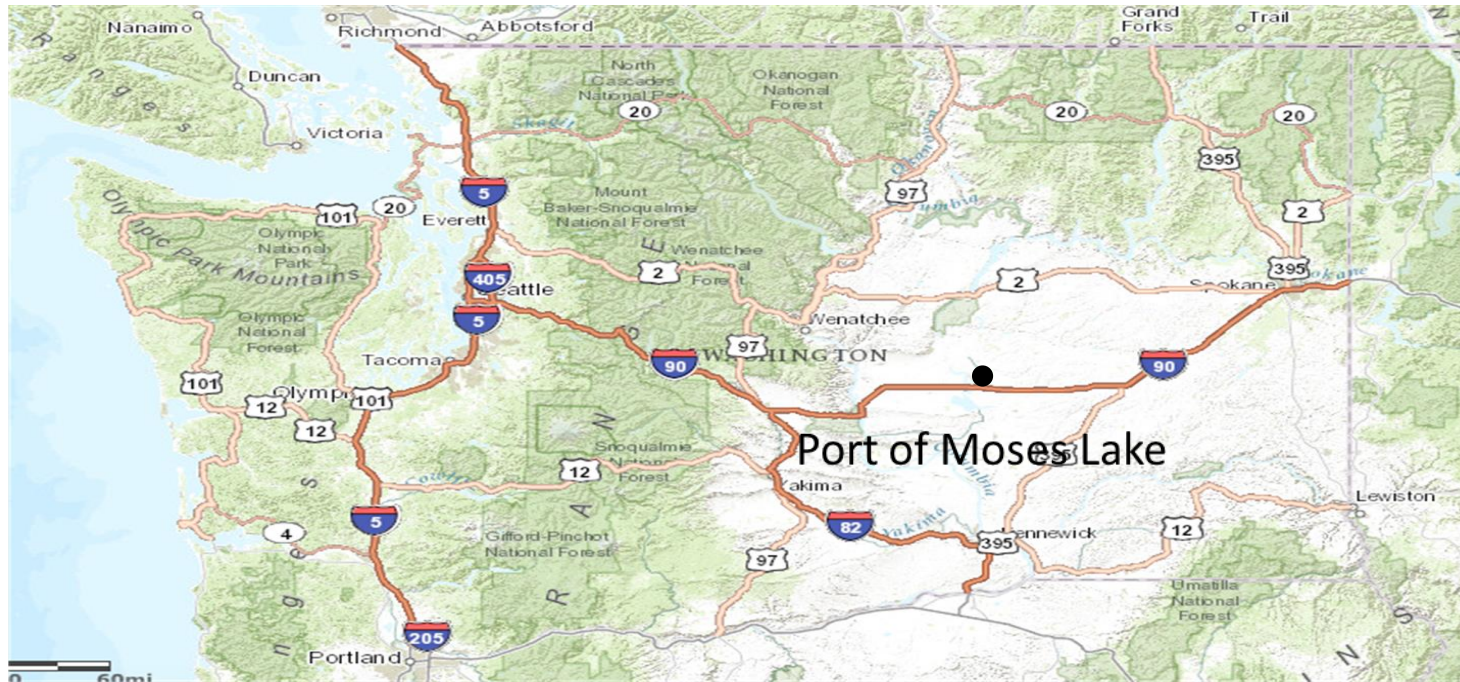


PORT OF MOSES LAKE



AIRFIELD ACTIVITY



Joint Base Lewis-McChord



Military Activity



US Marine Corp



US Navy



US Military Forces



US Airforce



US Airforce B-52's



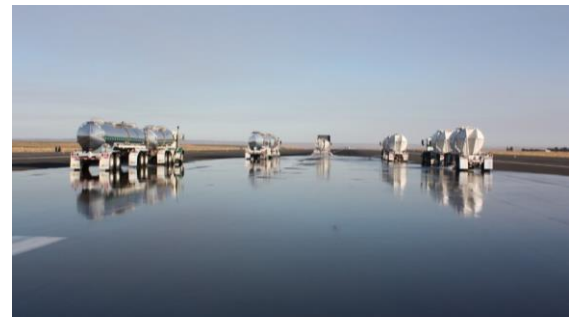


U.S. FOREST SERVICE

Caring for the land and serving people

United States Department of Agriculture





FLIGHT TEST



 **BOEING**





**MITSUBISHI AIRCRAFT
CORPORATION AMERICA, INC.**



AVIATION
TECHNICAL SERVICES

AeroTEC

TESTING | ENGINEERING | CERTIFICATION



GREENPOINT
Technologies



INDUSTRIAL PARK



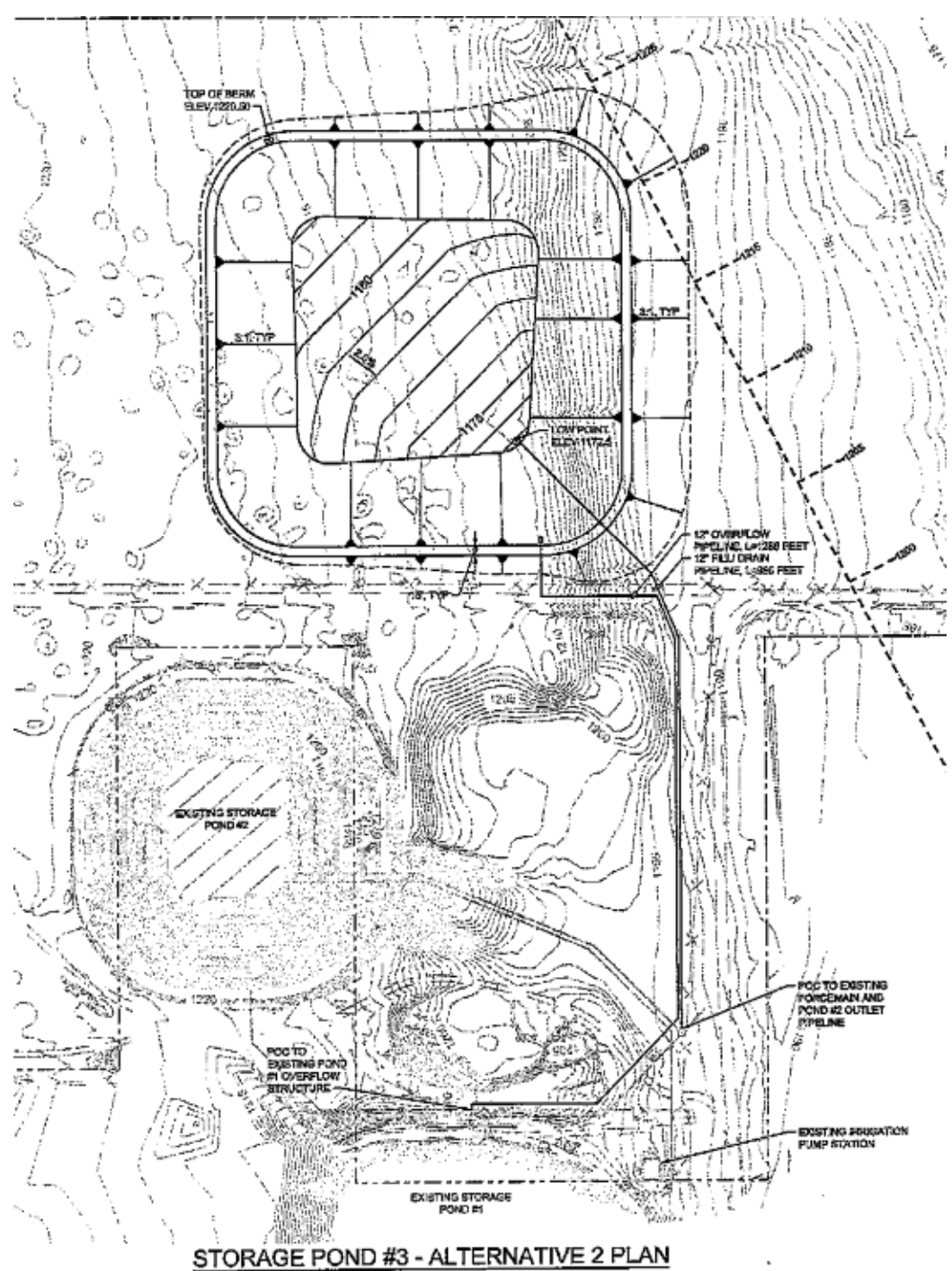




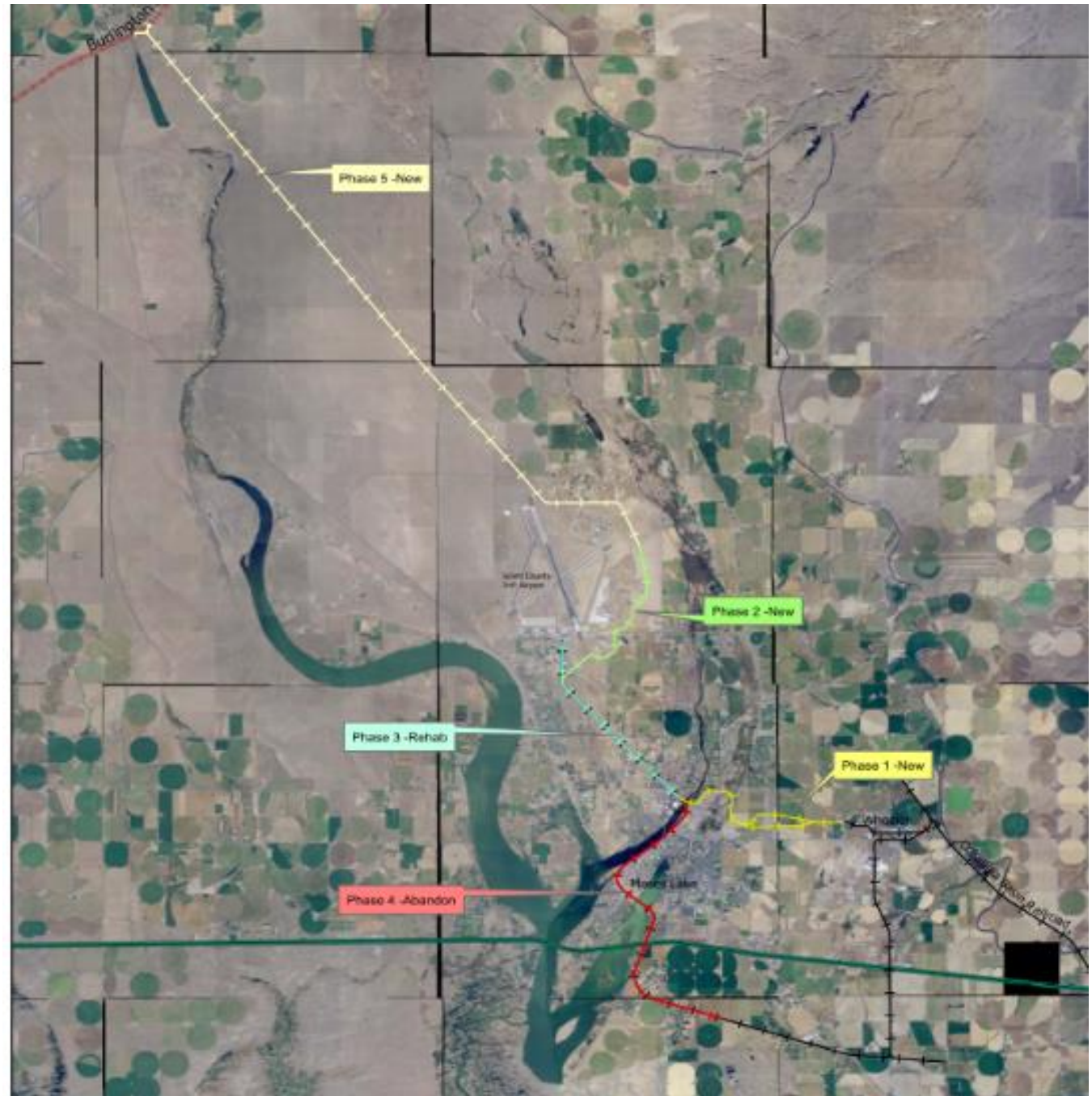
PROJECTS



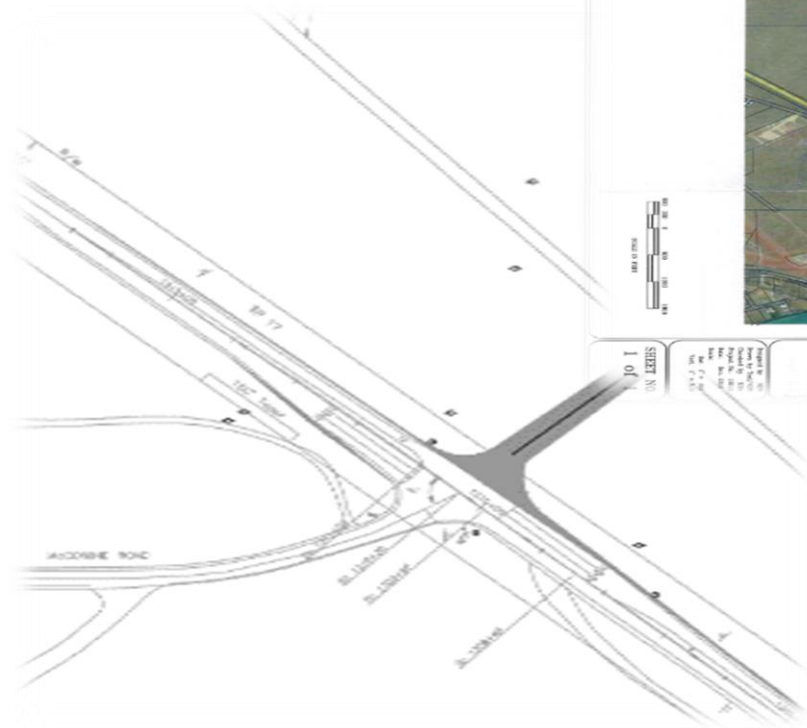
Wastewater Expansion Project



Northern Columbia Basin Rail Project



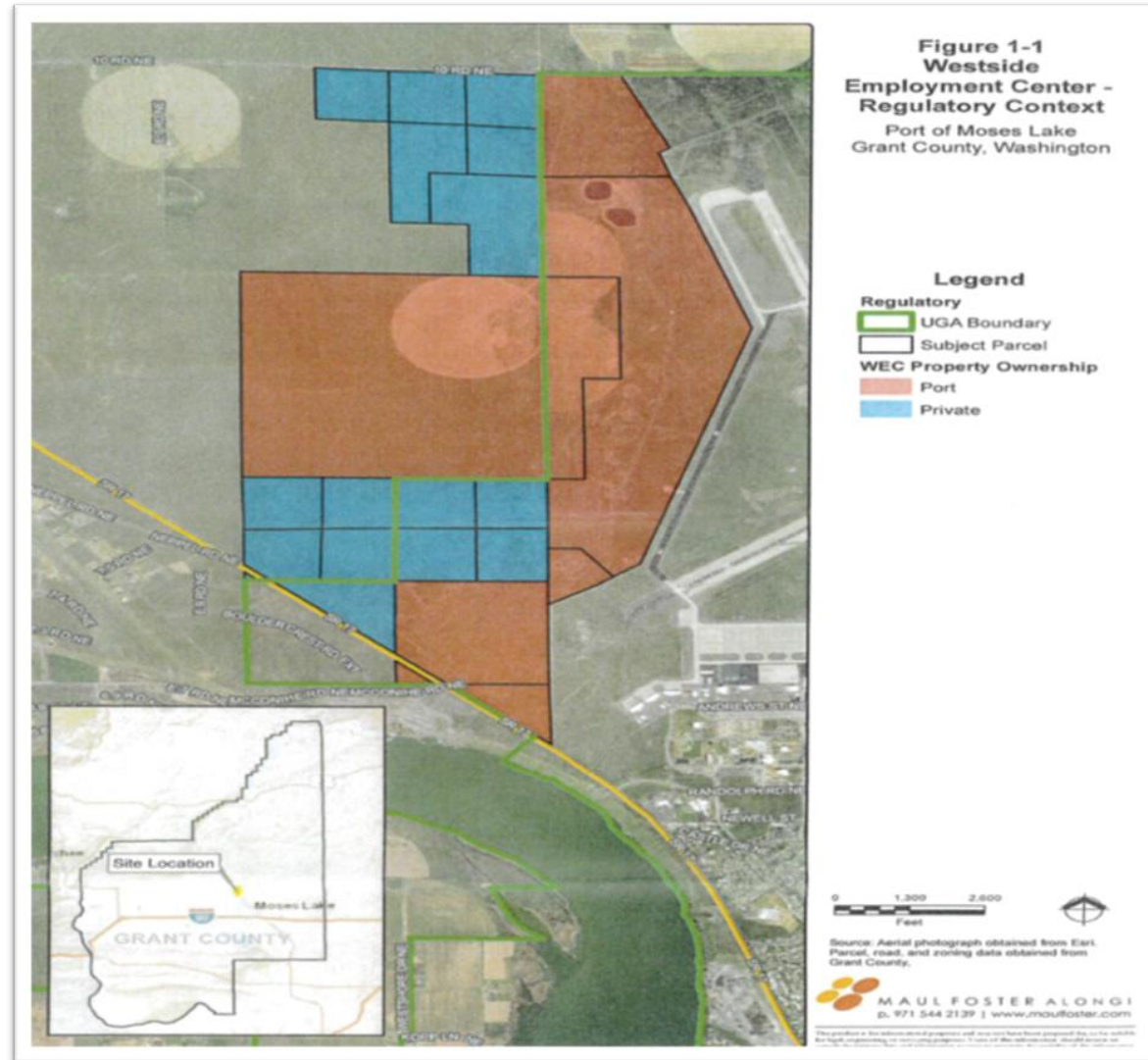
Intersection State Route 17



OPPORTUNITIES



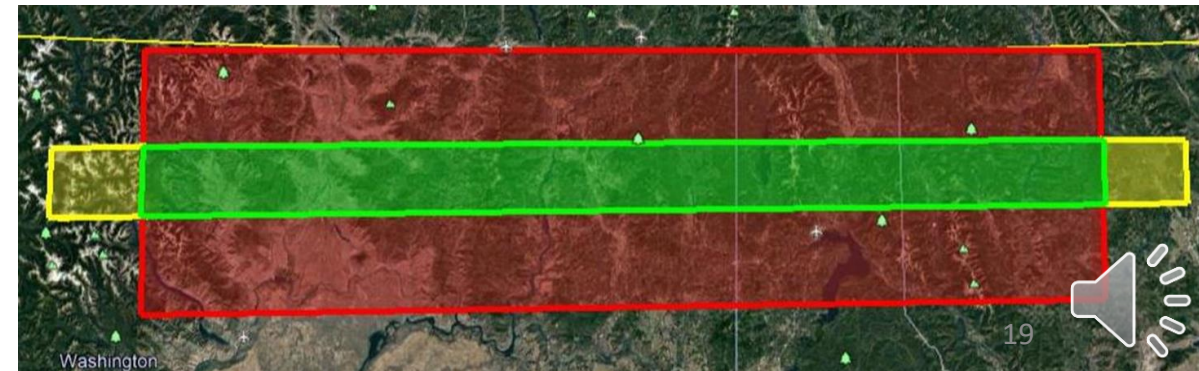
WESTSIDE DEVELOPMENT



SUPERSONIC COORRIDOR



- Bipartisan agreement that the US is losing its technological advantage
- The US government is committed to bringing this technology back into civilian use
- The industry needs a 300-mile Civilian Supersonic Corridor for flight test
 - Access to military supersonic corridor in CA is difficult
 - Open to all, usage coordinated through the FAA



CURRENT SUPERSONIC PROGRAMS





PORT OF MOSES LAKE

