

# SEATTLE-TACOMA INTERNATIONAL AIRPORT CAPITAL DEVELOPMENT UPDATE

Washington Public Ports Association  
November 21, 2019



**Eric ffitch**

State Government Relations Manager  
Port of Seattle



# Agenda

- Background
- Current construction
- Sustainable Airport Master Plan Near-Term Projects
- Next Steps



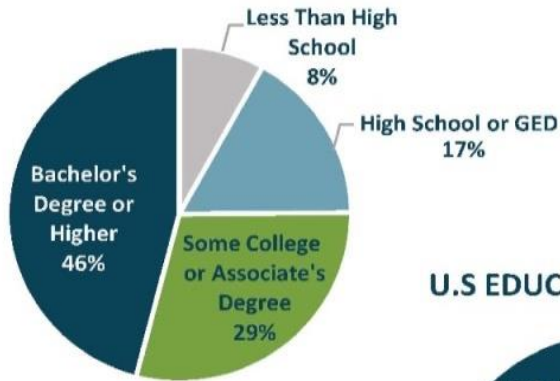
# Focus Issues- Serving Regional Demand

- Seattle is one of the fastest growing passenger markets in the country
- The market remains underserved, while demand continues to growth
- This demand generates a need to invest in infrastructure
- We feel strongly: the airport should not be the bottleneck of regional growth



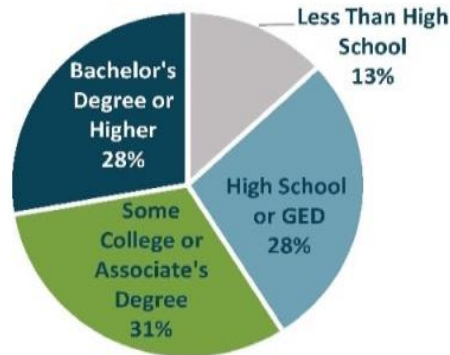
# Puget Sound Demographics

**KING COUNTY EDUCATION LEVELS, 2016**



Source: U.S. Census Bureau

**U.S. EDUCATION LEVELS, 2016**



**% CHANGE IN POPULATION**

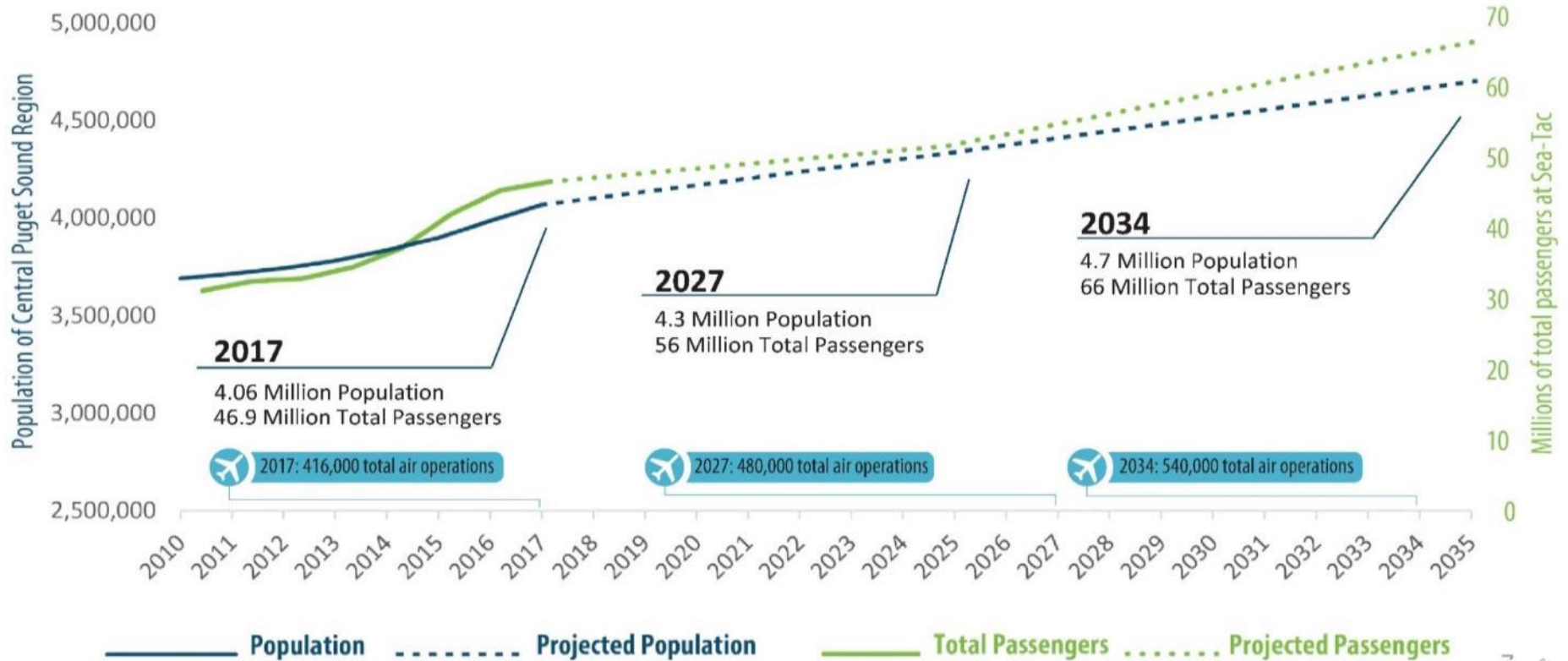


Source: U.S. Department of Commerce and Washington State Office of Financial Management

**PER CAPITA INCOME**



# Sea-Tac Airport Growth



# 2018 Airport sizes and activity

Airport	Acreage	2018 PAX (millions)	2018 OPS (thousands)
SFO	5,200	55.8	470
JFK	4,900	61.9	461
LAS	2,800	49.7	540
SEA	2,500	49.8	438

Source: FAA.gov, Wikipedia



# PSRC Regional Aviation Baseline Study

- Funded by FAA, launched in Fall 2018
- Goal is to provide update on current aviation planning activities and to forecast future demand
- Builds on master planning underway at regional airports
- Study will examine regional growth; how aviation supports economic development; and community concerns with airports
- This study will help to inform the work of the state's Commercial Aviation Coordinating Commission



*Paine Field, Snohomish County*



# Concurrent strategies to serve market demand

<b>Current Projects (46.9M PAX Today)</b>	<b>Near-Term Projects SAMP (56 MAP PAX)</b>	<b>Long-Term Vision SAMP (Demand Beyond 56 MAP)</b>
<ul style="list-style-type: none"><li>• North Satellite</li><li>• International Arrivals Facility</li><li>• Concourse D Annex</li><li>• Baggage Modernization</li><li>• Airport dining and retail development</li></ul>	<ul style="list-style-type: none"><li>• Meet market demand</li><li>• 19 additional gates &amp; second terminal</li><li>• Cargo facilities</li><li>• 30+ projects to improve safety, provide support facilities, improve efficiency, and access to the airport</li></ul>	<ul style="list-style-type: none"><li>• PSRC regional aviation baseline study</li><li>• State's Commercial Aviation Coordinating Commission</li><li>• Sea-Tac Airport airfield and airspace study</li><li>• Additional environmental review</li></ul>





# Major Projects Status

INTERNATIONAL ARRIVALS FACILITY



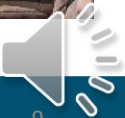
NORTH SATELLITE MODERNIZATION



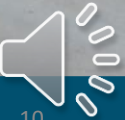
BAGGAGE OPTIMIZATION



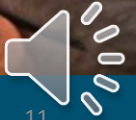
Central Terminal Upgrade



# International Arrivals Facility



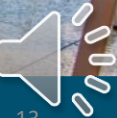
# North Satellite



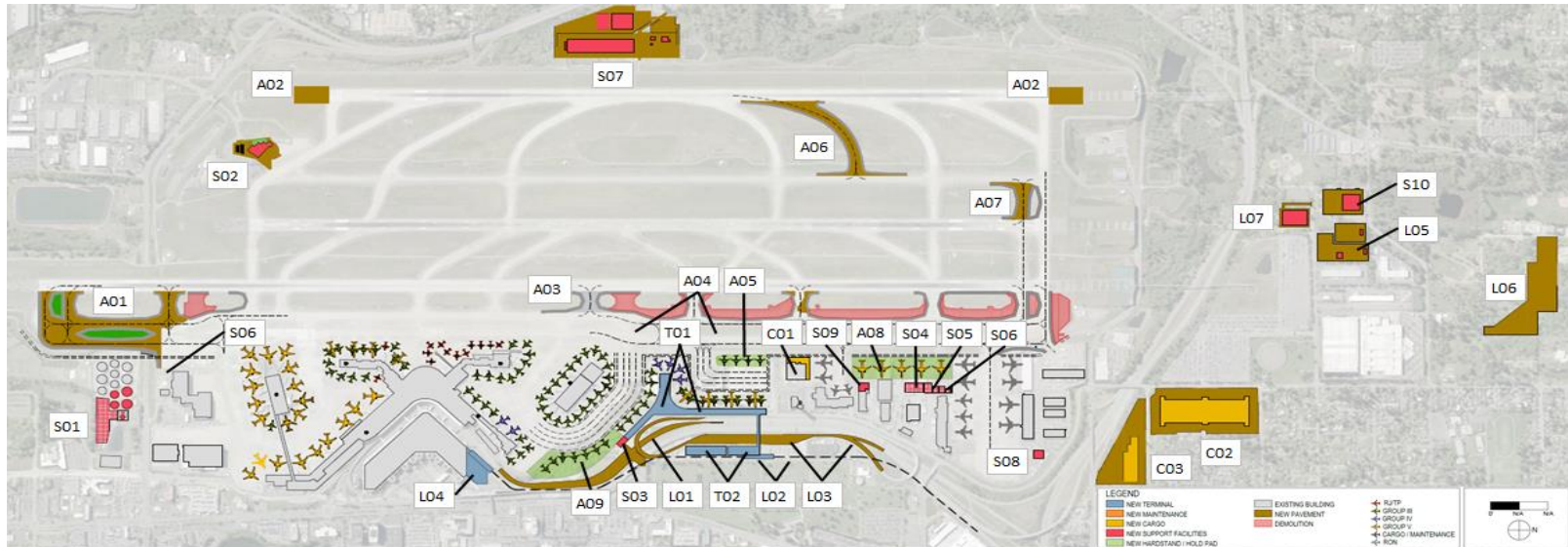
# Baggage Optimization



# Central Terminal Renovation



# Proposed SAMP Near-term projects



## Airside

- A01 Taxiway A/B Extension
- A02 Runway 16R-34L Blast Pads
- A03 Taxiway L Relocation (Pre-SAMP project) \*
- A04 Taxiway B 500' Separation & RIM Mitigation
- A05 North Hold Pad
- A06 Runway 34L Highspeed Exit
- A07 Taxiway D Extension
- A08 Hardstand (north)
- A09 Hardstand (central)

\* Project currently under construction

## Terminal

- T01 North Gates
  - T02 Second Terminal & Parking
- ### Cargo
- C01 Cargo 4 South Redevelopment
  - C02 Off-site Cargo Ph 1 (L-Shape)
  - C03 Off-site Cargo Ph 2 (L-Shape)

## Landside

- L01 NAE Relocation (southbound lanes)
- L02 Elevated Busway & Stations
- L03 Second Terminal Roads/Curbside
- L04 Main Terminal North GT Lot
- L05 North GT Holding Lot
- L06 Employee Parking Surface Lot
- L07 Employee Parking Structure

## Airport/Airline Support

- S01 Fuel Farm Expansion
- S02 Primary ARFF
- S03 Secondary ARFF
- S04 Fuel Rack Relocation
- S05 Triculator
- S06 Consolidated De-icing Tanks
- S07 Westside Maintenance Campus
- S08 Airline Support (north)
- S09 Airline Support (west)
- S10 Centralized Rec. & Dist. Center

# Sustainable Airport Master Plan (SAMP)

## Master Plan stages

- Inventory
- Forecasts
- Facility requirements
- Planning alternatives
- **Environmental review**
- Implementation plan
- Plan of Finance
- Airport Layout Plan approval



# Transportation Access Issues

- Puget Sound Gateway program
- SR 518 study
- Additional relevant work





# Thank you! Questions?

**Eric ffitch**

State Government Relations Manager, Port of Seattle

Email: [ffitch.e@portseattle.org](mailto:ffitch.e@portseattle.org)

