



PORT OF BELLINGHAM
Washington State

Climate-Focused Best Practices

Adrienne Hegedus
AdrienneH@PortOfBellingham.com

Components of Climate Work

Vision

Targets

Strategies

Adaptation

Mitigation

Networking

Airshed collaboration

Project collaboration

Prioritize vulnerable infrastructure

Communities

Budget processes

Continuous Improvement

Port of Bellingham's Vision

To be a regional leader in sustainable economic growth while achieving GHG emission reduction targets and operational resiliency.

Examples from other Ports

Port of Vancouver (BC): To be the world's most sustainable Port.

Port of Seattle: To be the greenest, most energy efficient Port in North America.

Port of Portland: To lower GHG emissions by 15% below 1990 levels by 2020.

Climate Plans 101

“Comprehensive policy tool outlining specific actions that an organization will undertake”

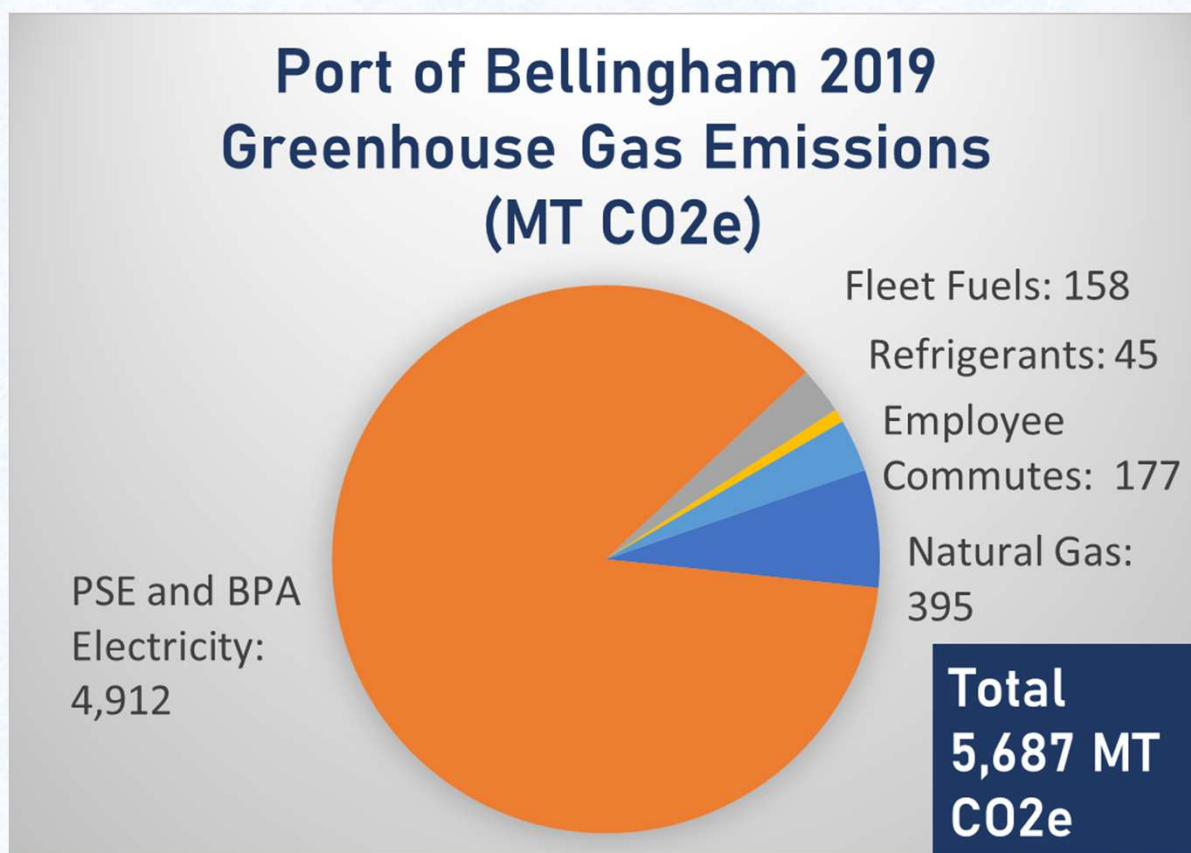
Iterative process including:

- Data
- Planning
- Implementing
- Monitoring
- Continuous improvement

Mitigation and Adaptation Goals, Strategies and Actions



Greenhouse Gas Benchmark



Focus 1: Mitigation (GHG) Targets

Reduce Port-controlled GHG emissions from 2019 levels by >90% by 2030 and be GHG Neutral by 2050

City of Bellingham and Whatcom County government targets: -85% from 2000 levels by 2030, 100% by 2050

Focus 2: Adaptation

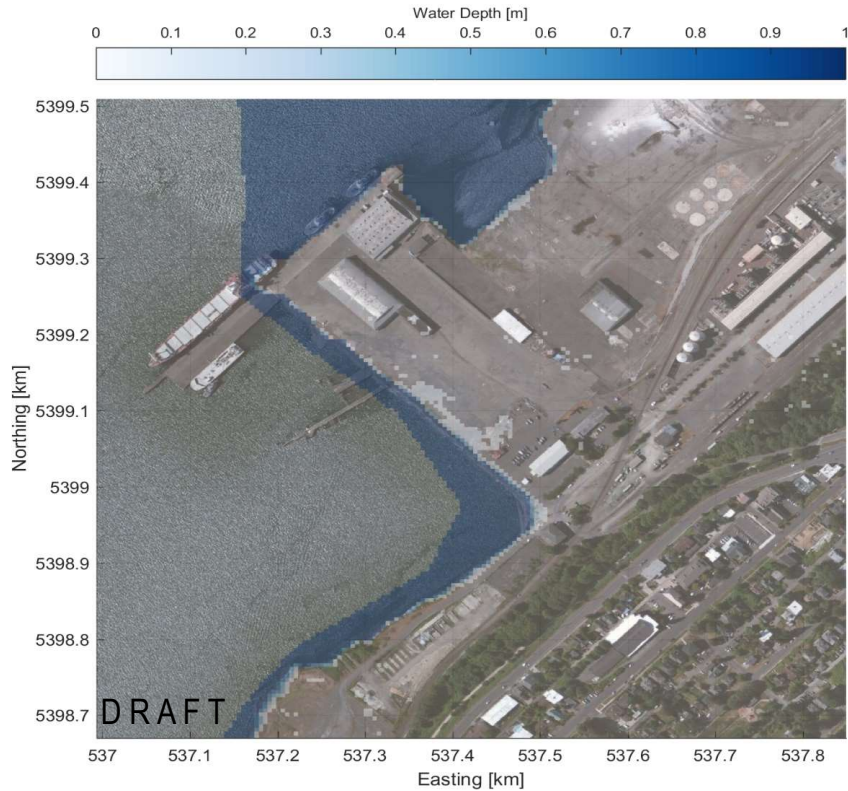
Part of larger resiliency work

List of data and deliverables:

- ✓ Sea Level Rise (SLR)– CoSMoS Web Viewer
- ✓ Port Wide SLR Vulnerability Assessment
- ✓ Site Specific Exposure, Sensitivity and Adaptive Capacity (ESA) Analyses –

Port of Bellingham – Cornwall Beach and Maintenance Facility

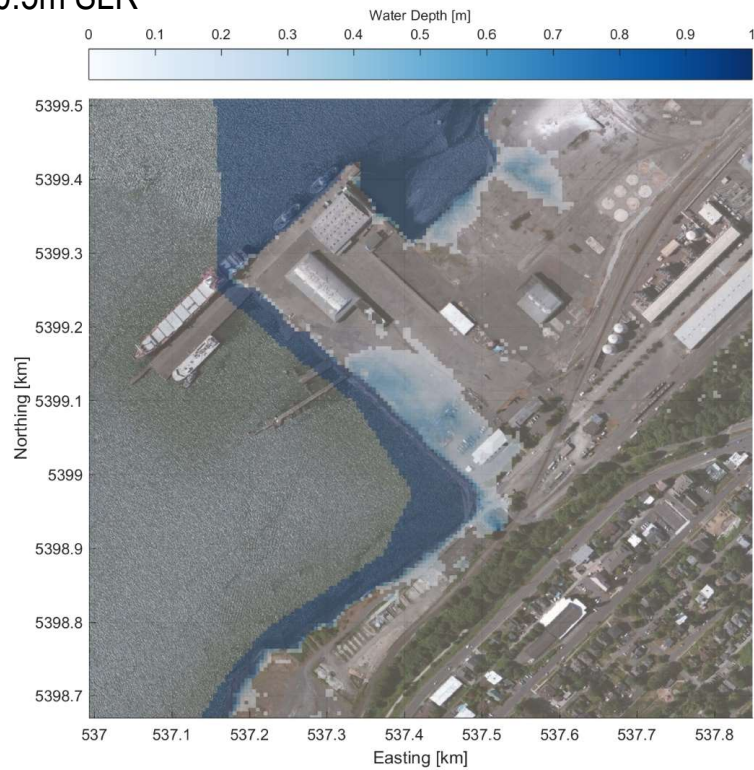
Current Sea Level



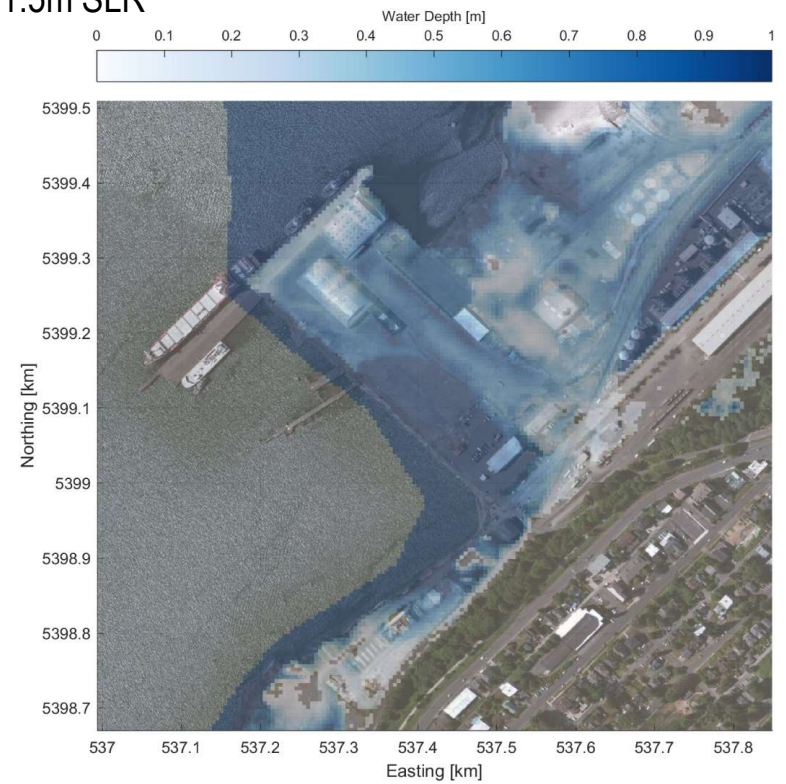
Cornwall Beach – Port Maintenance Facility, Oct 13, 2020

Port of Bellingham – Cornwall Beach and Maintenance Facility

0.5m SLR



1.5m SLR



DRAFT

Just starting?

Start with one project.

Get data on emissions and key vulnerabilities.

Find “your people” to work with or discuss ideas

Consult with stakeholders.



Please check out our website for more information, including work products and CoSMoS modeling links. <https://www.portofbellingham.com/1007/Key-Work-Products>

Adrienne Hegedus
AdrienneH@PortOfBellingham.com