

2022 WPPA Annual Meeting

PORTS AND ENVIRONMENTAL JUSTICE.

Abbi Russell, Senior Communications Specialist
Sarah Sieloff, Senior Planner

December 7, 2022



MAUL FOSTER ALONGI

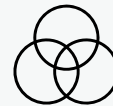
ELEMENTS OF ENVIRONMENTAL JUSTICE.



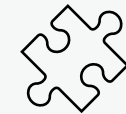
Inclusion



Fair treatment



Addressing disparities



Closing gaps

DEFINING EJ.

US EPA

Environmental justice (EJ) is the fair treatment and meaningful involvement of all people regardless of race, color, national origin, or income with respect to the development, implementation and enforcement of environmental laws, regulations and policies.

WASHINGTON STATE

Environmental justice means the fair treatment and meaningful involvement of all people regardless of race, color, national origin, or income with respect to the development, implementation, and enforcement of environmental laws, rules, and policies.

Environmental justice includes addressing disproportionate environmental health impacts in all laws, rules, and policies with environmental impacts by prioritizing vulnerable populations and overburdened communities, the equitable distribution of resources and benefits, and eliminating harm.

Key Definitions

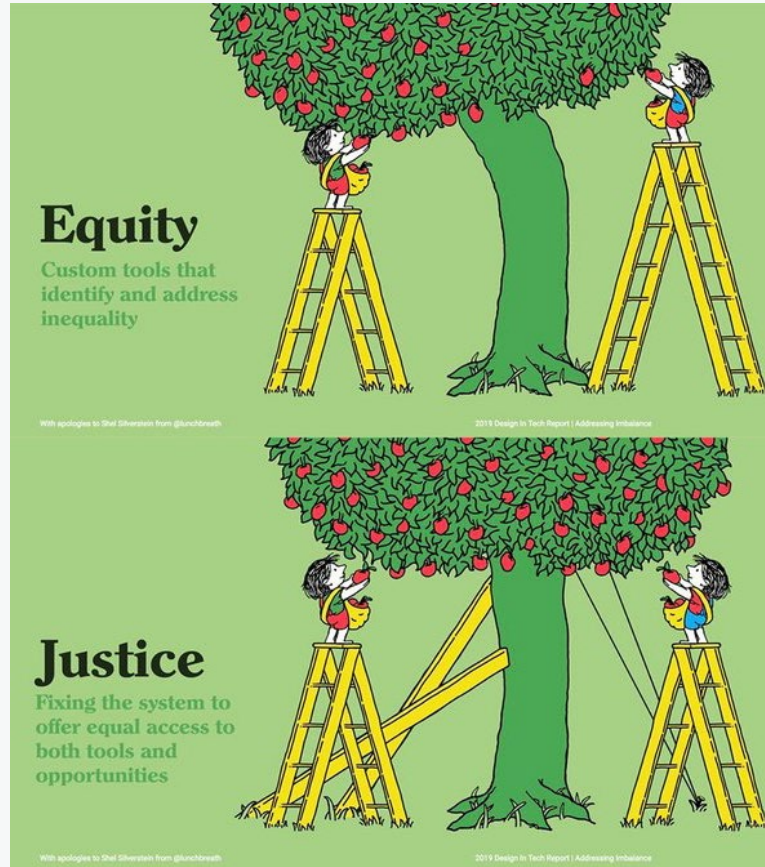
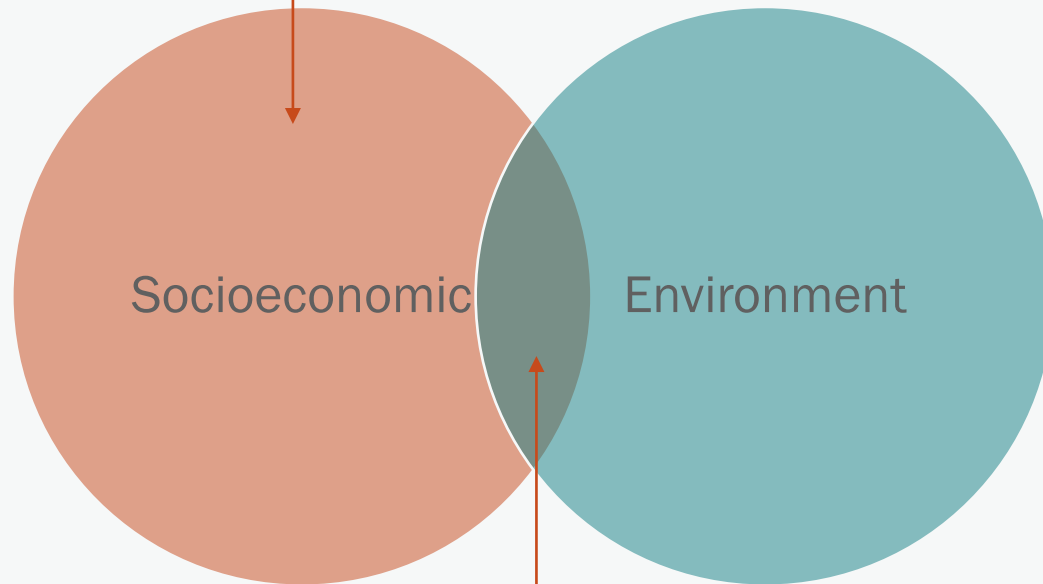


Image credit: Tony Ruth for Design in Tech Report

Diversity, Equity, and Inclusion (DEI)



Environmental Justice (EJ)

Environmental exposures

- Diesel emissions
- Ozone
- Particulate matter 2.5 (PM2.5)
- Toxic releases from facilities
- Traffic density

Environmental effects

- Lead risk and exposure
- Proximity to hazardous waste generators/facilities
- Proximity to Superfund sites
- Proximity to facilities with highly toxic substances
- Wastewater discharge

Sensitive populations

- Cardiovascular disease
- Low birth weight infants

Socioeconomic factors

- Poor educational attainment
- Housing burden
- Linguistic isolation
- Poverty
- Race (People of color)
- Transportation expense
- Unemployment

EJ at the State Level

Laws

- ❖ EJ Task Force (2019-2020, HB 1109) → [EJ Council](#)
- ❖ 2021 [Healthy Environment for All \(HEAL\) Act](#) (SB 5141)
- ❖ 2021 [Climate Commitment Act](#) (CCA, SB 5126)
- ❖ 2021 [Supporting Emergency Shelters and Housing through Local Planning and Development Regulations](#) (HB 1220)

Rules and Funding

- ❖ Funding guidelines (HEAL Act, CCA, Ecology grants)
- ❖ Model Toxics Control Act Rulemaking (2018-2023)

HEAL Act

COVERS 7 STATE AGENCIES

Puget Sound Partnership

Departments of:

- Health
- Agriculture
- Commerce
- Ecology
- Natural Resources
- Transportation

MANDATES EJ ASSESSMENTS

- ❖ Developing certain agency rules
- ❖ Adopting or developing new grant or loan programs
- ❖ Designing or awarding capital projects, grants, or loans of \$12 million or more
- ❖ Designing or awarding transportation projects, grants, or loans of \$15 million or more
- ❖ Developing agency request legislation

Nexus with Public Ports



Image credit: The Oregonian

- ❖ Community engagement
- ❖ Communications
- ❖ Facilities
- ❖ Cargo movement
- ❖ Tenant programs
- ❖ Current/future land use
- ❖ Funding/grants
- ❖ Permitting
- ❖ And more...

Tools



**Washington Tracking
Network**



EJScreen



EJ Index

EJ Baseline

Washington Environmental Health Disparities Map



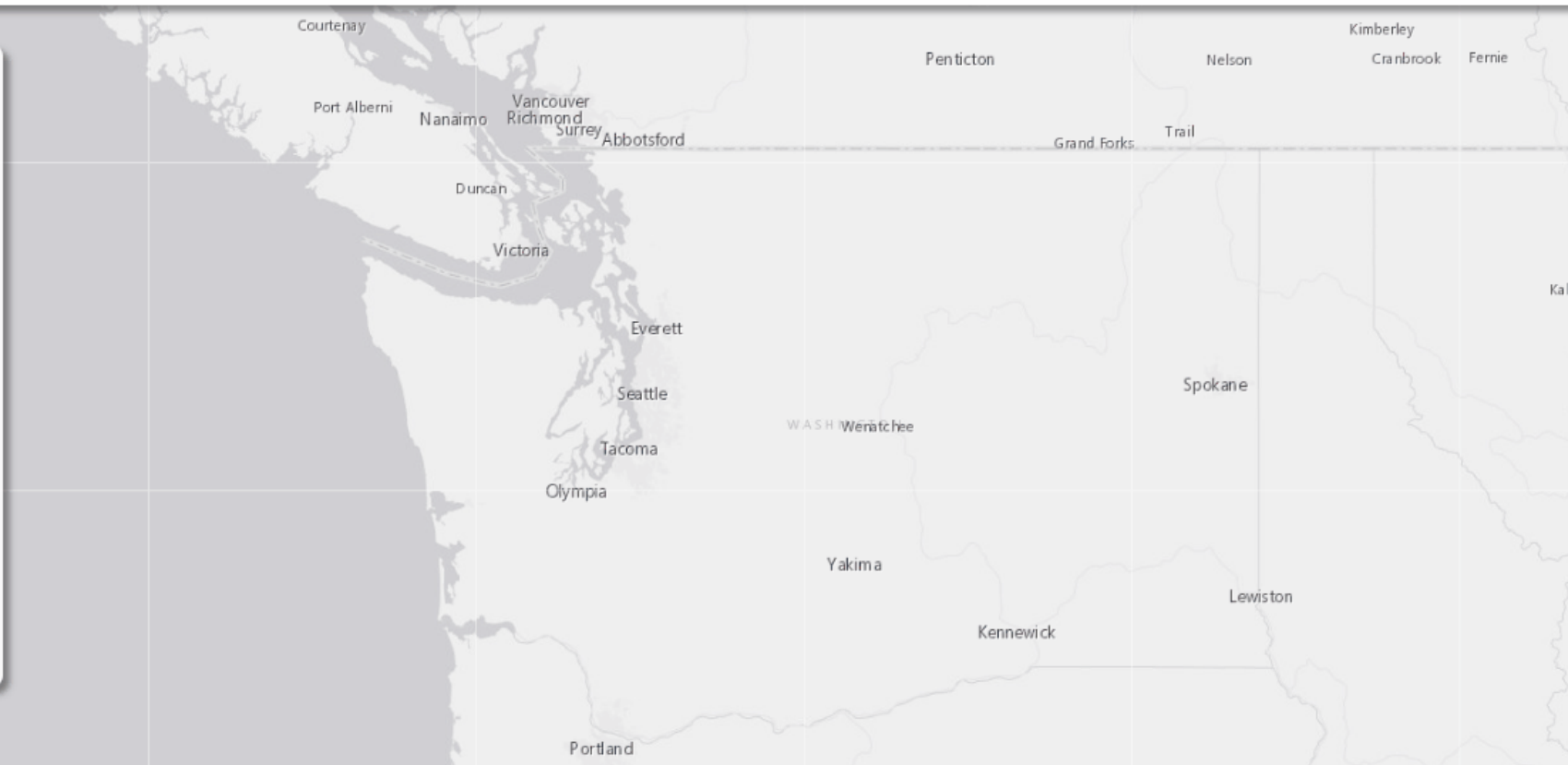
Washington Tracking Network
A Source for Environmental Public Health Data

Home > Data and Statistical Reports > Environmental Health > Washington Tracking Network (WTN)

- ☰
- 📄
- 📍
- ℹ️
- ?

- 📄 Environmental Health Disparities V 2.0
- 🚚 Diesel Pollution and Disproportionate Impact
- 📊 Social Vulnerability to COVID-19
- ⚠️ Social Vulnerability to Hazards
- 📄 Lead Exposure Risk
- 📄 Health Disparities
- 📄 Planning for Health

Copy Map URL To Clipboard



EPA EJSCREEN


EPA EJScreen EPA's Environmental Justice Screening and Mapping Tool (Version 2.1)

[EJScreen Website](#) | [Mobile](#) | [Glossary](#) | [Help](#)

Please note: Territory data (except Puerto Rico) is not available as comparable to the US. It is only comparable to the territory itself by using the 'Compare to State' functionality. Likewise, some of the indicators may not be available for territories.



Agency for Toxic Substances and Disease Registry EJ Index

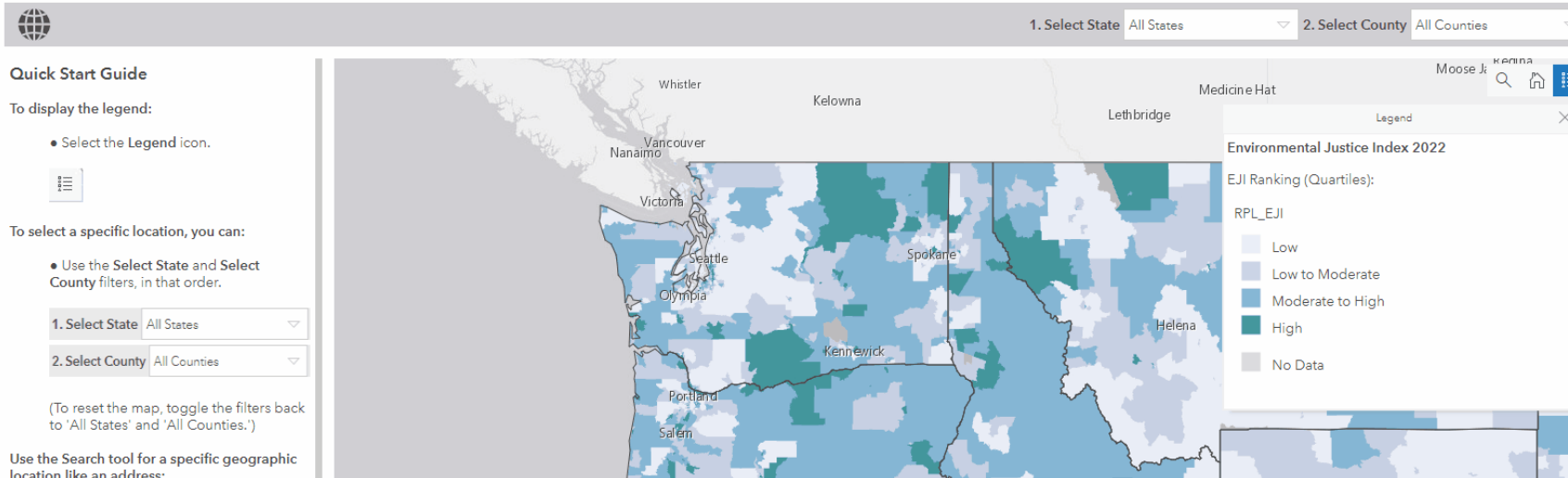
 Environmental Justice Index (EJI) Explorer

The Environmental Justice Index measures cumulative impacts of environment and vulnerability to build towards a cleaner, healthier, and more equitable future for all.

[Web Accessibility Tool](#) [Submit Feedback](#) [Download the Data](#)

Explore the EJI Map

The Environmental Justice Index (EJI) scores census tracts using a percentile ranking which represents the proportion of tracts that experience cumulative impacts of environmental burden and injustice equal to or lower than a tract of interest. For example, an EJI ranking of 0.85 signifies that 85% of tracts in the nation likely experience less severe cumulative impacts on health and well-being than the tract of interest, and that 15% of tracts in the nation likely experience more severe cumulative impacts from environmental burden. [Click here for more information on EJI background and methods.](#)



The screenshot displays the user interface of the Environmental Justice Index Explorer. At the top, there are two dropdown menus for filtering: "1. Select State" set to "All States" and "2. Select County" set to "All Counties". Below these is a search bar with the text "Moose J. Kenina" and icons for search, home, and a menu. The main area features a map of the Pacific Northwest, with various cities labeled: Whistler, Kelowna, Lethbridge, Medicine Hat, Vancouver, Nanaimo, Victoria, Seattle, Olympia, Spokane, Kennewick, Helena, Portland, and Salem. A legend box titled "Environmental Justice Index 2022" is open, showing "EJI Ranking (Quartiles)" with a color scale: Light Blue for "Low", Medium Blue for "Low to Moderate", Dark Blue for "Moderate to High", and Green for "High". A "No Data" category is shown in grey. On the left side, a "Quick Start Guide" provides instructions: "To display the legend: Select the Legend icon." (with a legend icon shown); "To select a specific location, you can: Use the Select State and Select County filters, in that order." (with the state and county dropdowns shown); and "Use the Search tool for a specific geographic location like an address:" (with a search bar shown).

Case Studies

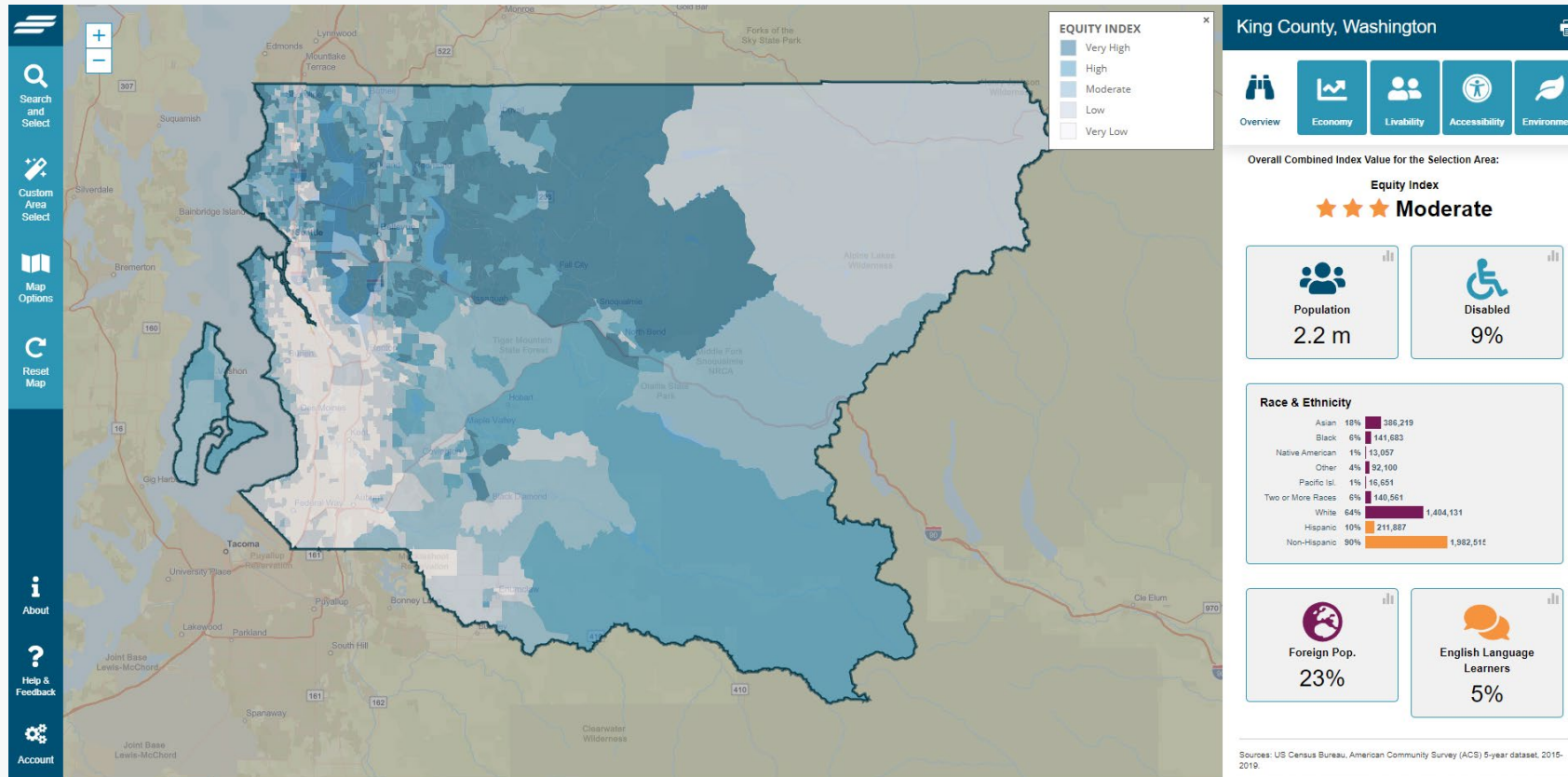


Image credit: Port of Vancouver USA



Image credit: Port of Tacoma

Port of Seattle Equity Index



Where does it all lead?



NEXT STEPS.



Develop an EJ baseline



Inform community outreach



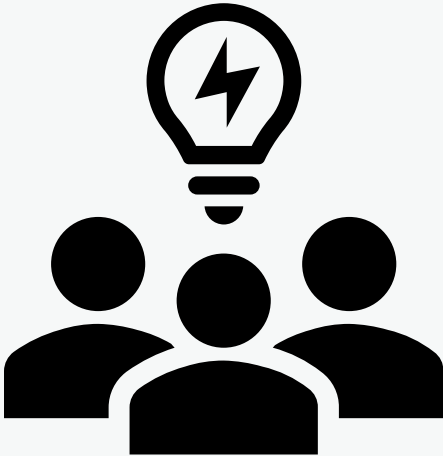
Funding nexus



First-mover advantage



Shaping the conversation



Building relationships



Sharpening thinking and communications



Abbi Russell
arussell@maulfoster.com

Sarah Sieloff
ssieloff@maulfoster.com

