



PORT OF  
**BENTON**

**WPPA Communications  
Committee – Stakeholder  
Communications**



Van Giesen



Swift

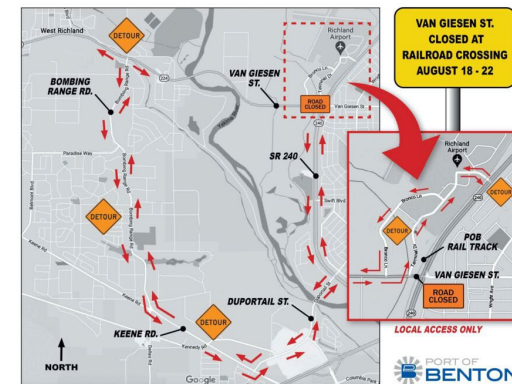
**2022 Van Giesen / SR 224  
and Swift Blvd./Cemetery Rd.  
Railroad Crossing  
Replacement Projects**



# PRE-PROJECT COMMUNICATIONS

## Van Giesen Project

- Press release – 8/1/2022
- Press release – 8/17/2022
- Hand-delivered press release and detour map to all RAP area tenants and businesses – 8/4/2022
- Hand-delivered press release, detour map and 24-hour construction notice to nearby residents – 8/18/2022





# PRE-PROJECT COMMUNICATIONS

## Press Releases



2022 - RICHLAND RAIL CONSTRUCTION PROJECTS



FOR IMMEDIATE RELEASE – August 1, 2022

Project Contact  
Roger Wright, Project Manager  
[info@portofbenton.com](mailto:info@portofbenton.com), 509-375-3060

### Construction to Begin on the Van Giesen/State Route 224 Railroad Crossing – Detour in Place Throughout Full Road Closure

**RICHLAND, WASH** – Port of Benton plans to begin construction on the Van Giesen/State Route 224 railroad crossing on Thursday, August 18, 2022 at Noon (12 p.m.) This project will fully replace the railroad crossing, rail, ties, concrete crossing panels and the road on both sides of the panels will be repaved.

The railroad crossing replacement project will require **full closure** of Van Giesen Street for the duration of the project, with the crossing reopening for traffic on Monday, August 22, 2022 at 6 a.m. Detour signage will be in place and electronic highway notification will be displayed one week prior to the project start.

The Port has contracted with Railworks Track Systems for replacement of the Van Giesen/State Route 224 crossing project. Plans are in place to also replace the Swift Blvd./Cemetery crossing in September 2022. Both rail crossing projects are 100% port-funded.

For additional information, please visit [portofbenton.com/projects](http://portofbenton.com/projects), or call 509-375-3060.

*\*Please note that although the Port of Benton owns the rail and trackage commonly known as the Southern Connection, for all legal intents and purposes the Port of Benton is not considered a railroad, and as such, will not be taking over any operations of the Port trackage. We appreciate your patience and open communication throughout this process.*

###



2022 - RICHLAND RAIL CONSTRUCTION PROJECTS



FOR IMMEDIATE RELEASE – August 17, 2022

Project Contact  
Roger Wright, Project Manager  
[info@portofbenton.com](mailto:info@portofbenton.com), 509-375-3060

### Construction To Begin on the Van Giesen/State Route 224 Railroad Crossing – Detour in Place Throughout Full Road Closure

**RICHLAND, WASH** – Port of Benton will begin construction on the Van Giesen/State Route 224 railroad crossing on Thursday, August 18, 2022 at Noon (12 p.m.) This project will fully replace the railroad crossing, rail, ties, concrete crossing panels and the road on both sides of the crossing will be repaved.

The railroad crossing replacement project will require **full closure** of Van Giesen Street for the duration of the project, with the crossing reopening for traffic no later than Monday, August 22, 2022 at 6 a.m. The roadway will be opened earlier if construction is completed ahead of schedule. Detour signage will be in place and electronic highway notification will be displayed directing traffic around the detour, generally Van Giesen Street, to Bombing Range Road and Keene Road, and then via Duportail Street back to State Route 240.

The Port has contracted with Railworks Track Systems for replacement of the Van Giesen/State Route 224 crossing project. Plans are in place to also replace the Swift Blvd./Cemetery crossing in September 2022. Both rail crossing projects are 100% port-funded.

For additional information, please visit [portofbenton.com/projects](http://portofbenton.com/projects), or call 509-375-3060.

*\*Please note that although the Port of Benton owns the rail and trackage commonly known as the Southern Connection, for all legal intents and purposes the Port of Benton is not considered a railroad, and as such, will not be taking over any operations of the Port trackage. We appreciate your patience and open communication throughout this process.*

###







# PRE-PROJECT COMMUNICATIONS

## Swift Project

- Press release – 9/19/2022
- Press release – 9/27/2022



2022 - RICHLAND RAIL CONSTRUCTION PROJECTS



FOR IMMEDIATE RELEASE – September 19, 2022

Project Contact  
Roger Wright, Project Manager  
[info@portofbenton.com](mailto:info@portofbenton.com), 509-375-3060  
Pat Hollick, General Manager  
Sunset Gardens, 509-943-0803

### Railroad Crossing Construction to Begin on Cemetery Access/Swift Boulevard

**RICHLAND, Wash.** – Port of Benton plans to begin construction on the Cemetery Access/Swift Boulevard railroad crossing on Thursday, September 29, at noon. The crossing will reopen for traffic on Monday, October 3, at 6 a.m.

**The railroad crossing replacement project will require the full closure of Cemetery Road, the access road to Einan's at Sunset Funeral Home, and the Cemetery at Sunset Gardens throughout the project.**

The construction project is 100% Port of Benton funded and includes fully replacing the railroad crossing, rail, ties, concrete crossing panels and repaving the road on both sides of the panels.

For additional information, please visit [portofbenton.com/projects](http://portofbenton.com/projects) or call 509-375-3060.

\*Please note that although Port of Benton owns the rail and trackage commonly known as the Southern Connection, for all legal intents and purposes the Port of Benton is not considered a railroad, and as such, will not be taking over any operations of the port trackage.

###



2022 - RICHLAND RAIL CONSTRUCTION PROJECTS



FOR IMMEDIATE RELEASE – September 27, 2022

Project Contact  
Roger Wright, Project Manager  
[info@portofbenton.com](mailto:info@portofbenton.com), 509-375-3060  
Pat Hollick, General Manager  
Sunset Gardens, 509-943-0803

### Construction To Begin on the Cemetery Access/Swift Boulevard Railroad Crossing

**RICHLAND, Wash.** – Port of Benton plans to begin construction on the Cemetery Access/Swift Boulevard railroad crossing this Thursday, September 29, at noon. The crossing will reopen for traffic on Monday, October 3, at 6 a.m.

**The railroad crossing replacement project will require the full closure of Cemetery Road, the access road to Einan's at Sunset Funeral Home, and Cemetery at Sunset Gardens throughout the project.**

The construction project is 100% Port of Benton funded and includes fully replacing the railroad crossing, rail, ties, concrete crossing panels and repaving the road on both sides of the panels.

For additional information, please visit [portofbenton.com/projects](http://portofbenton.com/projects) or call 509-375-3060.

\*Please note that although Port of Benton owns the rail and trackage commonly known as the Southern Connection, for all legal intents and purposes the Port of Benton is not considered a railroad, and as such, will not be taking over any operations of the port trackage.

###




# PRE-PROJECT COMMUNICATIONS

## Social Media

**Port of Benton**  
Published by Summers Miya · August 4 at 11:06 AM · 🌐

Road closure notice with detour in place! The #portofbenton will begin construction of the Van Giesen/SR 224 railroad crossing on Thursday, August 18th. Read all about it here:  
<https://portofbenton.com/construction-to-begin-on-the-.../>



See insights and ads Boost post

👍 9      22 Comments 113 Shares



On the move with  
#portofbenton project  
info!



Road closure notice with detour in plac...

Post type: Post

August 4, 2022 at 11:06 AM

18,384  
People reached

2,693  
Post Engagements

304  
Reactions

165  
Comments

113  
Shares




# PRE-PROJECT COMMUNICATIONS

## Social Media

**Port of Benton**  
Published by Summers Miya · 2d · 🌐

Construction on the Van Giesen/State Route 224 railroad crossing will begin tomorrow, August 18th at 12 p.m. Detours will be in place throughout this project, as full road closure of this area is necessary to complete the construction required. The crossing will reopen no later than 6 a.m., Monday, August 22nd. [Read the full press release here.](#)

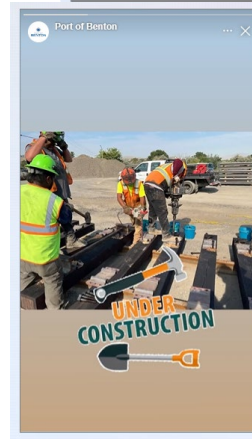
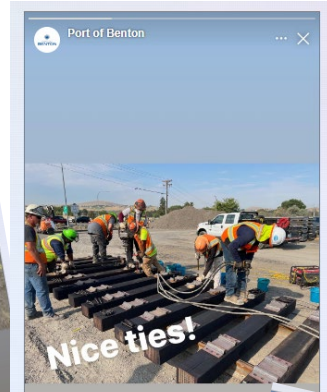


PORTOFBENTON.COM

**Construction to Begin on the Van Giesen/State Route 224 Railroad Crossing - Detour in Place Throughout Full Road...**

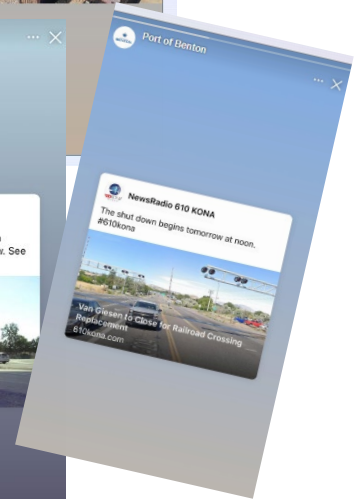
See insights and ads Boost post

👍 10 3 Shares



**City of Richland Government**

Railroad construction project closes Van Giesen for four days beginning tomorrow. See [www.portofbenton.com/projects](http://www.portofbenton.com/projects)



	Road closure notice with detour in plac...	Boost post	August 4, 2022 at 11:06 AM	18,384 People reached	2,693 Post Engagements	304 Reactions	165 Comments	113 Shares
--	--	------------	----------------------------	--------------------------	---------------------------	------------------	-----------------	---------------





# PRE-PROJECT COMMUNICATIONS

## Social Media



City of Richland Government

September 20 at 8:55 AM · 🌐

Good News! The Port of Benton will begin construction on the Cemetery Access/Swift Boulevard railroad crossing on Thursday, September 29, at noon. The crossing will reopen for traffic on Monday, October 3, at 6 a.m.

The railroad crossing replacement project will require the full closure of Cemetery Road, the access road to Einan's at Sunset Funeral Home, and the Cemetery at Sunset Gardens throughout the project.

The construction project is 100% Port of Benton funded and includes fully replacing the railroad crossing, rail, ties, concrete crossing panels, and repaving the road on both sides of the panels.

For additional information, please visit [portofbenton.com/projects](https://portofbenton.com/projects), or call 509-375-3060.



Dawn N Chris

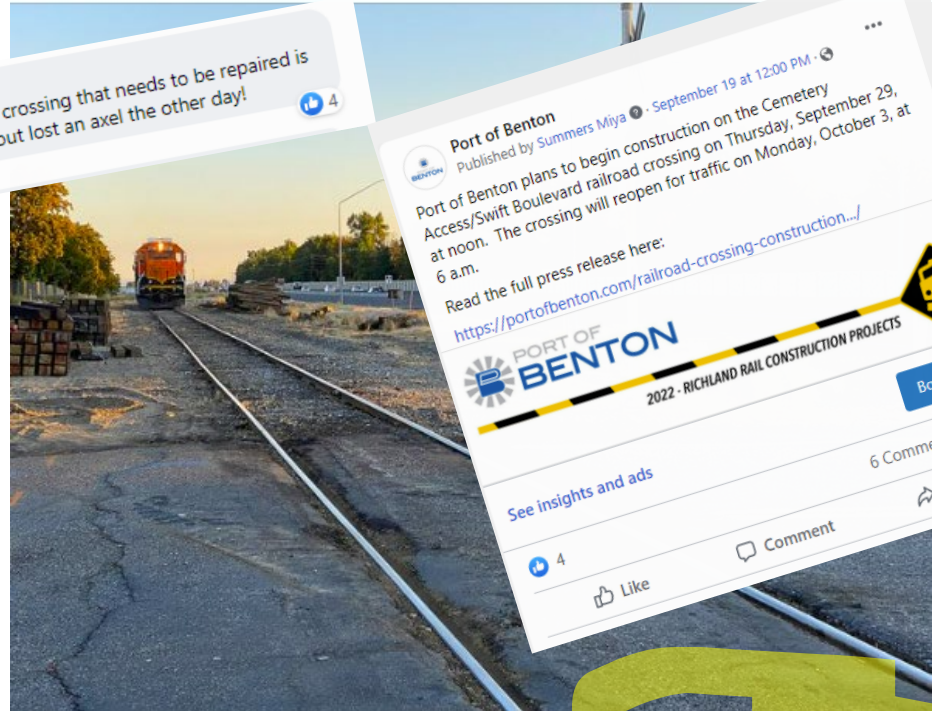
Van Giesen is wonderful now! The next railway crossing that needs to be repaired is HWY 240 on the way out to Horn Rapids. I about lost an axel the other day!

Like Reply 2w

Great job POB!!

Janet Schoel

So glad they are finally doing this.



Port of Benton

Published by Summers Miya · September 19 at 12:00 PM · 🌐

Port of Benton plans to begin construction on the Cemetery Access/Swift Boulevard railroad crossing on Thursday, September 29, at noon. The crossing will reopen for traffic on Monday, October 3, at 6 a.m.

Read the full press release here:  
<https://portofbenton.com/railroad-crossing-construction.../>



2022 - RICHLAND RAIL CONSTRUCTION PROJECTS

Boost post

See insights and ads

6 Comments 1 Share

4



Like



Comment



Share

87

32 Comments 31 Shares



Like



Comment

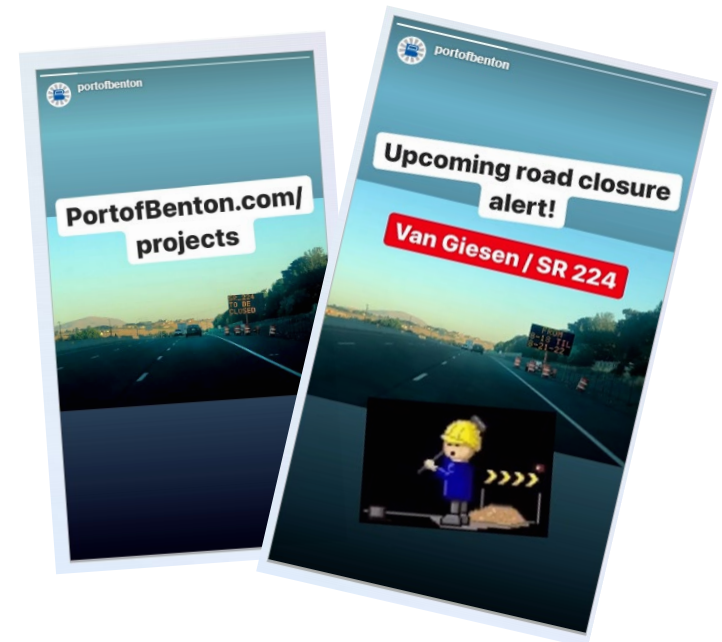


Share



# PRE-PROJECT COMMUNICATIONS

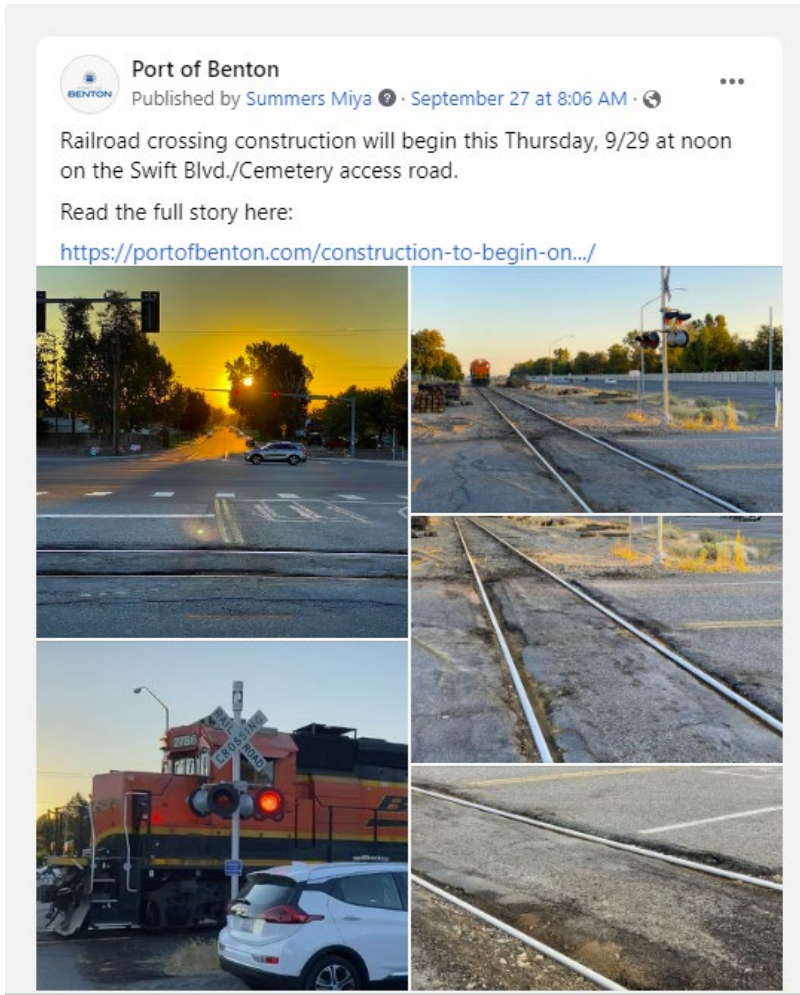
WSDOT Communication





# PRE-PROJECT COMMUNICATIONS

## Social Media







# PROJECT COMMUNICATIONS

**Port of Benton**  
Facebook Page

Lifetime: Mar 31, 2019 – Aug 19, 2022

**Port of Benton**  
Published by Summers Miya · 3h · 🌐

Crews have been working all night on the Van Giesen rail crossing replacement. To ensure a timely reopening, construction will continue for 24 hours a day until completion. Detours remain in place. #portofbenton #construction #project

See insights and ads Boost post

👍❤️ 28 4 Comments 6 Shares

**portofbenton**  
Instagram account

Lifetime: Mar 31, 2019 – Aug 19, 2022

Feed Grid

Instagram

portofbenton

View insights Boost post

👍👤 Liked by smiya20 and 2 others

	Crews have been working all night on t...	Boost post	August 19, 2022 at 6:07 AM	33 People reached	–	5 Likes	1 Comments	–
	Crews have been working all night on t...	Boost post	August 19, 2022 at 6:07 AM	11,266 People reached	1,931 Post Engagements	348 Reactions	63 Comments	28 Shares





# PROJECT COMMUNICATIONS

**City of Richland Government**  
1h · 🌐

Here is a project update. Thank you **Port of Benton**

**Port of Benton**  
3h · 🌐

Crews have been working all night on the Van Giesen rail crossing replacement. To ensure a timely reopening, construction will continue for 24 hours a day until completion. Detours remain in place. #portofbenton #construction #project

55  
Like Comment Share

10 Comments 3 Shares  
Most relevant

Write a comment...  
Press Enter to post.

**Karin Filsinger Spanner**  
THANK YOU to this hard working crew! We are grateful!  
Like Reply 7m

**Mike Maffeo**  
Much needed improvements. Thanks to the employees putting in the hard work.  
Like Reply 44m

**Patty Hall**  
That's great news! The Sunset Memorial Gardens track is next. Every time I go over to visit Mom, and I am taking my Dad. Dad (98) comments that we are waking up the people when we are driving over the tracks.  
Like Reply 1h Edited

**Mary Ellwein**  
Thank you for your hard work. In this heat it's not easy.  
Like Reply 44m

**Chris Whalen**  
Congrats to the crew making this happen. It is amazing how fast construction projects can ACTUALLY get accomplished when you put a little pressure on the trades... Now if we could get other construction projects completed on time and on budget... thin... See more  
Like Reply 45m

**Aaron Lindholm**  
So glad to see it being worked on and...  
Like Reply 17m

Port of Benton

Project progress!  
#portprojects



# PROJECT COMMUNICATIONS







# PROJECT COMMUNICATIONS

**Port of Benton**  
Published by Summers Miya · August 20 at 6:40 AM · 🌐

Work continued through the night and progress is "on track" for reopening the Van Giesen crossing by 6 a.m., Monday.  
#portprojects #construction #portofbenton #crossingproject



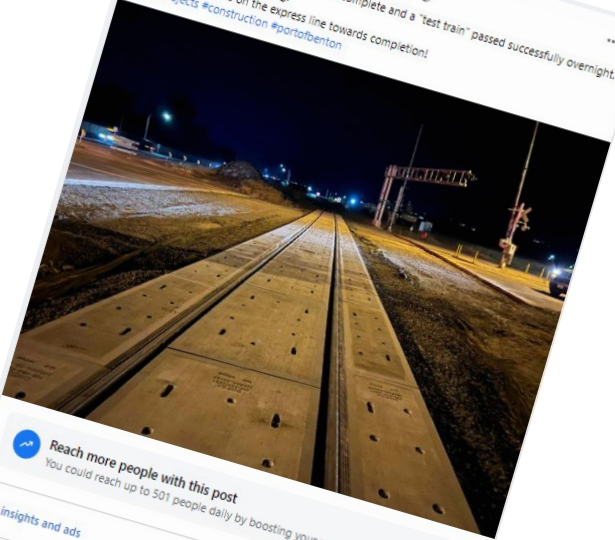
See insights and ads [Boost post](#)

👍❤️ 31 6 Shares

👍 Like    💬 Comment    ➦ Share

**Port of Benton**  
Published by Summers Miya · August 21 at 6:50 AM · 🌐

The new Van Giesen crossing panels are complete and a "test train" passed successfully overnight. Paving will begin this morning. The project remains on the express line towards completion!  
#portprojects #construction #portofbenton



**Reach more people with this post**  
You could reach up to 501 people daily by boosting your post for \$14. ×

[See insights and ads](#)

👍❤️ You and 65 others

[Boost post](#)

9 Comments 32 Shares

  Work continued through the night and... [Boost post](#) August 20, 2022 at 6:40 AM 1,033 People reached    110 Post Engagements    41 Reactions    3 Comments    6 Shares


  The new Van Giesen crossing panels ar... [Boost post](#) August 21, 2022 at 6:50 AM 8,644 People reached    1,053 Post Engagements    399 Reactions    63 Comments    32 Shares



# PROJECT COMMUNICATIONS

**Port of Benton**  
Published by Summers Miya · August 21 at 1:31 PM · 🌐

The light at the end of this project tunnel is getting brighter and brighter! Painting to begin soon.  
#portprojects #construction #portofbenton #crossingproject



**Reach more people with this post**  
You could reach up to 501 people daily by boosting your post for \$14.

See insights and ads [Boost post](#)


👍❤️ 42 7 Shares

👍 Like    💬 Comment    ➦ Share

Most relevant ▾

**Port of Benton**  
Published by Summers Miya · August 22 at 5:24 AM · 🌐

Crews have made it to the end of the line and the Van Giesen crossing project is complete! We are so proud of the #portofbenton team, as well as the contractors involved. Thank you to the entire #community for the support throughout this entire job. ... [See more](#)



**Reach more people with this post**  
You could reach up to 501 people daily by boosting your post for \$14.

See insights and ads [Boost post](#)

👍❤️ 80 12 Comments 45 Shares

👍 Like    💬 Comment    ➦ Share

 The light at the end of this project tun... [Boost post](#) August 21, 2022 at 1:31 PM 2,803  
People reached

434  
Post Engagements    116  
Reactions    26  
Comments    7  
Shares

 Crews have made it to the end of the li... [Boost post](#) August 22, 2022 at 5:24 AM 13,733  
People reached

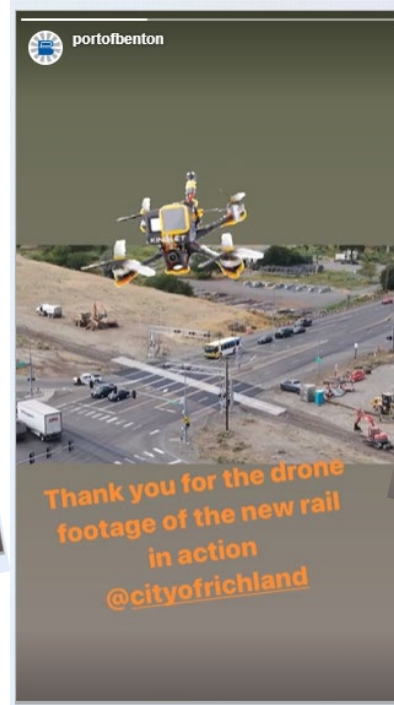
2,003  
Post Engagements    593  
Reactions    88  
Comments    45  
Shares





# PROJECT COMMUNICATIONS

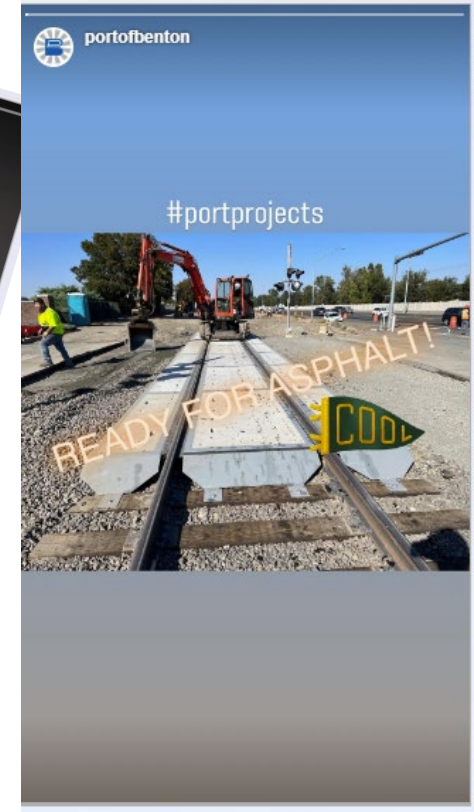
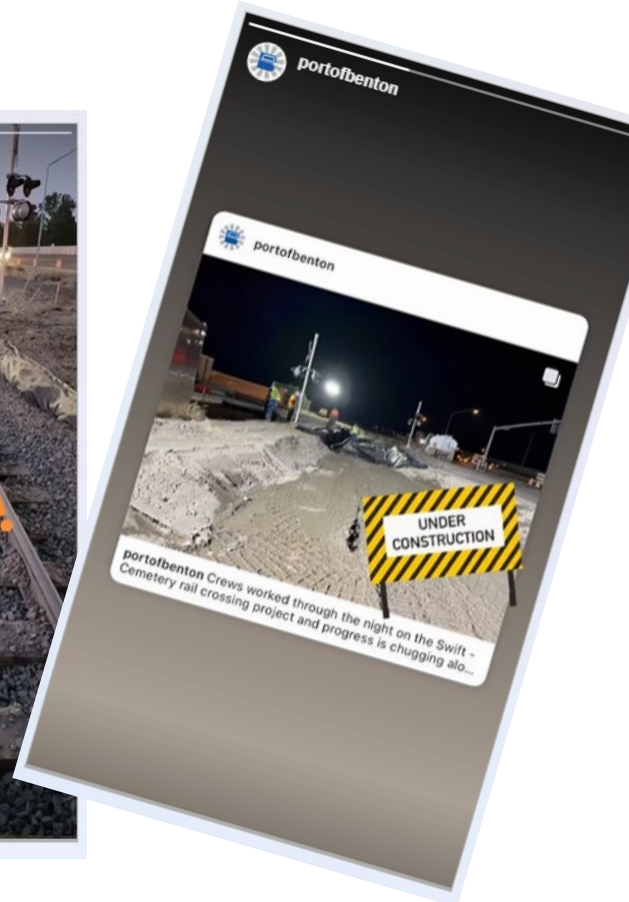
## Stories





# PROJECT COMMUNICATIONS

## Stories






# PROJECT COMMUNICATIONS

**Port of Benton**  
Published by Summers Miya · 5d · 🌐

The Swift Blvd./Cemetery access railroad crossing is officially underway and the cemetery has been closed until Monday.  
#portofbenton #portprojects



See insights and ads [Boost post](#)





👍🙄 9 2 Comments

👍 Like    💬 Comment    ➦ Share

**THURSDAY**

**Port of Benton**  
Published by Summers Miya · 5d · 🌐

Crews worked through the night on the Swift - Cemetery rail crossing project and progress is chugging along as planned.  
#portprojects #construction #portofbenton #crossingproject



See insights and ads [Boost post](#)

👍 You and 17 others 1 Comment 5 Shares

**FRIDAY**






# PROJECT COMMUNICATIONS

**Port of Benton**  
Published by Summers Miya · 4d · 🌐

Our Friday night plans include running the tamper and setting out the new panels.  
#TGIF #ProjectProgressReport #PortProjects #construction #crossingproject #SwiftCemetery



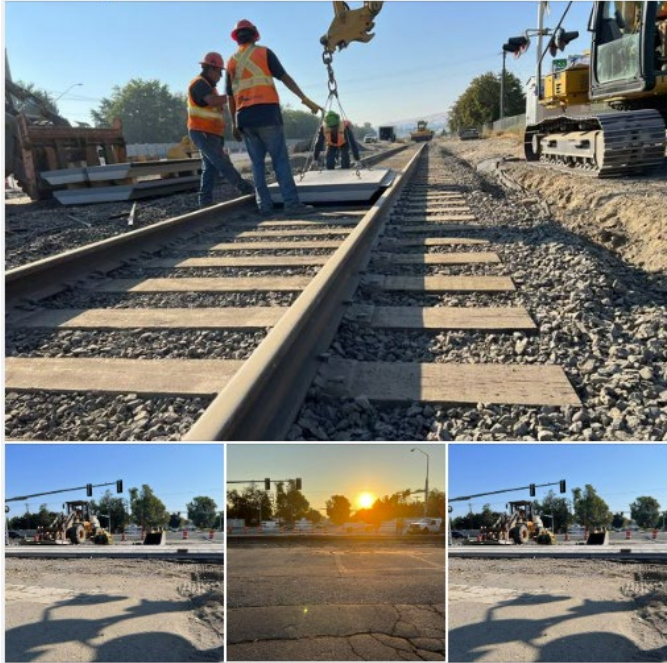
See insights and ads [Boost post](#)

👍❤️ 14 1 Comment 1 Share

**FRIDAY NIGHT**

**Port of Benton**  
Published by Summers Miya · 4d · 🌐

Progress on the Swift/Cemetery crossing project is on track!  
#PortProjects #construction #crossingproject #SaturdaysarefortheTracks



See insights and ads [Boost post](#)

👍 12 3 Shares

**SATURDAY**





# PROJECT COMMUNICATIONS



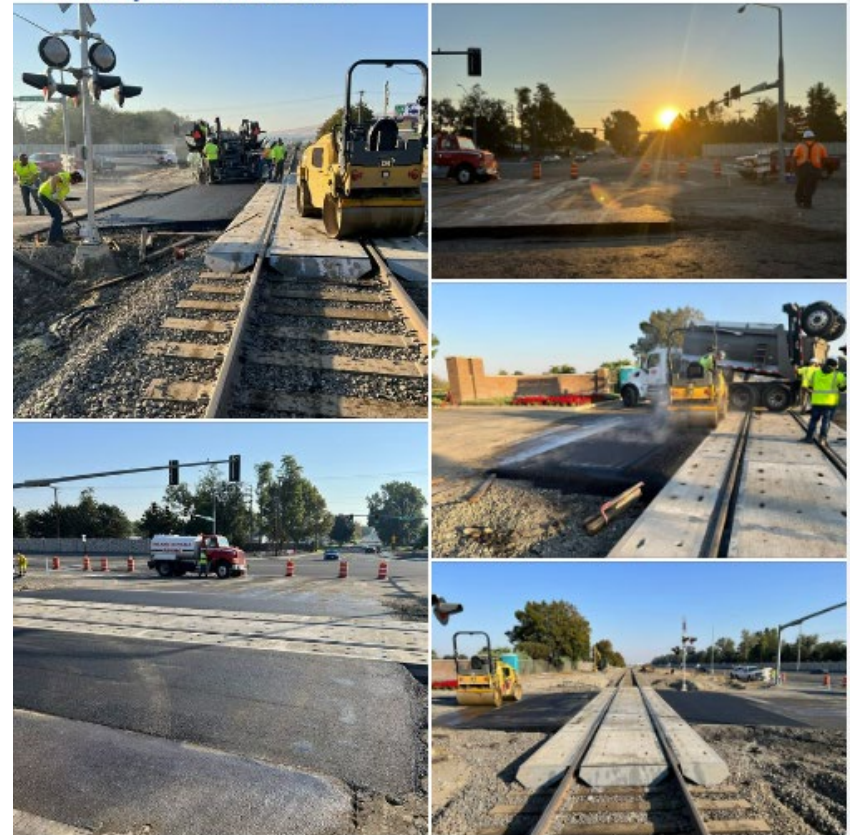
**SUNDAY**



Port of Benton

Published by Summers Miya · 3d · 🌐

Crews haven't been derailed on the Swift/Cemetery #crossingproject and painting prep is underway!  
#PortProjects #Construction



See insights and ads

Boost post

👍 20

1 Share



# PROJECT COMMUNICATIONS

## Press Release – 8/22/2022



2022 - RICHLAND RAIL CONSTRUCTION PROJECTS



FOR IMMEDIATE RELEASE – August 22, 2022

Project Contact  
Roger Wright, Project Manager  
[info@portofbenton.com](mailto:info@portofbenton.com), 509-375-3060

### Van Giesen/State Route 224 Railroad Crossing Construction Project Complete

RICHLAND, Wash. – Port of Benton has completed reconstructing the Van Giesen/State Route 224 railroad crossing. The project began at noon on Thursday, August 18, and crews worked continuously until construction was completed. Crews reopened the intersection early this morning.

The project encompassed replacing the entire rail crossing, adding concrete panels, new rail ties and repaving.

The Port owns the rail and trackage and recently evicted longtime rail tenant and short-line operator, Tri-City Railroad, due to them being deficient on rail maintenance for years.

To ensure safety and continued rail service to the community, and despite near-constant litigation with Tri-City Railroad, the Port stepped in to address rail maintenance issues and moved forward with the crossing replacement projects in 2021.

The Port plans to replace the Swift Boulevard/Cemetery Road rail crossing in September and the State Route 240 crossing in 2023. The 2022 projects are 100% port funded, and the Port anticipates funding the 2023 work using a mix of Port and grant funding. The Port is currently seeking applications for a new short-line rail operator.

For additional information, visit [portofbenton.com/projects](http://portofbenton.com/projects) or call 509-375-3060.

*\*Please note that although Port of Benton owns the rail and trackage commonly known as the Southern Connection, for all legal intents and purposes the Port of Benton is not considered a railroad, and as such, will not be taking over any operations of the port trackage.*

###



Port of Benton  
Port of Benton drives economic growth, trade and tourism by providing quality infrastructure and multimodal transportation for businesses and the community.

View Online

Download a Copy

FOR IMMEDIATE RELEASE – August 22, 2022

Project Contact  
Roger Wright, RGW Enterprises, P.E.  
[info@portofbenton.com](mailto:info@portofbenton.com), 509-375-3060

### Van Giesen/State Route 224 Railroad Crossing Construction Project Complete

RICHLAND, Wash. - Port of Benton has completed reconstructing the Van Giesen/State Route 224 railroad crossing. The project began at noon on Thursday, August 18, and crews worked continuously until construction was completed. Crews reopened the intersection early this morning.

The project encompassed replacing the entire rail crossing, adding concrete panels, new rail ties and repaving.

The Port owns the rail and trackage and recently evicted longtime rail tenant and short-line operator, Tri-City Railroad, due to them being deficient on rail maintenance for years.

To ensure safety and continued rail service to the community, and despite near-constant litigation with Tri-City Railroad, the Port stepped in to address rail maintenance issues and moved forward with the crossing replacement projects in 2021.

The Port plans to replace the Swift Boulevard/Cemetery Road rail crossing in September and the State Route 240 crossing in 2023. The 2022 projects are 100% Port funded, and the Port anticipates funding the 2023 work using a mix of Port and grant funding. The Port is currently seeking applications for a new short-line rail operator.

For additional information, please visit [portofbenton.com/projects](http://portofbenton.com/projects), or call 509-375-3060.

*\*Please note that although Port of Benton owns the rail and trackage commonly known as the Southern Connection, for all legal intents and purposes, the Port of Benton is not considered a railroad, and as such, will not be taking over any operations of the Port trackage.*

###



# PROJECT COMMUNICATIONS

## Feedback

Roger,

No complaints received. Comments I heard were all positive, especially after they drove over the new crossing.....smoooooooooth.

Congrats on a successful completion. All your teams pre-planning efforts worked very well.

**ROSCOE SLADE III, P.E.**

Public Works Director

(509) 967-5434 | [roscoe@westrichland.org](mailto:roscoe@westrichland.org)

3100 Belmont Blvd. West Richland, WA 99353



First Name	LINDA
Last Name	ESTES
Email	<a href="mailto:lestes0330@gmail.com">lestes0330@gmail.com</a>
Subject	Route 224 Railroad Crossing
Message	Thank you, thank you, thank you for fixing the railroad crossing on Rt. 224. That has been a mess for so long! I am curious as to where the money came from to fix it. Was it part of the infrastructure bill that was passed last year?  Thanks again, Linda Estes





# PROJECT COMMUNICATIONS


## Feedback

Write a comment...     

Press Enter to post.

 **Timothy J Lord**  
Thank You Thank You and Thank You. Can't wait for 240 update!! 😊😊  
Like Reply [Send Message](#) 1d


 **Edwin A. Keeney**  
That's awesome! **Congratulations!**   
Like Reply [Send Message](#) 2d

 **Claire Tess e A**  
Beautiful. Can't wait for 240!!   
Like Reply [Send Message](#) 3d



 **Lori Jordan Miller**






Learn more about the Van Giesen rail crossing project, as well as future crossing projects, here:








PORTOFBENTON.COM  
**Van Giesen/State Route 224 Railroad Crossing Construction Project Complete - Port of Benton**



  23 1 Comment

 Like  Comment  Share

Most relevant ▾

Write a comment...     

Press Enter to post.

 **Bud Backer Sr.**  
Thank you for a job well done!   
Like Reply [Send Message](#) 2d



# PROJECT COMMUNICATIONS

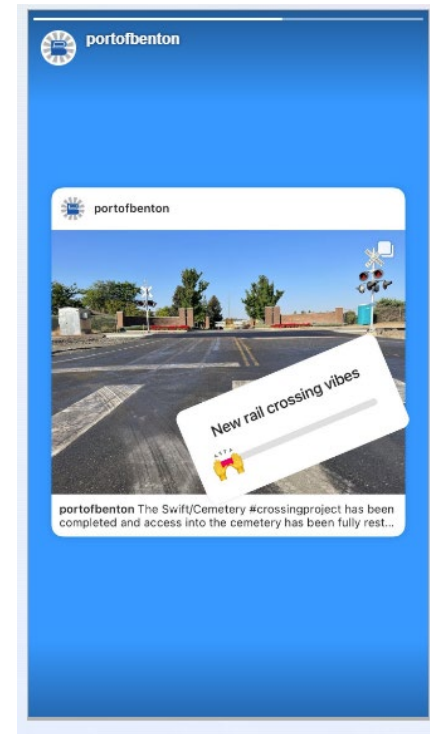
**Port of Benton**  
Published by Summers Miya · 2d · 🌐

The Swift/Cemetery [#crossingproject](#) has been completed and access into the cemetery has been fully restored.  
A big thanks to the community for the support throughout construction, as well as the cooperation received from Sunset Gardens.  
[#PortProjects](#) [#Construction](#)



Great work Port of Benton 👍

Two down - one to go! 👍





# PROJECT COMMUNICATIONS

## Construction completed at Richland railroad crossing

Karlee Van de Venter Digital Content Producer Oct 4, 2022 Updated 18 hrs ago

**Port of Benton**  
Published by Summers Miya · 23h · 🌐

Construction has been completed on the Swift Blvd./Cemetery access railroad crossing.  
Read the full press release here:  
<https://portofbenton.com/construction-to-begin-on-/>

See insights and ads

12 Like Comment Share

Boost post

1 Comment

**Construction Completed on Swift Blvd**

NBC Right Now

### MORE INFORMATION



Expect to see construction on Richland Railroad crossing

**RICHLAND, Wash.** — The Port of Benton has announced that road crews have finished reconstruction work at the Swift Boulevard/Cemetery Road access railroad crossing in the late afternoon of October 2.

Work started September 29, including rail crossing replacement, the addition of concrete panels, new rail ties and repaving.



**NBC Right Now** · 23h · 🌐

After a few days of continuous work, reconstruction efforts are done at the Swift/Cemetery railroad crossing.

**Construction completed at Richland railroad crossing**  
RICHLAND, Wash. — The Port of Benton has announced that road crews have finished reconstruct...

45 Like Comment Share

3 Comments 2 Shares

Write a comment...

**Allen Findley**  
Great job 🙌 the Van Geisen crossing is so much better as well  
Like Reply 12h

**Pamela Edmonds**  
Great job guys !!  
Like Reply 23h



Search

HOME PROGRAMS NEWS WEATHER CONTENTS FEATURES COMMUNITY

Adobe Creative Cloud for teams  
Upgrade your plan to grow your business. [Learn more](#)

## Construction completed at Richland railroad crossing

by Karlee Van de Venter Digital Content Producer | @ | October 4, 2022 4:30 pm



**RICHLAND, Wash.** — The Port of Benton has announced that road crews have finished reconstruction work at the Swift Boulevard/Cemetery Road access railroad crossing in the late afternoon of October 2.

Work started September 29, including rail crossing replacement, the addition of concrete panels, new rail ties and repaving, according to the Port of Benton.

The Port of Benton has plans to replace the State Route 240 crossing in 2023.





# PROJECT COMMUNICATIONS



## **Van Giesen RR work well done**

During the weekend of Aug 20, the railroad crossing on Van Giesen Avenue in Richland was repaired and upgraded. Whichever state agency or railroad did this much-needed work is to be commended. What was a 1940s style super bumpy crossing, is now a modern concrete, smooth crossing — nicely smooth. All travelers thank you, whoever took the project lead!  
*Cecil Kindle, West Richland*



# PROJECT COMMUNICATIONS



## Richland Airport Electrical Replacement Project





# PROJECT BACKGROUND



- **\$3.2 FAA grant for total electrical replacement for all lighting**
- **Project expected July – November, involving complete runway closures**





# PROJECT COMMUNICATIONS

## Project Notes

- Press release to announce project/any delays
- Social media regular updates and photos
- All notices posted on notice boards throughout airport
- Notices hand-delivered to each airport tenant throughout the duration of the project
- Targeted mailing sent to impacted neighbors during runway closure
- Weekly update emails sent to airport users, media and posted to social
- Press release to announce completion



# PROJECT COMMUNICATIONS



2022 - RICHLAND AIRPORT CONSTRUCTION PROJECTS



September 15, 2022

*Richland Airport Neighbors*

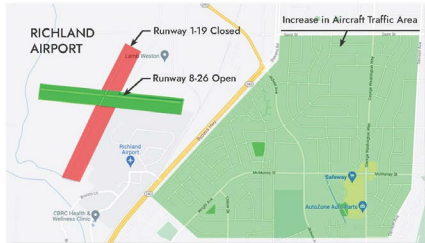
**Expect frequent aircraft flyovers in your neighborhood from September 19 to mid-November.**

The main runway at the Richland Airport (#1-19) will be closed for the next seven weeks to replace all runway and taxiway lights as part of a Federal Aviation Administration-funded electrical replacement construction project.

Aircraft will be diverted to the airport's second runway (#8-26), causing traffic patterns to change temporarily.

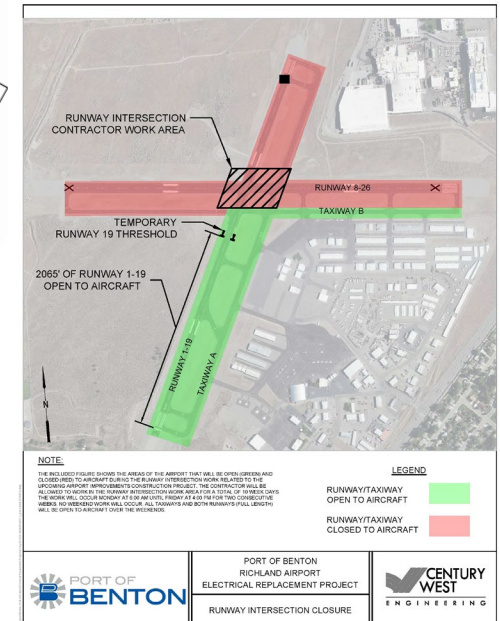
*Residential areas east of the Richland Airport will notice a significant increase in aircraft traffic during the closure. (See map.)*

We apologize for this temporary disruption. As soon as the project is finished in mid-November, we will reopen the main runway and expect aircraft traffic patterns to return to normal.



Visit [PortofBenton.com/Projects](http://PortofBenton.com/Projects) or call 509-375-3060 for more information.

Roger Wright, Port of Benton Project Contact, P.E.  
RichlandAirport@PortofBenton.com | 509-375-3060





# PROJECT COMMUNICATIONS



Thank you!