

# Energy in the Pacific Northwest

Bob Schuetz  
CEO, Energy Northwest  
July 23, 2024

# Who We Are



- Washington state joint operating agency since 1957
- Our 29 members are all public power utilities in Washington
- Own and operate **hydroelectric, wind, solar, battery storage** and **nuclear energy** facilities
- Facilities provide power to utilities in 6 states: Washington, Oregon, Idaho, Montana, Wyoming, California



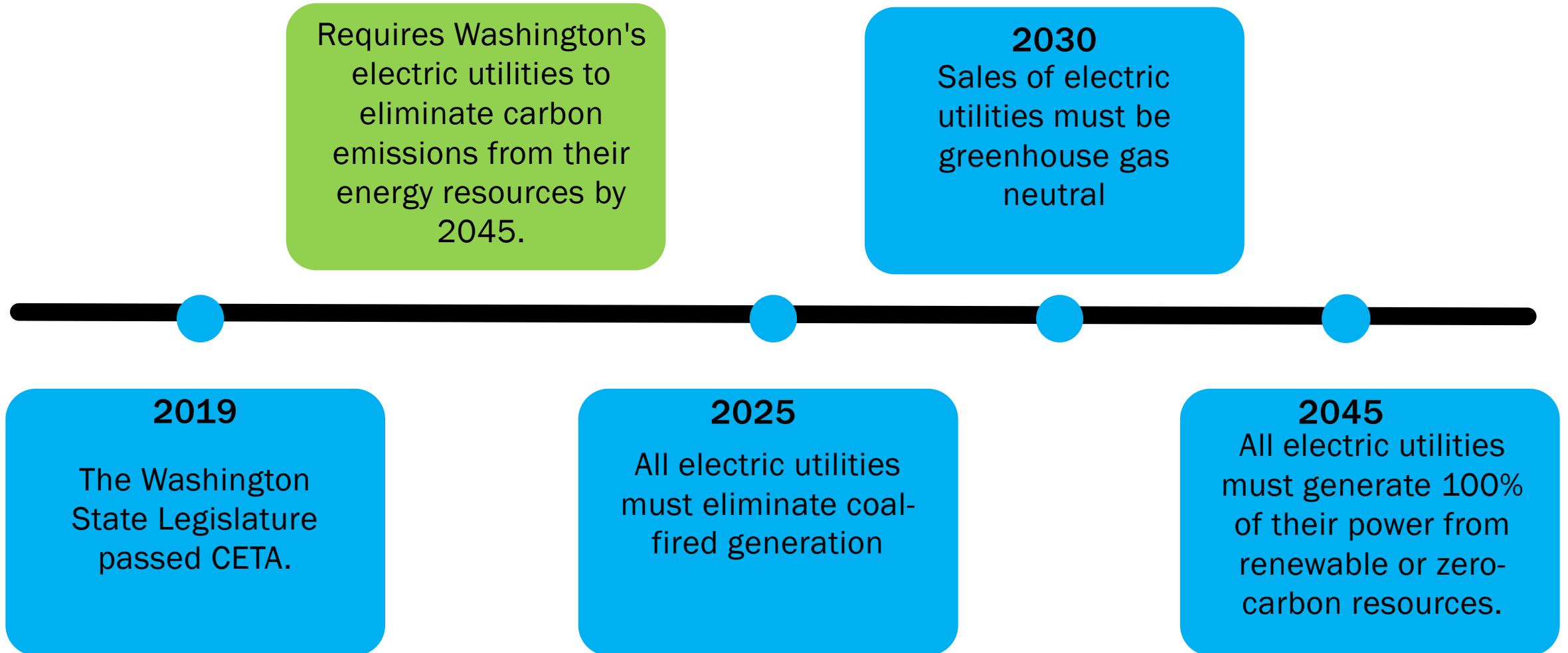




**Columbia Generating Station (1,207 MW)**

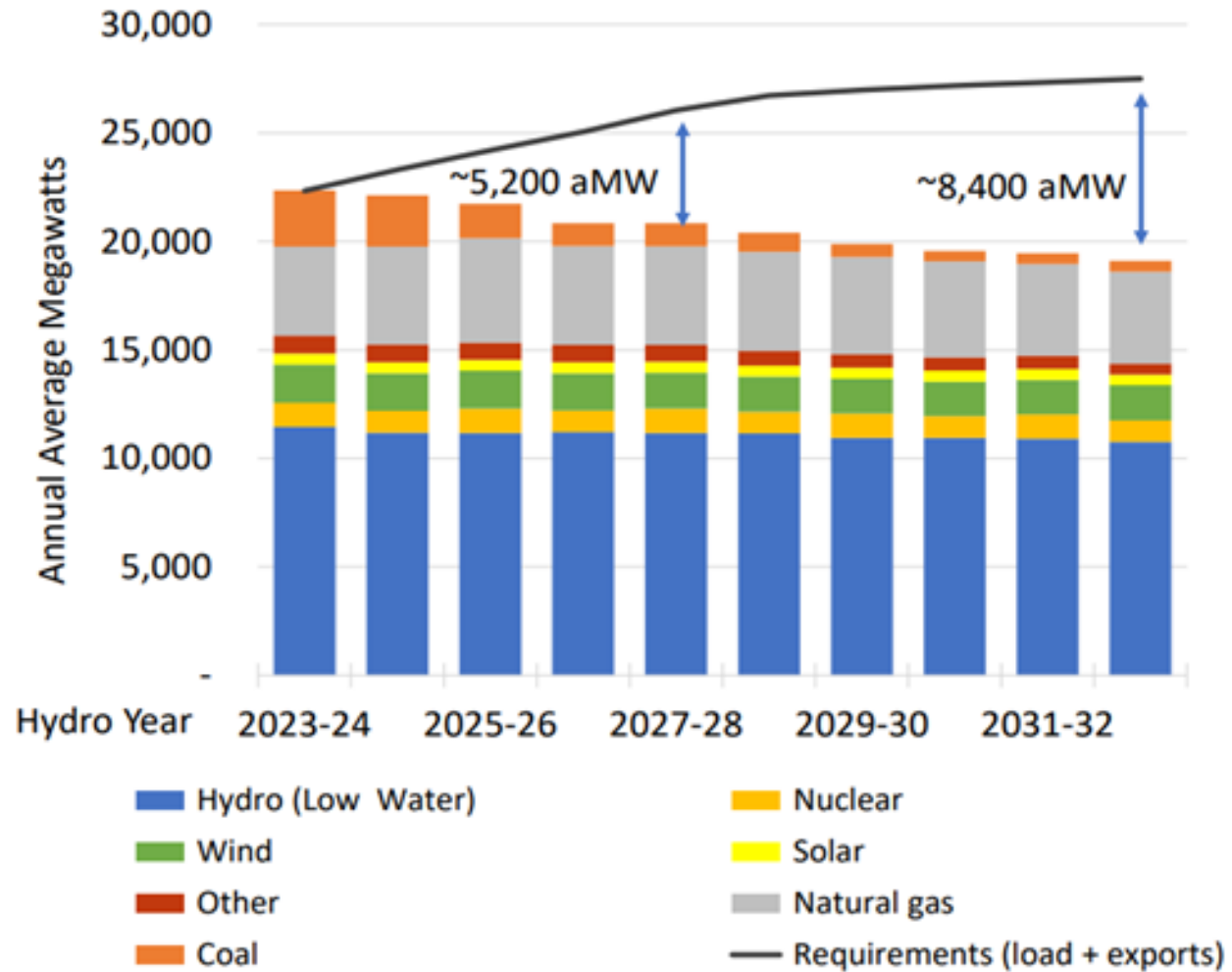


# Clean Energy Transformation Act (CETA)

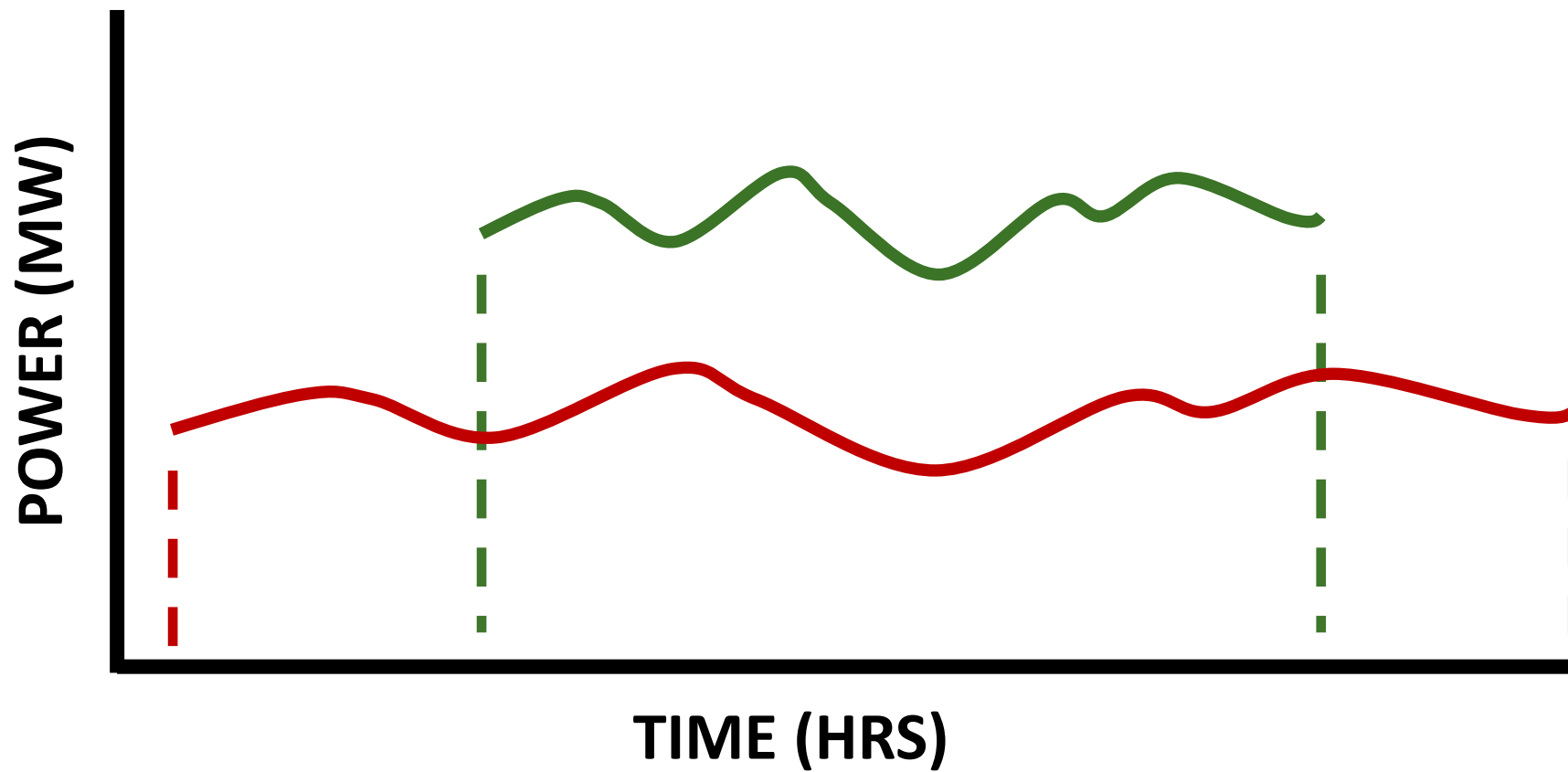


# Projected Energy

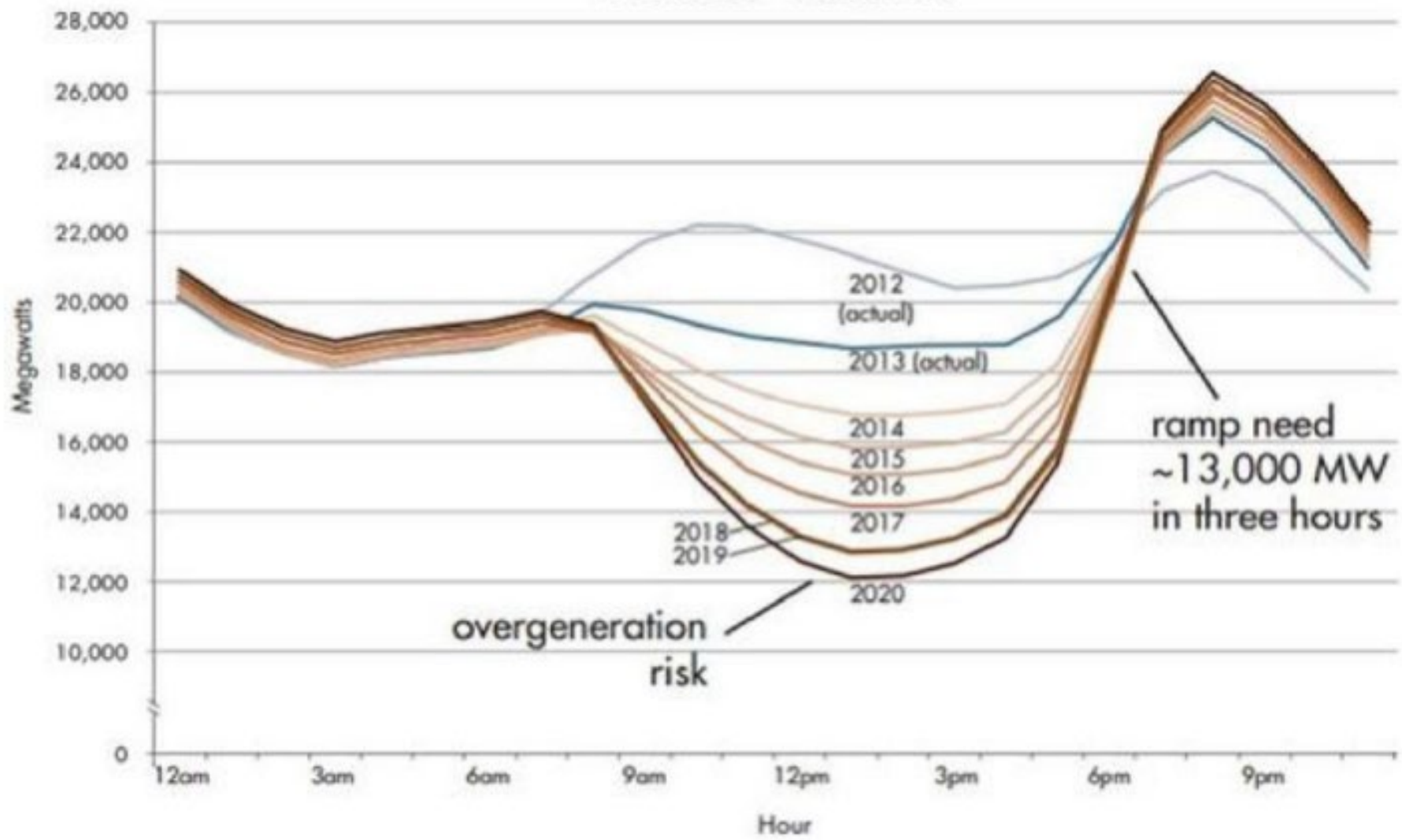
- Aggregation of NW utility Integrated Resource Plans
- Projected capacity shortfalls are higher
- <https://www.pnucc.org/system-planning/northwest-regional-forecast/>



# Capacity (Power) vs. Energy

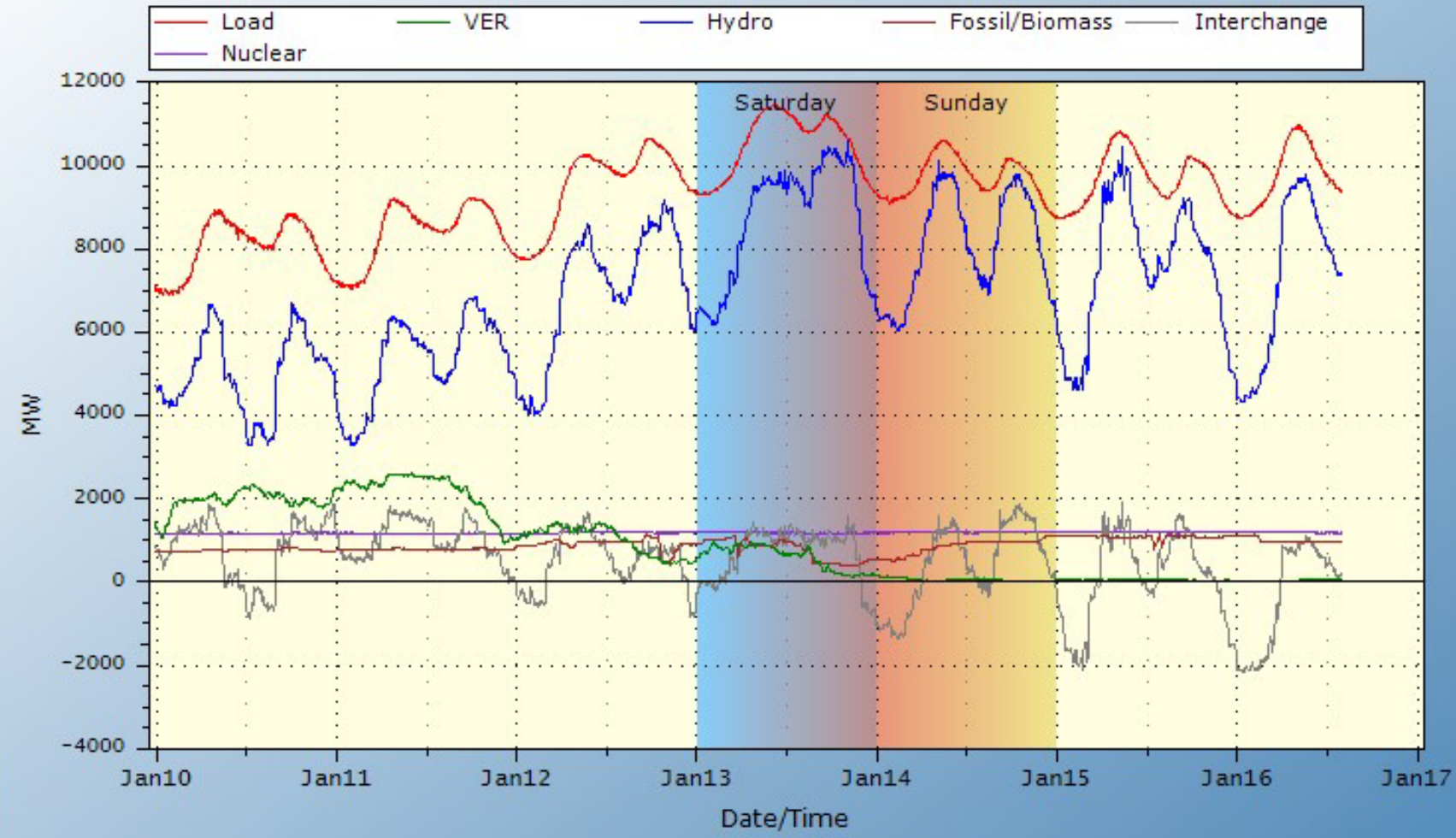


# Limitations of solar energy in peak demand



- January 2024 cold snap
- Record energy demands and peak loads
- Bonneville Power Administration's system hit 11,396 MW

BPA Balancing Authority Load & VER, Hydro, Fossil/Biomass, Nuclear Generation, and Net Interchange Last 7 days  
 10Jan2024 - 17Jan2024 (last updated 16Jan2024 14:00:28)



Based on 5-min readings from BPA's SCADA system for points 45583, 177167, 79682, 79685, 164377, and 70681.  
 Balancing Authority Load in Red, VER in Green, Hydro Gen. in Blue,  
 Fossil/Biomass Gen. in Brown, Nuclear Gen. in Cobalt and Net Interchange in Gray.  
 BPA Technical Operations (TOT OpInfo@bpa.gov)

\*VER = Variable energy resource



# Xe-100 Advanced Reactor

- High Temperature Gas Reactor (HTGR)
- 1-12 modules; scalable design
- 80 MW/reactor module
- 60-year design life
- Modular components built offsite, transportable via rail/road



# Project Pathway

