

# Satsop Business Park Haul Road Erosion Mitigation Project

WPPA Environmental Conference

Thursday, September 21, 2023

Presentation by Kris Koski, Port Engineer



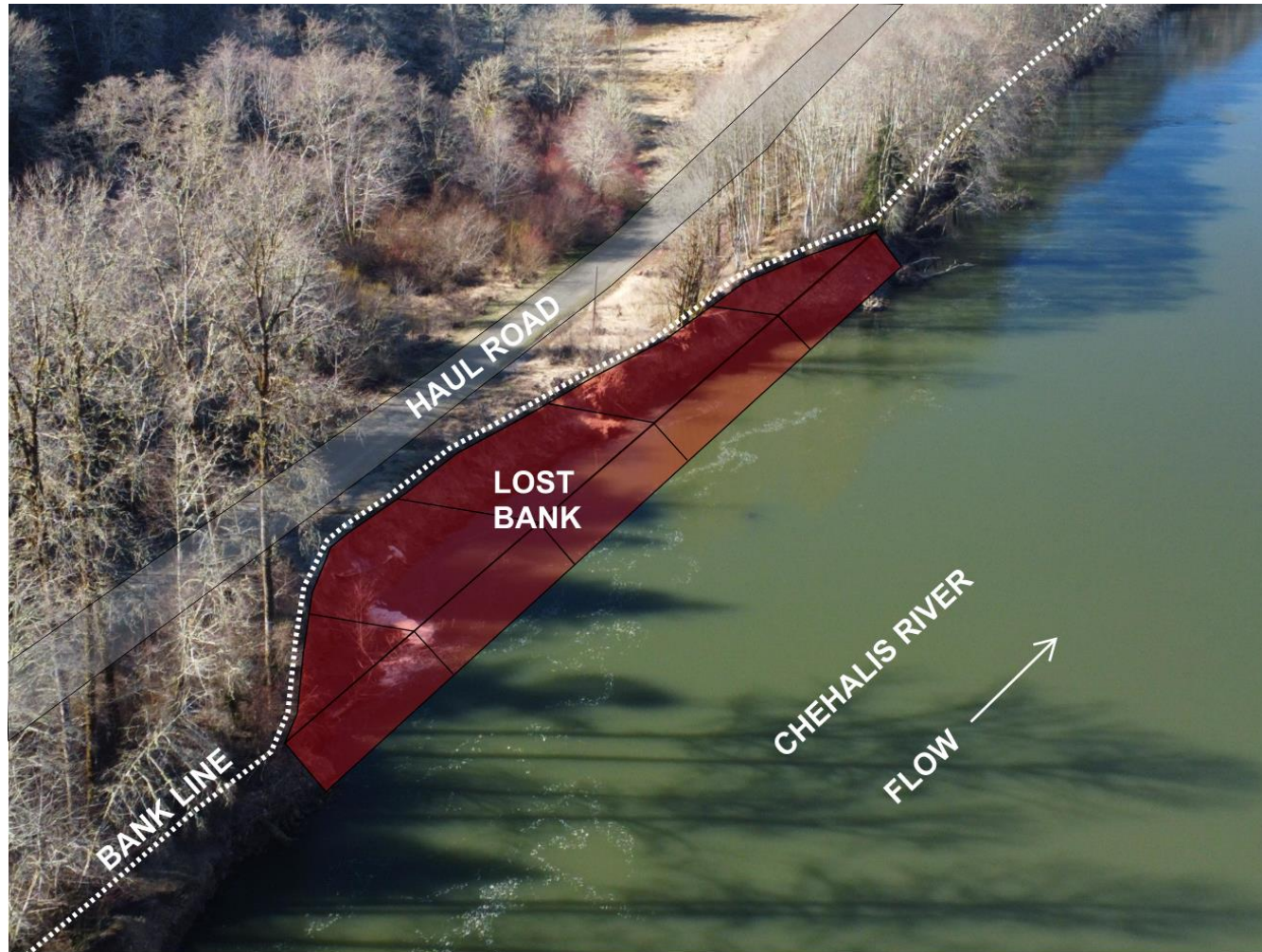
**Port of Grays Harbor**

*On Washington's Pacific Coast*





# Haul Road Erosion Background



- Haul Road utility corridor built with original nuclear plant development.
- Runs approximately four miles between Ranney collector wells in Chehalis River floodplain and Satsop Business Park on nearby hill.
- Includes 42" water main supplying Satsop Business Park with industrial and backup potable water.







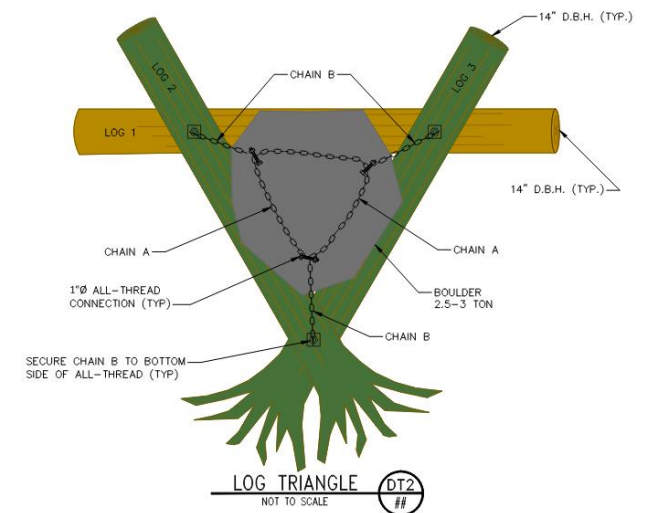
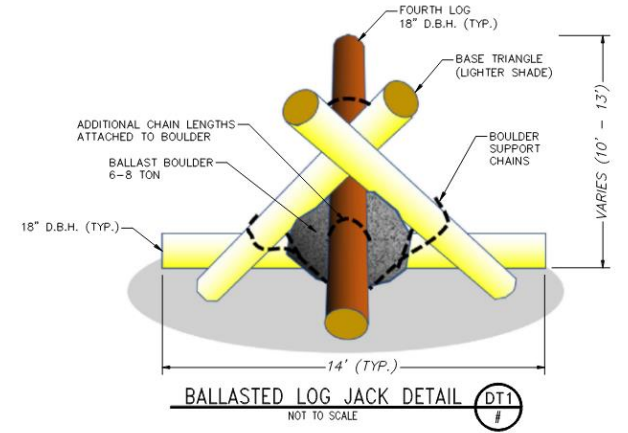
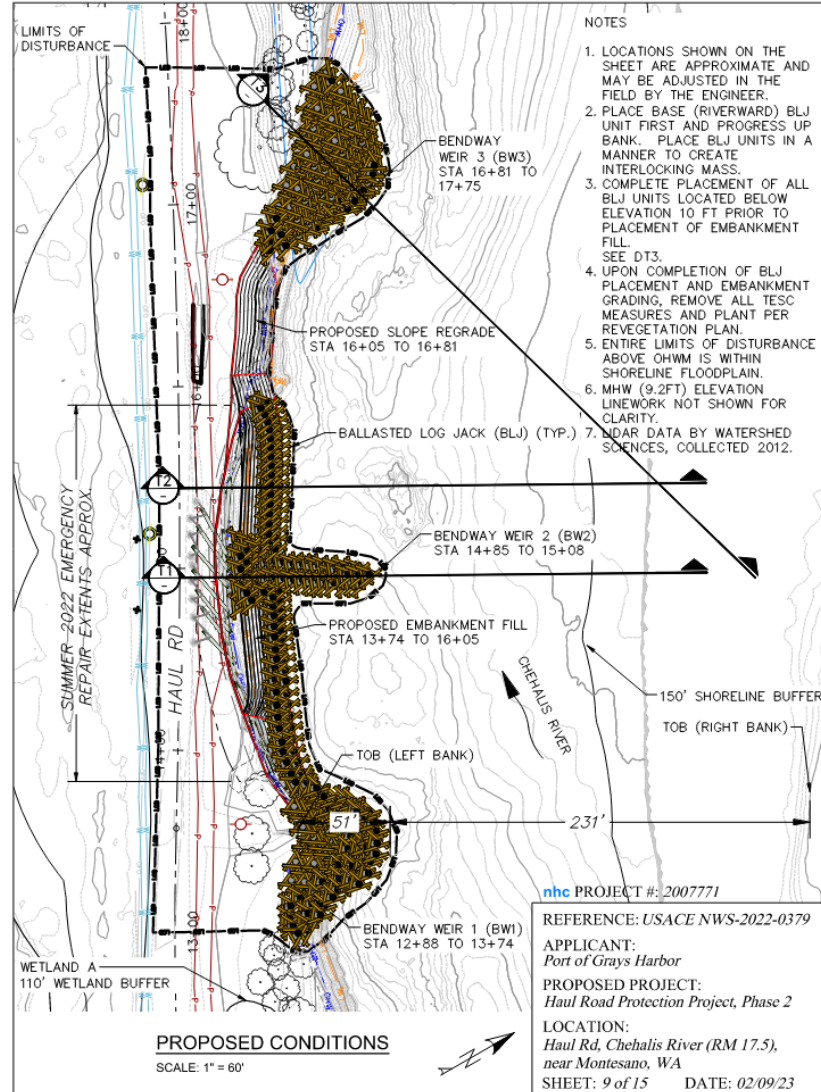
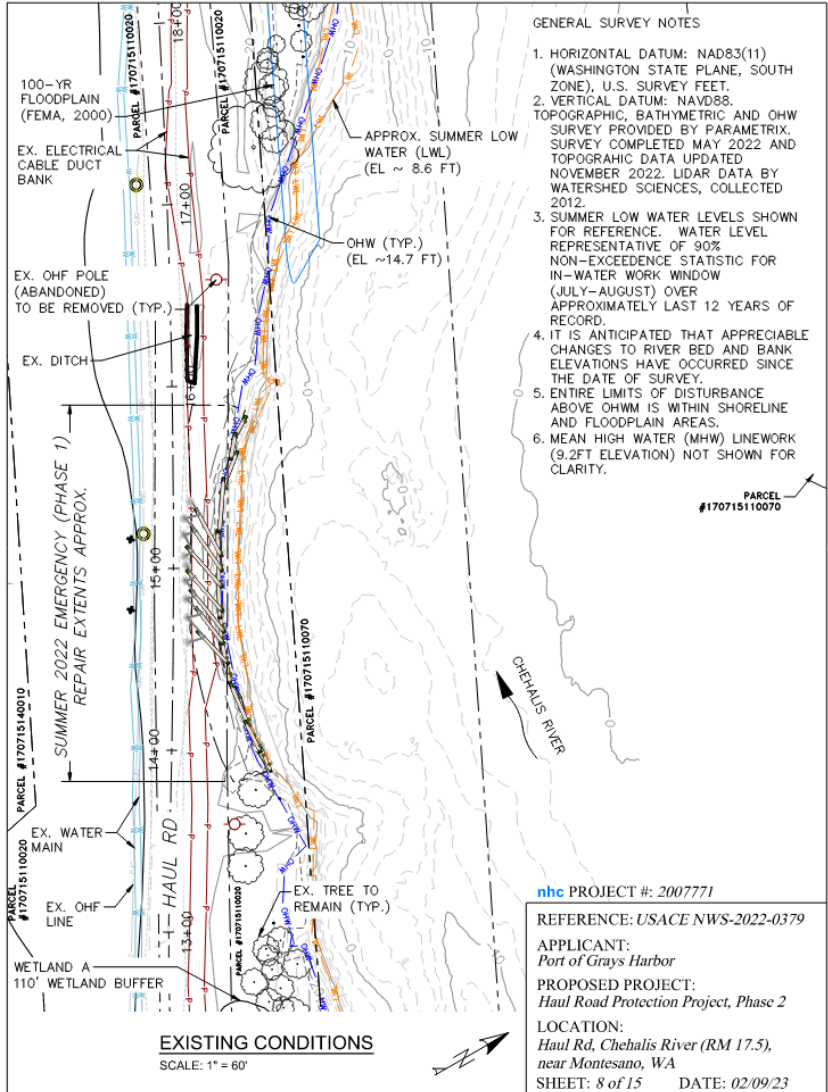








# Haul Road Erosion Mid-Term Project Plan

















# Questions / Discussion

Randy Lewis

Director of Health, Safety & Environment

[rlewis@portgrays.org](mailto:rlewis@portgrays.org)

360-533-9513



**Port of Grays Harbor**

*On Washington's Pacific Coast*