

# Budd Inlet Remediation

Port of Olympia –  
Sediment Cleanup and Level Rise Resiliency

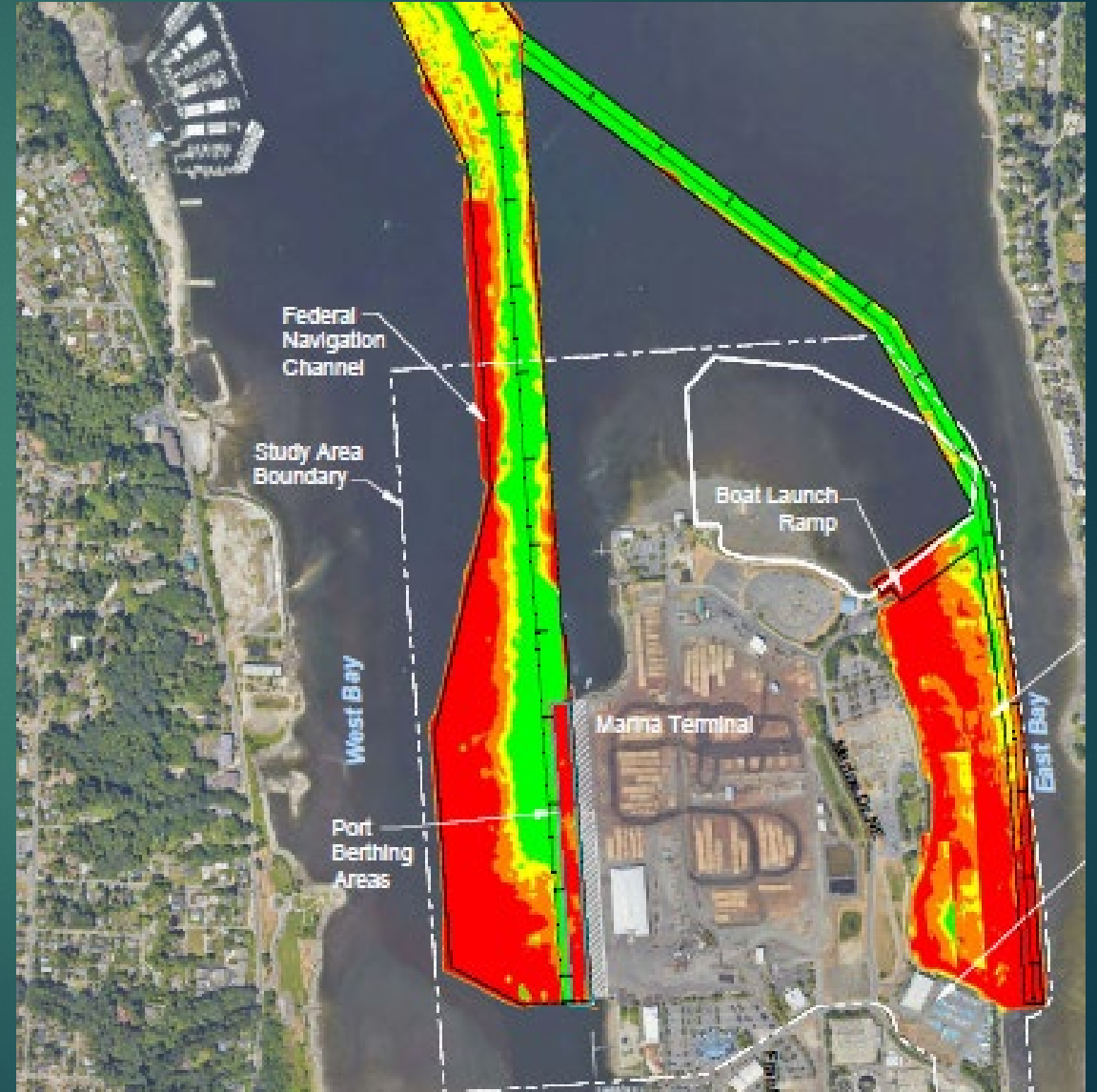
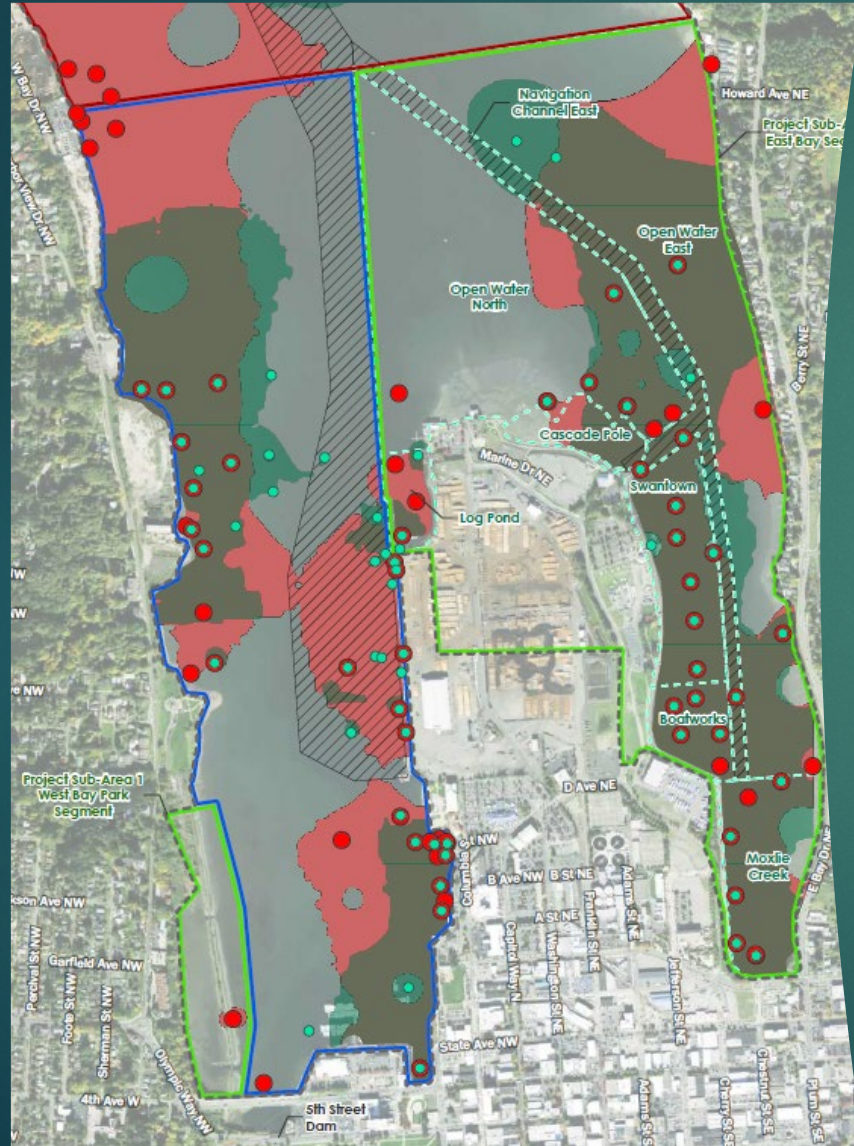
SHAWN GILBERTSON  
PORT OF OLYMPIA  
SEPTEMBER 20, 2024





- large wood treating plant
- forest product facilities with burners
- bulk petroleum storage

# Contaminated Sediments and Shoaling



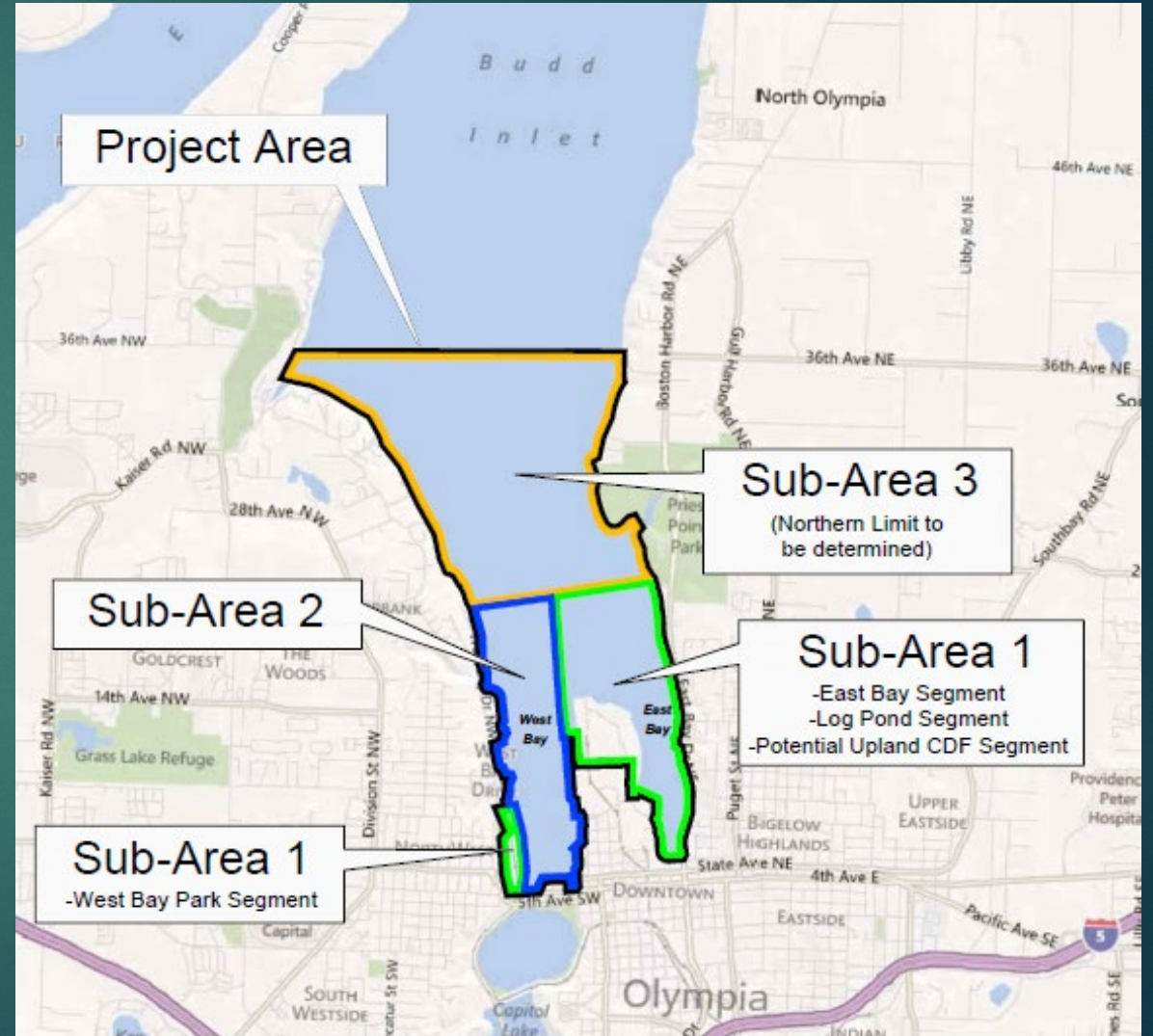
# Pollutants of Concern

- ▶ Dioxin/Furans
- ▶ Polycyclic aromatic hydrocarbons (PAHs)
- ▶ Metals
- ▶ Pentachlorophenol
- ▶ Ecology Agreed Order



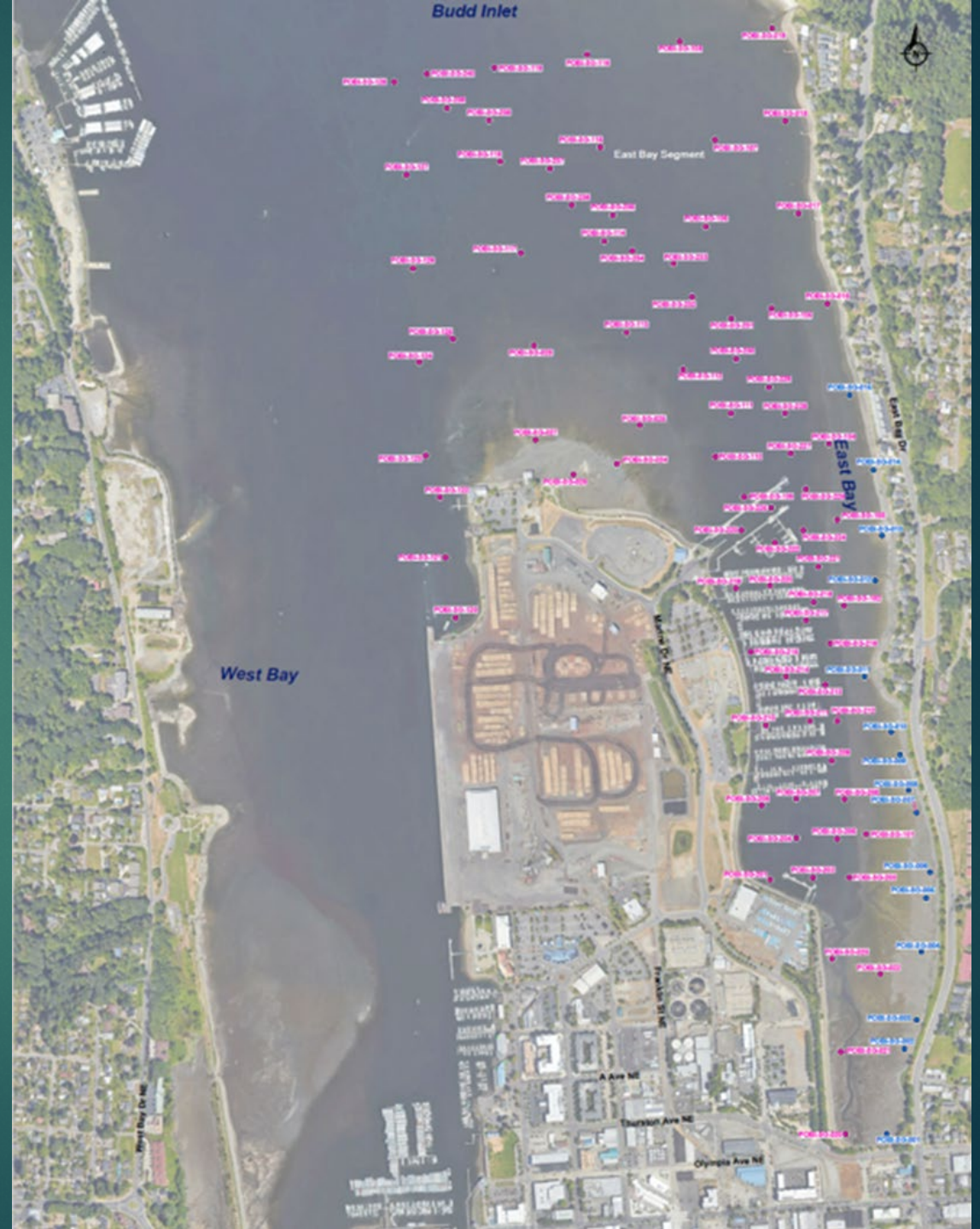
# Project site, Site, **Site**

- ▶ Scope creep
- ▶ 3<sup>rd</sup> iteration of Agreed Order
- ▶ Ecology – Positive Relationship
- ▶ Remedial Action Grants



# Sediment Sampling

- ▶ Over 100 locations sampled in 2024
- ▶ Over 1,200 surface and subsurface samples collected
- ▶ Results currently undergoing validation
- ▶ Early indications





# Sediment Management Options

- ▶ Natural recovery
- ▶ Open water disposal
- ▶ Address sea level rise
- ▶ Restore habitat
- ▶ Upland CDF
- ▶ CAD
- ▶ Landfill

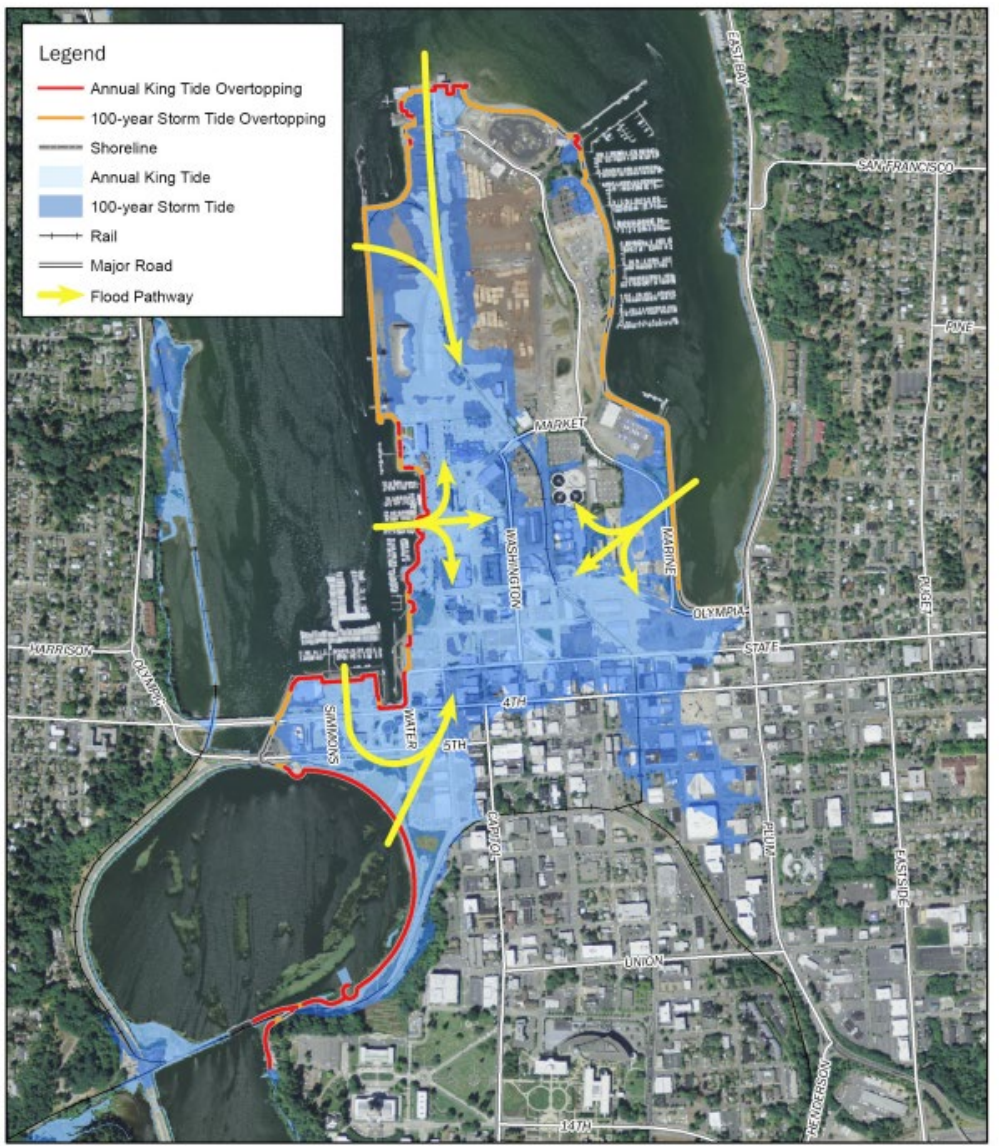


# Project Challenges and Opportunities

- ▶ Swantown Marina
- ▶ Marine Terminal
- ▶ Onsite Sediment Management
- ▶ West Bay Shoreline Habitat
- ▶ Funding
- ▶ Timing







0 500 1,000 2,000 Feet



**OLYMPIA SLR RESPONSE PLAN**  
*Projected Flooding 24" Sea Level Rise*  
**AECOM**

# Sea Level Rise

- ▶ SLR resilience
- ▶ Mixed feedback from public
  - ▶ Want SLR mitigation
  - ▶ Don't want contaminated sediments upland
- ▶ Master planning effort ongoing

# Deschutes Estuary Project

- pulling the plug on sediment



# Thank you!

