



This is COOL!!!

Maulsby Tidelands Saltmarsh Creation



Maulsby Tidelands Saltmarsh Creation

VICINITY MAP



Port Owned Tidelands (+/-175 ac)

Snohomish River

Jetty Island

Federal nav channel

Navy Base

Everett

American Legion Memorial Park

Lundeen Park

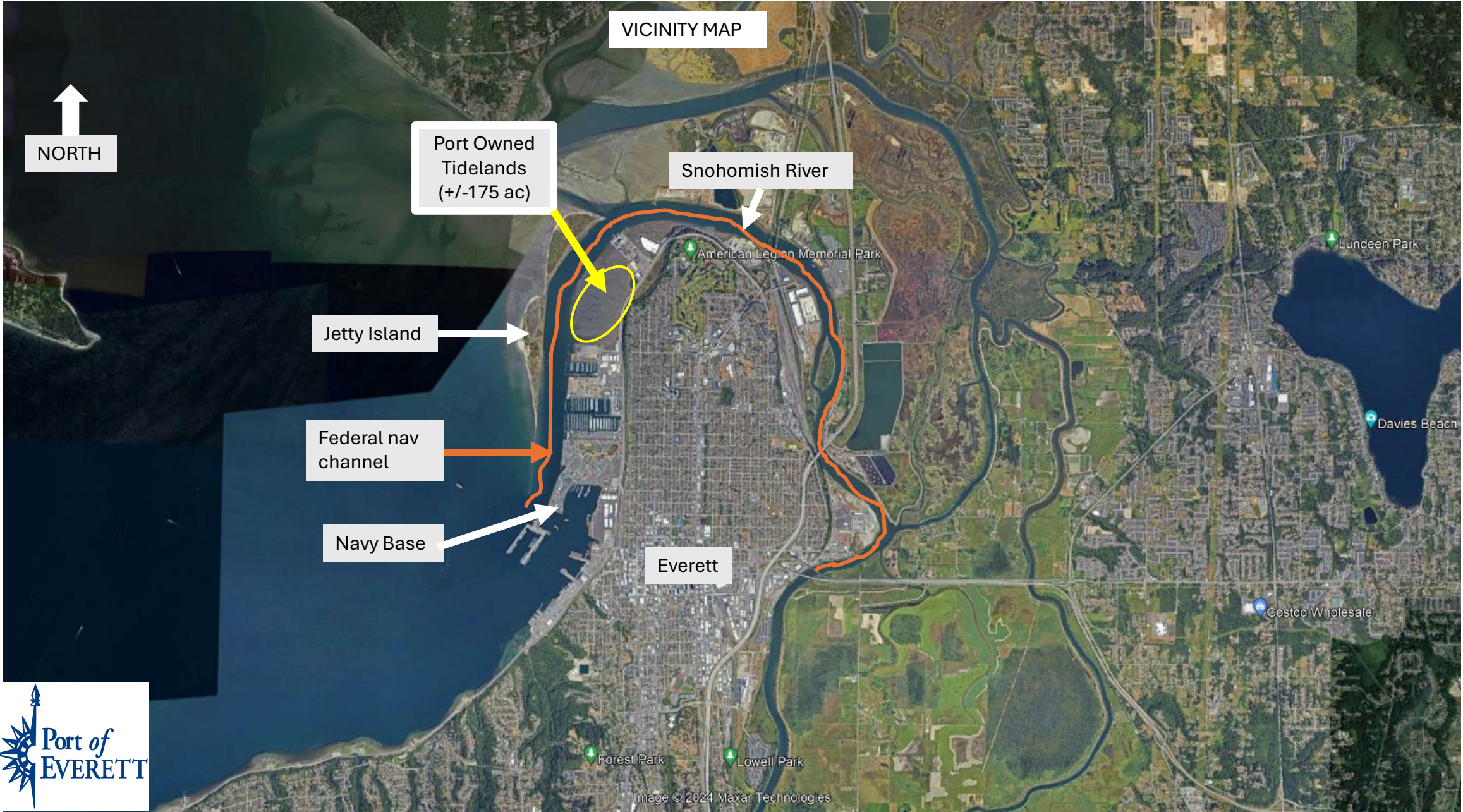
Davies Beach

Costco Wholesale

Forest Park

Lowell Park

Image © 2024 Maxar Technologies

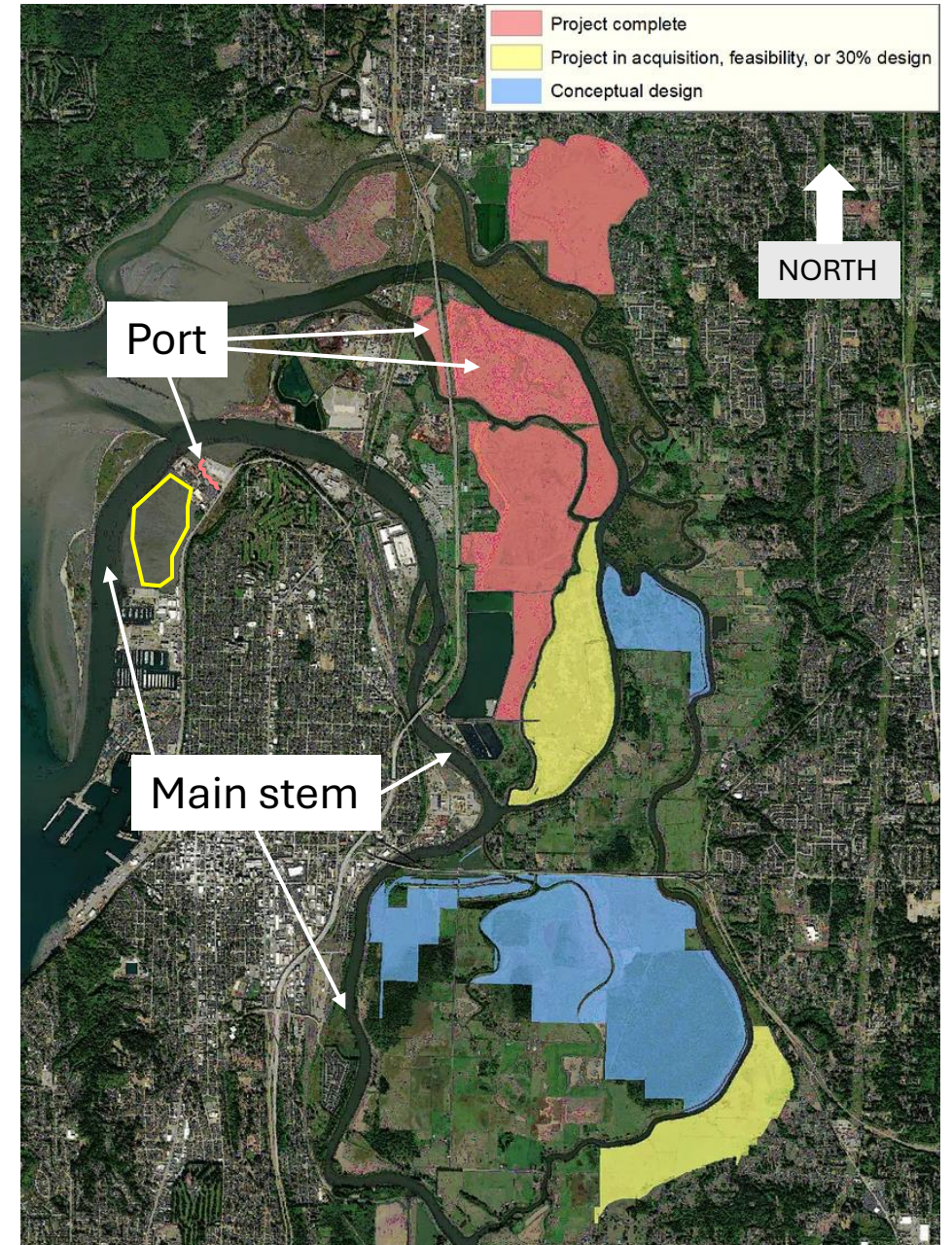




Maulsby Tidelands Saltmarsh Creation

Restoration Efforts in Snohomish River Estuary

- Snohomish River estuary restoration projects led by the Port, county, state, and tribes in Snohomish County.
- Existing projects have focused on the sloughs, with limited restoration in mainstem, forcing juveniles to find the sloughs.
- Proposed project location outlined in yellow.



Background image compliments of WDFW, February 2023



Maulsby Tidelands Saltmarsh Creation

Convert Yuck





Maulsby Tidelands Saltmarsh Creation

To WOW!!





Maulsby Tidelands Saltmarsh Creation



Increase elevations sufficient to grow saltmarsh vegetation



Soften the existing armored shoreline



Dissipate storm energy, and



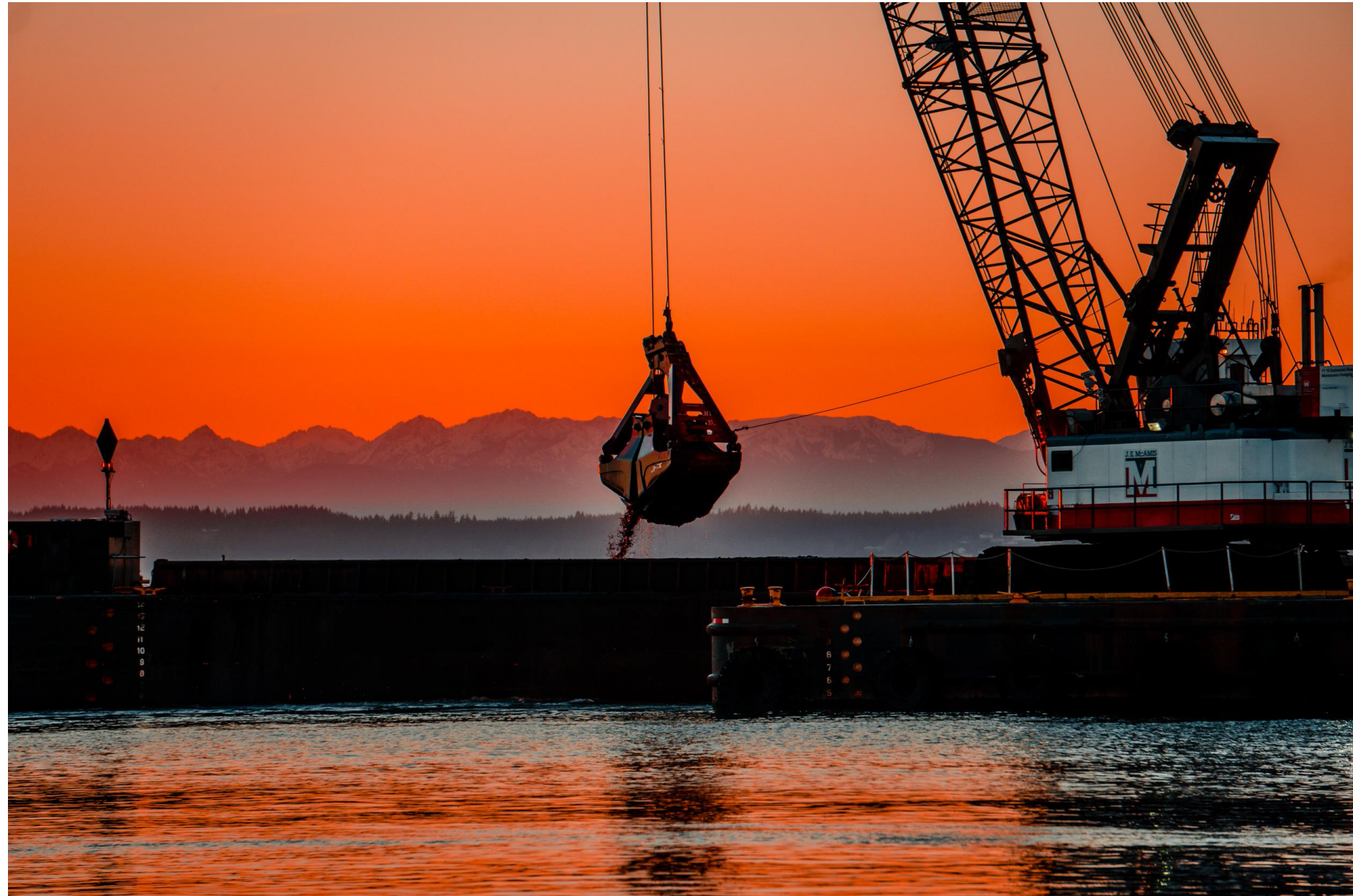
Public access ... BEACH!



Maulsby Tidelands Saltmarsh Creation

But HOW??

**DREDGING,
of course!**



Maulsby Tidelands Saltmarsh Creation





Maulsby Tidelands Saltmarsh Creation (CONCEPTUAL DEPICTION; engineering will determine final design)





Maulsby Tidelands Saltmarsh Creation

The Port Anticipates Significant Support

BUDM!

Corps – opportunity to help meet their goal of 70% of maintenance dredged material going to beneficial use

- City of Everett – enhanced protection of City owned shoreline and SR 529 decreases maintenance costs; enhanced public access to shoreline for public benefit

BUDM!

Tulalip Tribes – creation of habitat for salmonids to provide food source for orcas and support of culturally significant fishery

BUDM!

US EPA, WDFW, DNR, ECY – increased habitat value for salmonid recovery, and indirectly benefitting orca recovery

ON BOARD!!!



Maulsby Tidelands Saltmarsh Creation

Thanks!

Port of Everett Contacts

Laura Gurley, Director of Planning

Laurag@portofeverett.com / 425-330-6564

Jake Kirschner, Environmental Project Manager

JacobK@portofeverett.com / 425-388-0268

Adam LeMieux, Government Affairs Manager

AdamL@portofeverett.com / 425-572-2829