



ENVIRONMENTAL COMMITTEES AGENDA

Skamania Lodge, Stevenson

Stevenson B

10:00 – 11:30 am

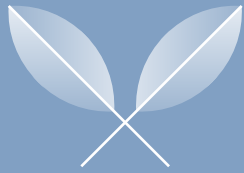
Thursday, May 16, 2024

Joint Environmental Committees:

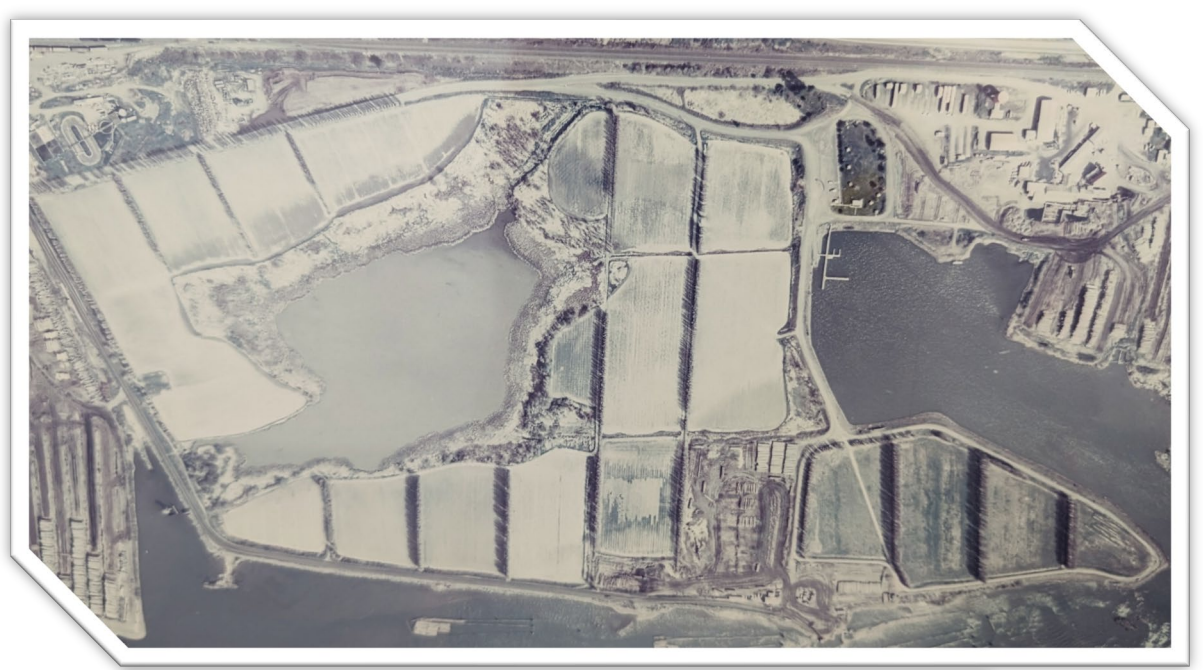
Environmental Policy Committee Q2 Meeting

Environmental Technical Committee

Shoreline Permit Process



Port of Klickitat





The Project

- Shoreline Substantial Development Permit
- Shoreline Conditional Use Permit
- Construct Infrastructure Improvements on 40 Acres around Wetland Complex Bingen Point Business Park
 - *leveling and grading 25 acres*
 - *200,000 cubic yards fill*
 - *3,000+ feet sanitary sewer main*





The Project

- 5000'+ *Water, Power, Irrigation and Telecom*
- 6900' *Asphalt Roadway*
- 6300' *Stormwater Bioswales, Ditches, Mains and Outfalls*
- 10,000' *Asphalt Multi-Use Paths*
- 115,000 *sf Recreational Parking Spaces*
- *Relocating 2 Existing Pump Houses*



5/30/2007 9:45 AM



<https://www.istockphoto.com/photo/young-american-beaver-at-base-of-beaver-lodge-gm18333484014842078>



https://www.allaboutbirds.org/guide/Great_Blue_Heron/id



<https://www.thesprucepets.com/painted-turtles-1238355>



<https://extension.wvu.edu/natural-resources/wildlife/coyotes>





Permit Process

KC Shoreline Permit

- ✓ Draft SEPA/JARPA/Permit Submitted
 - ↳ fees paid
- ✓ Pre-submission Walkthrough w/ DOE, KC, WDFW
- Wetland Delineation/Rating
 - ✓ ↳ Hire SME - UZ
 - ✓ ↳ fieldwork 11/30
 - ✓ ↳ report 12/8 Teams mtg
 - ↳ submit to KC - UZ
- ✓ Floodplain Development Permit Application
 - ✓ ↳ Darrin to complete Elevation Certificate 12/1
 - ↳ UZ sign
 - ✓ ↳ Darrin to update BP Site Dev map w/ S. pump house location & size
 - ↳ UZ sign
 - ✓ ↳ submit amended Shoreline Permit's JARPA - UZ
- ✓ • Public Hearing 4/15
- KC Board approval (conditional) 5/14
- DOE Approval

- Submit Draft Shoreline Substantial Development Permit, SEPA, and JARPA
- Pre-submission Walkthrough with Dept. of Ecology, County (Permitting agency), and Dept. of Fish & Wildlife
- Submit Final Shoreline Permit, SEPA, JARPA
- Fees \$\$
- Wetland Delineation / Rating
 - Select a Subject Matter Expert to complete fieldwork and draft a report.
 - Review and submit report to County (Permitting agency).
- Floodplain Development Permit Application
 - Engineer to complete the elevation certificate and ensure drawings are accurate
 - Resubmit Permit, SEPA, JARPA with revisions
- County Planning Commission Public Hearing
- Respond to comments
- Planning Commission Recommendation Approval
- County Board of Commissioners Approval
 - 30 days
- Department of Ecology Approval



Shoreline Permits, SEPA, JARPA

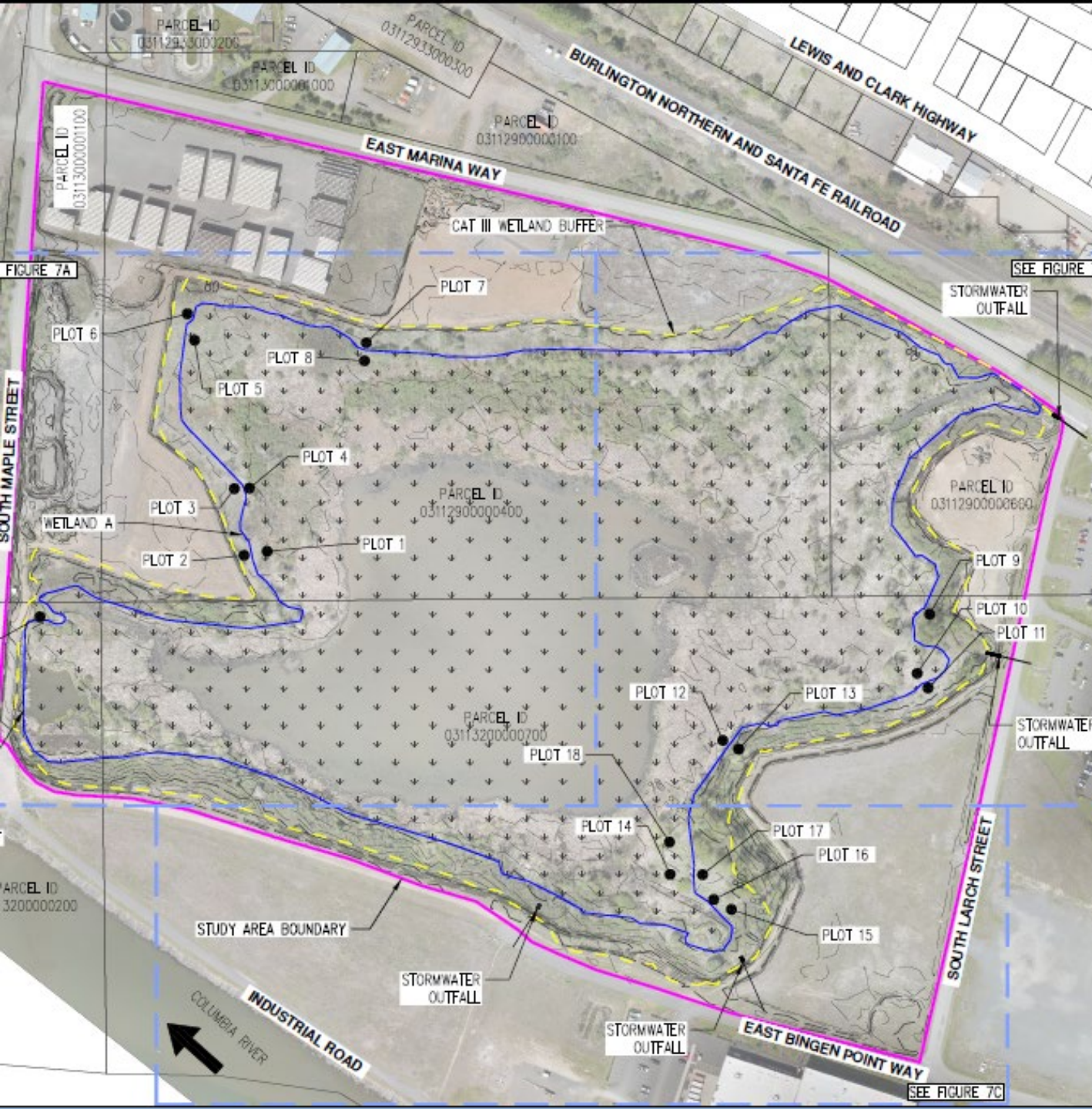
- Submit Draft Shoreline Substantial Development Permit, SEPA, and JARPA
- Pre-submission Walkthrough with Dept. of Ecology, County (Permitting agency), and Dept. of Fish & Wildlife
- Submit Final Shoreline Permit, SEPA, JARPA
- Fees \$\$





Wetland Delineation / Rating

- Select a Subject Matter Expert to complete fieldwork and draft a report.
- Review and submit report to County (Permitting agency).
- Review feedback from DOE, Tribes, WDFW





Review and Approval

- County Planning Commission Public Hearing
- Respond to comments
- Planning Commission Recommendation Approval
- County Board of Commissioners Approval
 - 30 days
- Department of Ecology Approval
- Timelines: 10-12 Months Minimum

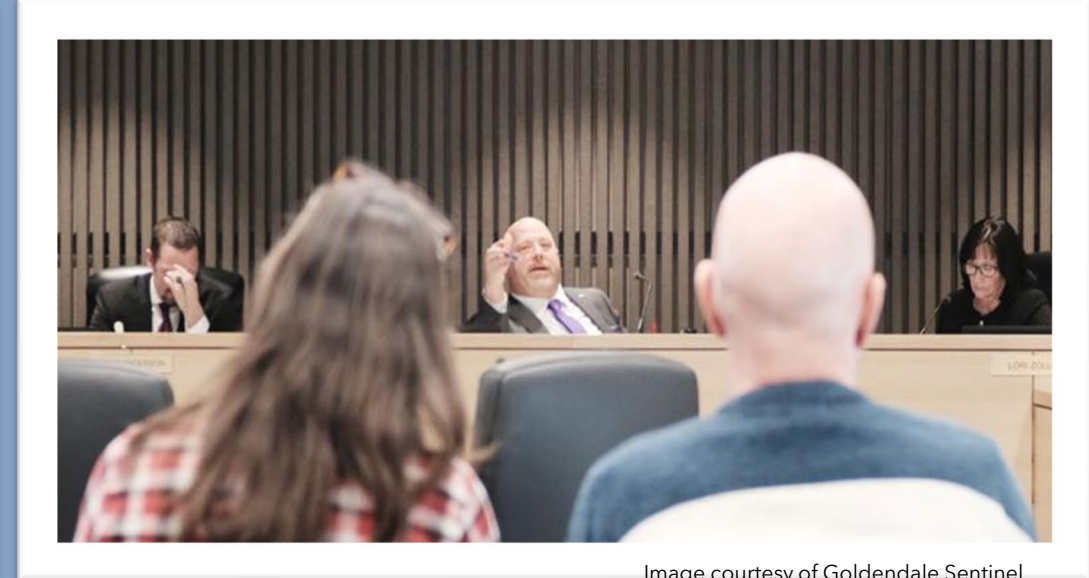
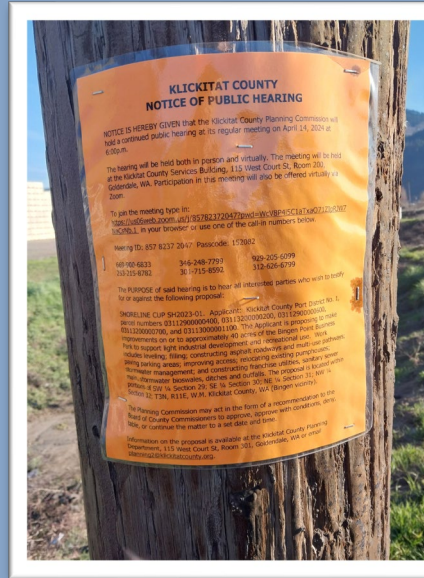


Image courtesy of Goldendale Sentinel





Thank you! Questions?

DAVID SAUTER

PROPERTY MANAGER

509-493-1655

DSAUTER@PORTOFKCLICKITAT.COM





Round Robin – Share some news!

THE FLOOR IS OPEN

