



Jennifer Ott
Executive Director
jennifer@historylink.org

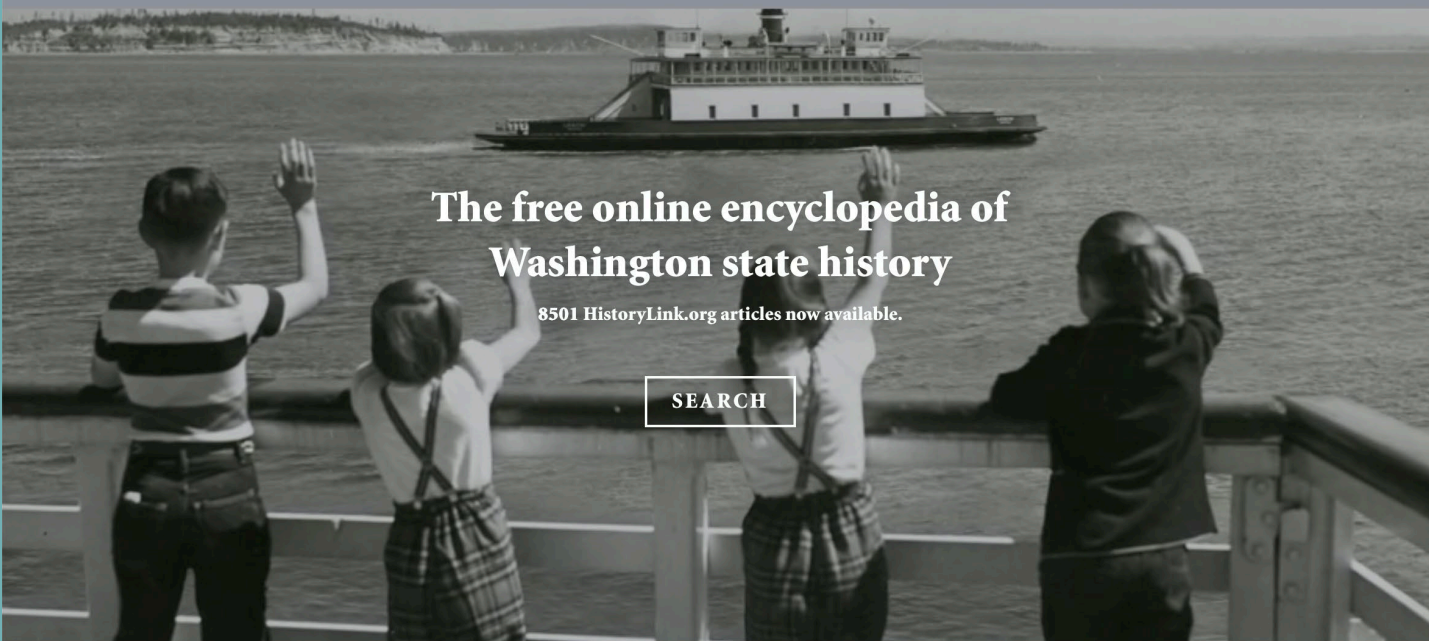
[Home](#)[Explore](#)[Tours](#)[Education](#)[About](#)[Events](#)[Select Language](#)

Powered by [Google Translate](#)

[DONATE](#)[IN THE CLASSROOM](#)[CURRICULUM MATERIALS](#)

The free online encyclopedia of Washington state history

8501 HistoryLink.org articles now available.

[SEARCH](#)



Welcome to HistoryLink's Walking Tours





Teach.
History
Link.org

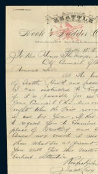
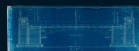




SEATTLE AT 150

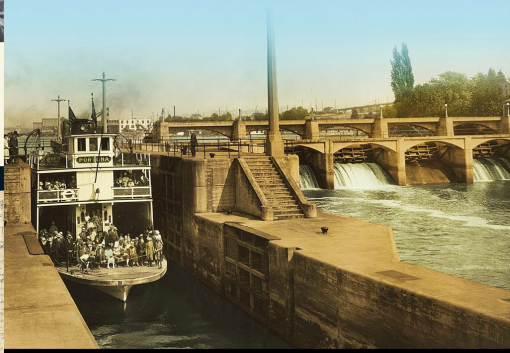
STORIES OF THE CITY THROUGH 150 OBJECTS FROM THE SEATTLE MUNICIPAL ARCHIVES

By Jennifer Ott and the HistoryLink Staff



WATERWAY

THE STORY OF SEATTLE'S LOCKS AND SHIP CANAL

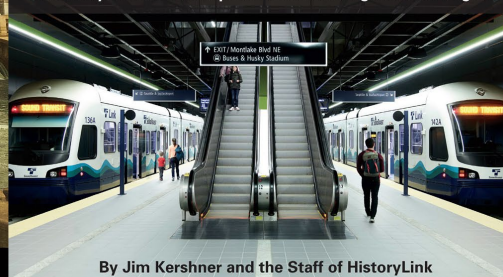


DAVID B. WILLIAMS, JENNIFER OTT, AND THE STAFF OF HISTORYLINK



TRANSIT

The Story of Public Transportation in the Puget Sound Region



By Jim Kershner and the Staff of HistoryLink

OLMSTED IN SEATTLE

CREATING A PARK SYSTEM FOR A MODERN CITY

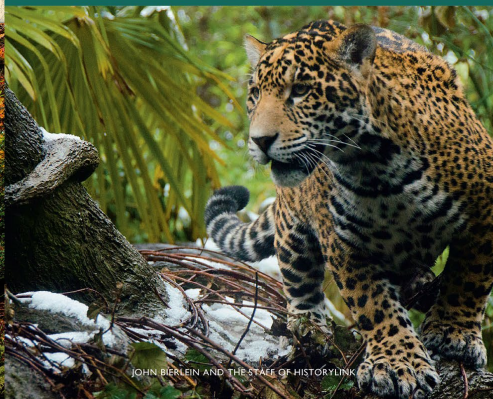
By JENNIFER OTT and the HistoryLink STAFF

GENERAL PLAN
BY
SEATTLE ARBOR



WOODLAND

THE STORY OF THE ANIMALS
AND PEOPLE OF WOODLAND PARK ZOO



JOHN BERLEIN AND THE STAFF OF HISTORYLINK

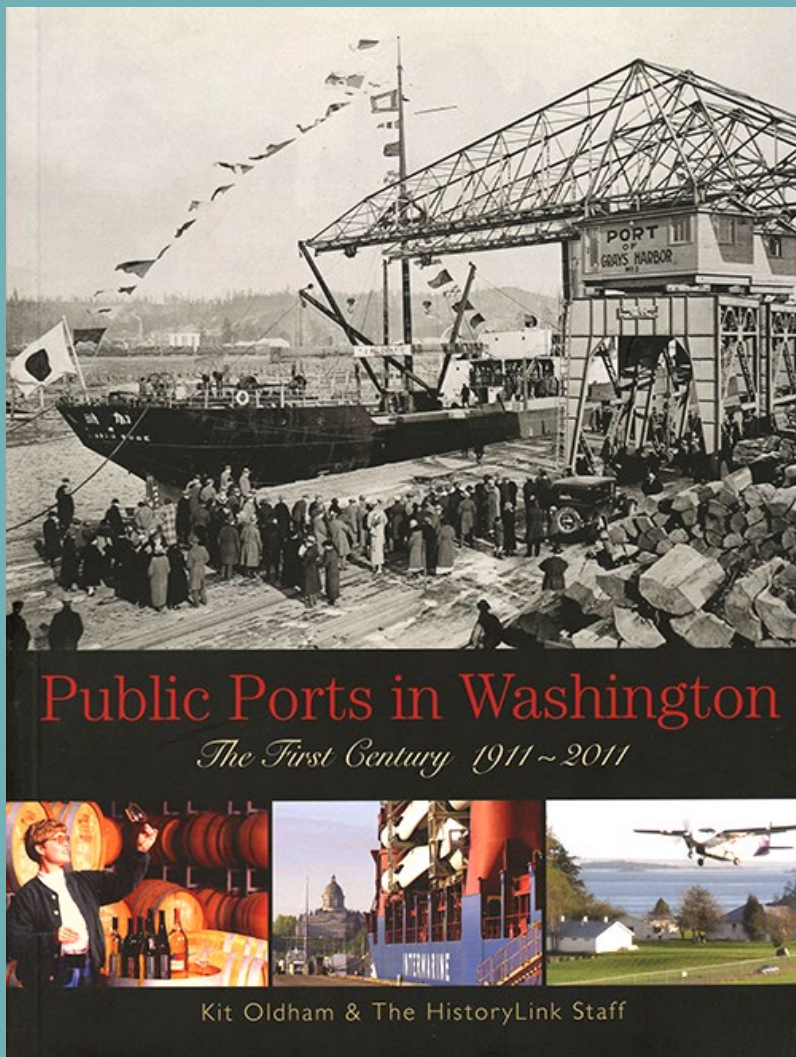
21ST CENTURY



The Future Remembered

THE 1962 SEATTLE WORLD'S FAIR AND ITS LEGACY

PAULA BECKER, ALAN J. STEIN & THE HISTORYLINK STAFF



Governor Marion Hay signs Port District Act, which authorizes creation of public ports to develop and operate harbors, on March 14, 1911.

Share →

By [Kit Oldham](#) | Posted 2/01/2005 | [HistoryLink.org Essay 7241](#)



This essay made possible by:
 Washington State Department
 of Transportation (WSDOT)



Central Pier 1, Port of Seattle,
 ca. 1915

On March 14, 1911, Governor Marion E. Hay (1865-1933) signs legislation authorizing the establishment of public port districts. The Port District Act, which allows citizens to end private monopoly control of urban harbors, is a victory for progressive and populist reformers then at the height of their influence in Washington. Voters in Seattle and Grays Harbor will create the first two port districts later that year and many more will be established around the state in succeeding years.

Progressive Movement

King County voters create Port of Seattle on September 5, 1911.

On September 5, 1911, a long struggle for control of Seattle's central waterfront climaxes when King County voters approve formation of the Port of Seattle and elect

Voters approve creation of Port of Vancouver on April 6, 1912.

On April 6, 1912, the voters of Vancouver by a large margin give the go-ahead for the establishment of a port district, a new type of municipal corporation that

Voters create Port of Kennewick on March 6, 1915 to provide docks for Columbia River steamer

Voters approve the formation of Port of Ilwaco on March 4, 1928.
On March 4, 1928, voters

Pierce County voters create Port of Tacoma on November 5, 1918.

Voters approve the formation of Port of Peninsula on November 6, 1928.

On November 6, 1928, voters approve the formation of the Port of Peninsula, located on the Long Beach Peninsula in Pacific County. The Port's district encompasses the peninsula from Long Beach to the ...

[Read More](#)

Voters approve formation of Port of Tracyton on June 1, 1929.

On June 1, 1929, voters in Tracyton approve the formation of the Port of Tracyton. Members of the Tracyton community, an unincorporated area of Kitsap County on Dyes Inlet, petitioned the Board of Cou...

[Read More](#)

Ridgefield voters unanimously approve formation of Port of Ridgefield on March 15, 1940.

On March 15, 1940, Ridgefield voters unanimously approve the formation of the Port of Ridgefield. Ridgefield is located on Lake River, a tributary to the Columbia River in northern Clark County. Initi...

[Read More](#)

Voters approve the formation of Port of Klickitat on November 7, 1944.

On November 7, 1944, voters approve the formation of the Port of Klickitat. The port district encompasses the western third of Klickitat County, from the Skamania County line to just east of the commu...

[Read More](#)

Voters approve formation of Port of Quincy on March 11, 1958.

On March 11, 1958, voters approve the formation of Grant County Port District No. 1, known as Port of Quincy. Encompassing the cities of Quincy and George, the Port covers 572 square miles and is the ...

[Read More](#)

Orcas Island voters approve Port of Orcas on September 9, 1958.

On September 9, 1958, the voters of Orcas Island in San Juan County approve the establishment of a port district on the island, the primary purpose of which is to purchase and operate an airstrip to ...

[Read More](#)

Voters approve formation of Port of Wilson Creek on March 8, 1960.

On March 8, 1960, voters approve the formation of Grant County Port District No. 6, also known as the Port of Wilson Creek. The port district encompasses the small community of Wilson Creek in norther...

[Read More](#)

Voters approve formation of Port of Warden on April 12, 1960.

On April 12, 1960, voters in a special election approve Grant County Port District No. 8, known as the Port of Warden. The Port is originally formed as a defensive measure against the impending expans...

[Read More](#)

King County voters approve Port of Seattle expansion on November 8, 1960.

On November 8, 1960, King County votes to expand the Port of Seattle Commission from three to five members and approves a \$10 million bond issue for Port development, including construction of revolut...

[Read More](#)

Voters approve Langley Port District, later to become Port of South Whidbey, on August 29, 1961.

On August 29, 1961, voters on Whidbey Island approve the formation of the Langley Port District to develop an all-season boat marina in the town of Langley. This original port district, which consists...

[Read More](#)

Voters approve merger of Port of Wind River and Port of North Bonneville to form Port of Skamania County on September 15, 1964.

On September 15, 1964, Skamania County voters approve the merger of the Port of Wind River and the Port of North Bonneville, forming the Port of Skamania County. The consolidation follows three years ...

[Read More](#)

Voters in Ephrata approve creation of Port of Ephrata on June 29, 1965.

On June 29, 1965, voters in Ephrata approve the creation of the Port of Ephrata. The ballot measure -- officially titled Port District No. 9 of Grant County -- is presented to voters as a much-needed ...

[Read More](#)

Lopez Island voters approve formation of port district on November 5, 1968.

On November 5, 1968, voters on Lopez Island approve the creation of a port district, the primary purpose of which is to establish a public airport to serve island residents and visitors. The district ...

[Read More](#)

Grandview voters create state's newest port on November 8, 1988.

On November 8, 1988, voters in Grandview, located in Yakima County, overwhelmingly approve the creation of the Port of Grandview, the most recent port district to be created in the state. The issue pa...

[Read More](#)



Airports Owned by Washington's Public Port Districts

Barge Ports on the Columbia and Snake Rivers

Deep-Draft Ports of Washington

Public Port Districts and Access to the Waterfront

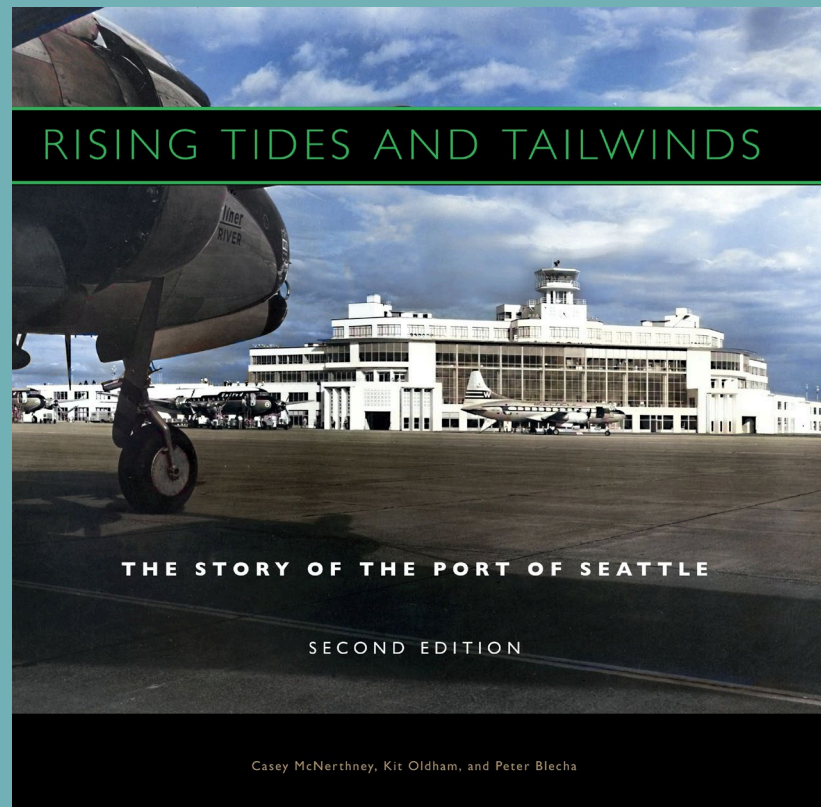
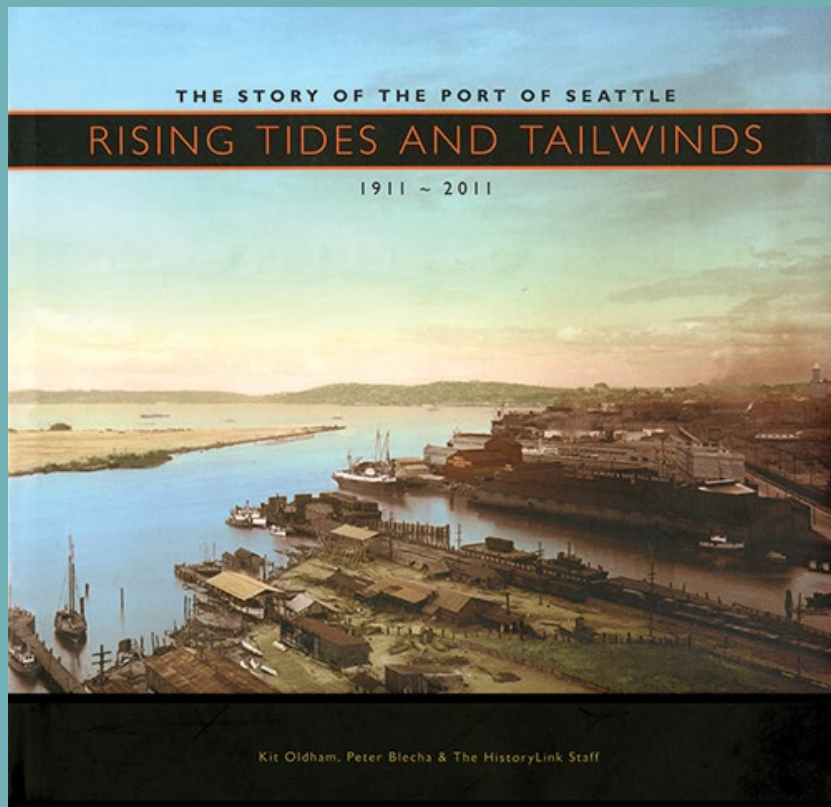
Public Port Districts and the Environment

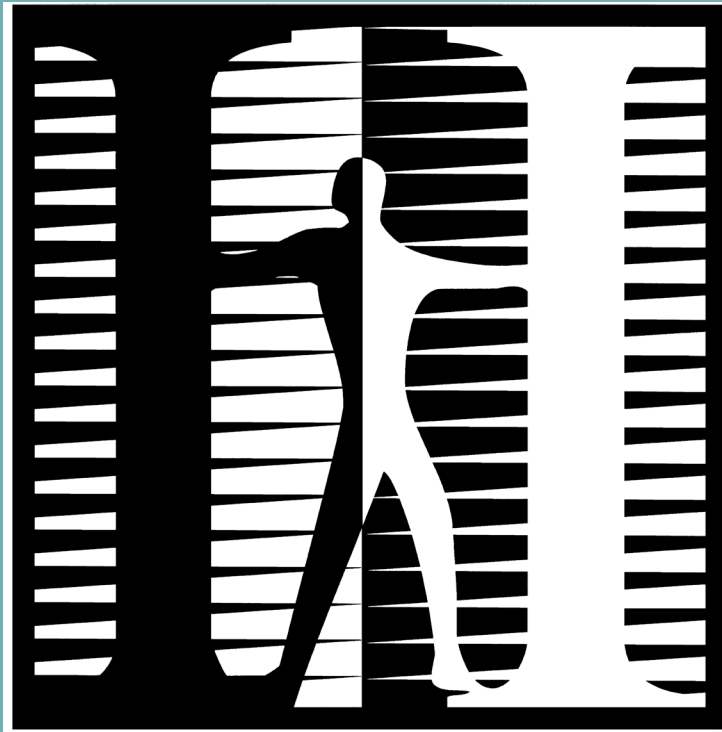
Public Port Districts in Washington: Origins

Public Port Districts: Promoting Economic Development

Washington Public Port Districts, Parts 1 & 2







HistoryLink



Share on your website, in your newsletters, on social media

#PortHistory

#TBT

#PublicPorts

#OTD

#TriviaTuesday

Visit us online!



Jennifer Ott
Executive Director
jennifer@historylink.org