

Engaging With CTE

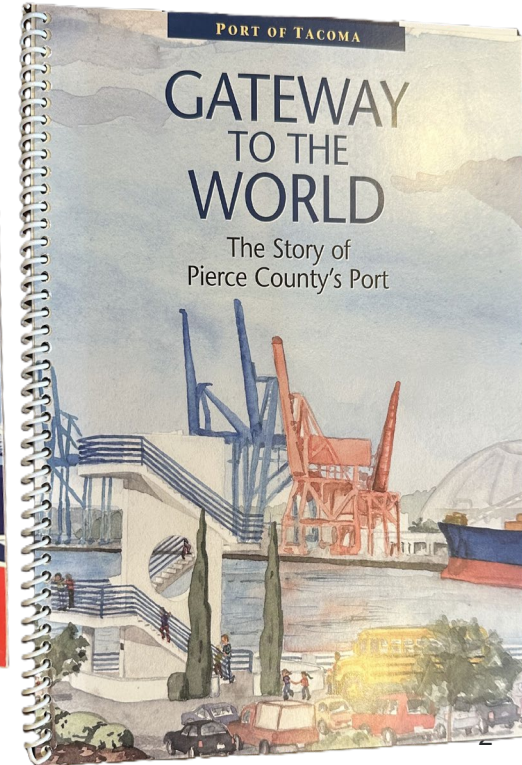
Name Leslie A. Barstow

Manager, Community Relations & Workforce Development

April 28, 2026



Elementary School Exposure



Elementary School Exposure



CTE Advisory Boards/Technical Colleges



IMPROVED!



AugmentedArc® Augmented Reality Welding System

951823

A highly realistic multiprocess welding simulation solution for classroom training. For beginner to advanced-level weld students, the AugmentedArc system simulates multiple welding processes, blending real-world and computer-generated images into a unique, augmented reality environment.

Select One

[Compare](#)

AugmentedArc® Augmented Reality Welding System - 951823

[?](#) Educators: considering this product for your lab? [Contact Us](#)

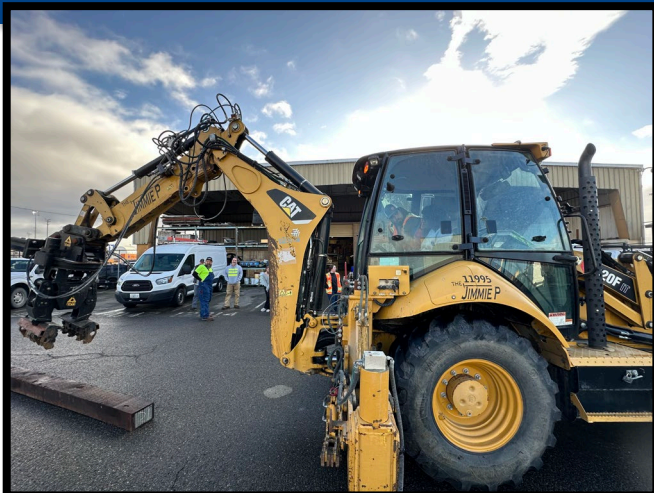
[page](#)



Career Fairs



High School STEAM Day Tours



Youth Marine Foundation/Sea Scouts



Workforce Contract/Internships/Paid Work Experiences



46 Participants



26 Unique Employers



11,979 Training Hours



\$23.18/h

Average Wage



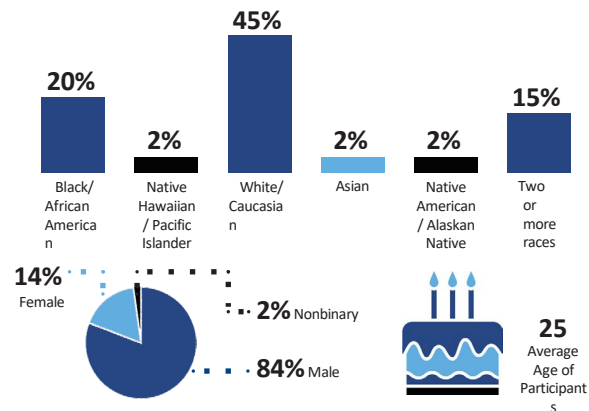
84.8% Completion Rate



37 Participants Employed

Since the program began... 80 people have been employed with 53 unique employers (stats from the first two years)

Participant Demographic Information



Port of Tacoma: New Maritime Center & Maritime 253 Maritime Skills Center

Artist's rendition of completed buildings



Port of Tacoma Maritime Center

Maritime 253



Buildings progress to date



Thank you!

Leslie Barstow

Manager, Community Relations &
Workforce Development

lbarstow@portoftacoma.com

