



MISSION

Maryhill Museum of Art ignites a journey of educational enrichment in the Columbia River Gorge by preserving and interpreting art and historic collections.





Sam Hill (1857–1931)



Loïe Fuller (1862–1928)



Queen Marie of Romania (1875–1938)



Alma de Bretteville Spreckels (1881–1968)



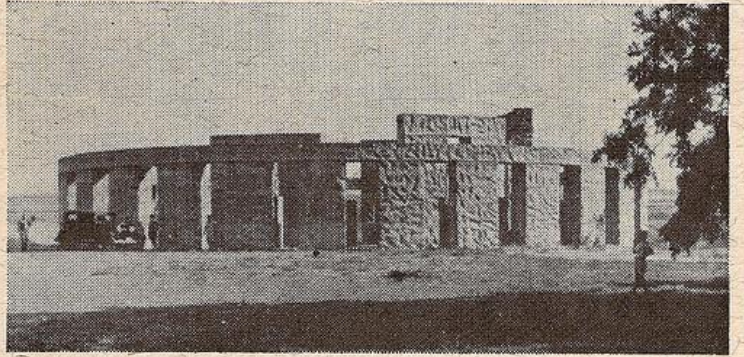
Sam Hill began building a Beaux- Arts mansion on his 5,300-acre Maryhill ranch in 1914. In 1917, Loïe Fuller convinced him to dedicate it “to a museum for the public good, and for the betterment of French art in the Far Northwest of America.”



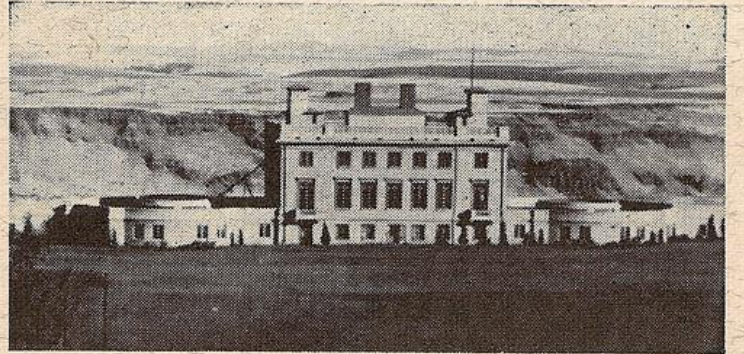
Maryhill Museum's Stonehenge Memorial was erected as the nation's first World War I memorial. It was dedicated in 1918 to the servicemen of Klickitat County, Washington, who died during the Great War.



In 1909, Sam Hill began construction of 10 miles of demonstration roads on his Maryhill property—all built at his own expense. The historic Maryhill Loops Road was the first macadam asphalt-paved road in the Pacific Northwest.



MARYHILL STONEHENGE



MARYHILL MUSEUM OF FINE ARTS

COMPLIMENTS OF

MARYHILL FERRY COMPANY

MARYHILL, WASHINGTON

MODERN, ALL-STEEL FERRY 8 CAR CAPACITY

24 HOUR SERVICE



MARYHILL FERRY

MARYHILL, WASHINGTON

PEASLEY - PHOTOS

CONNECTING LINK ON THE FAST U. S. HIGHWAY NO. 97 TO CALIFORNIA

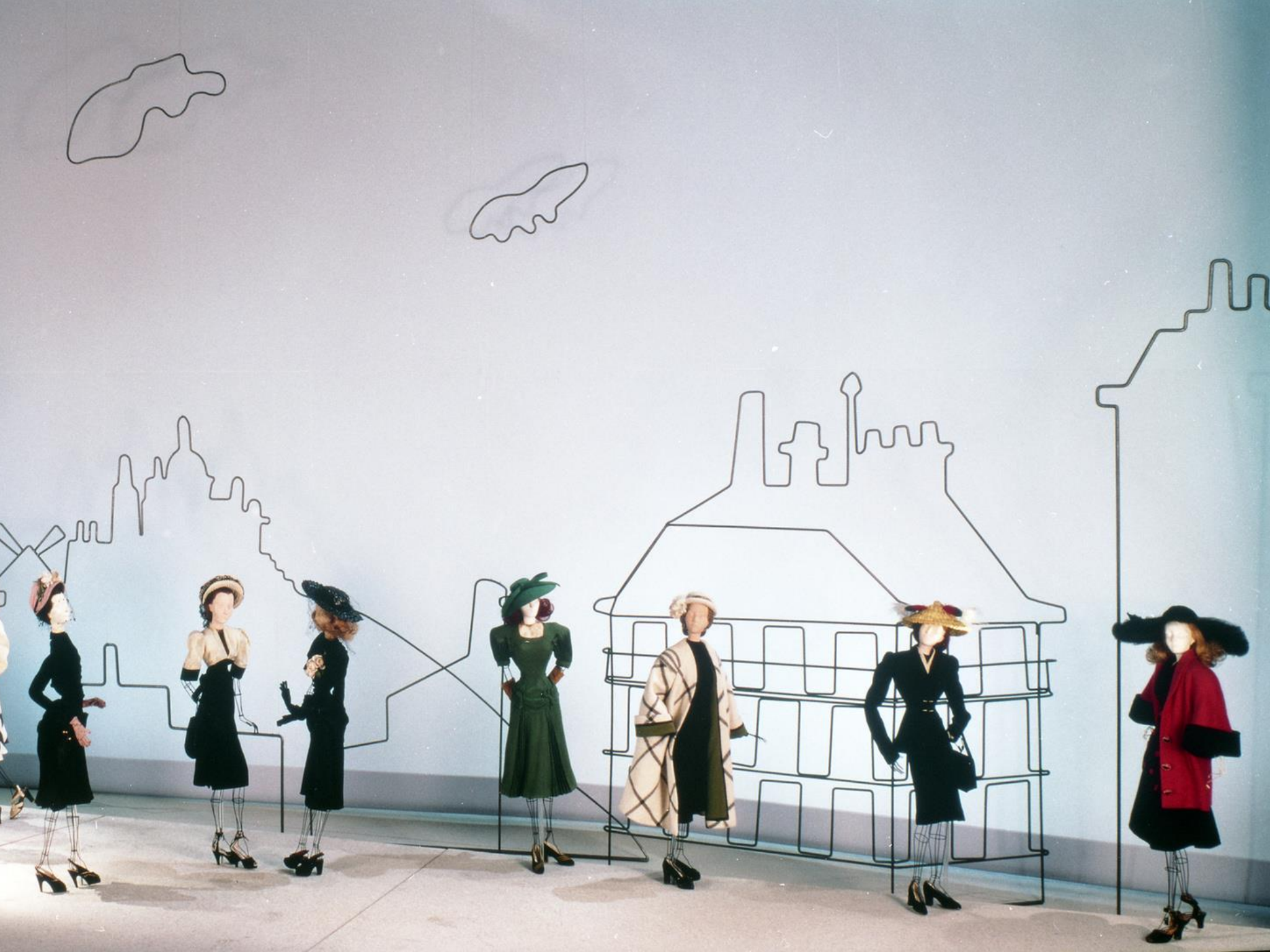








The Gates of Hell



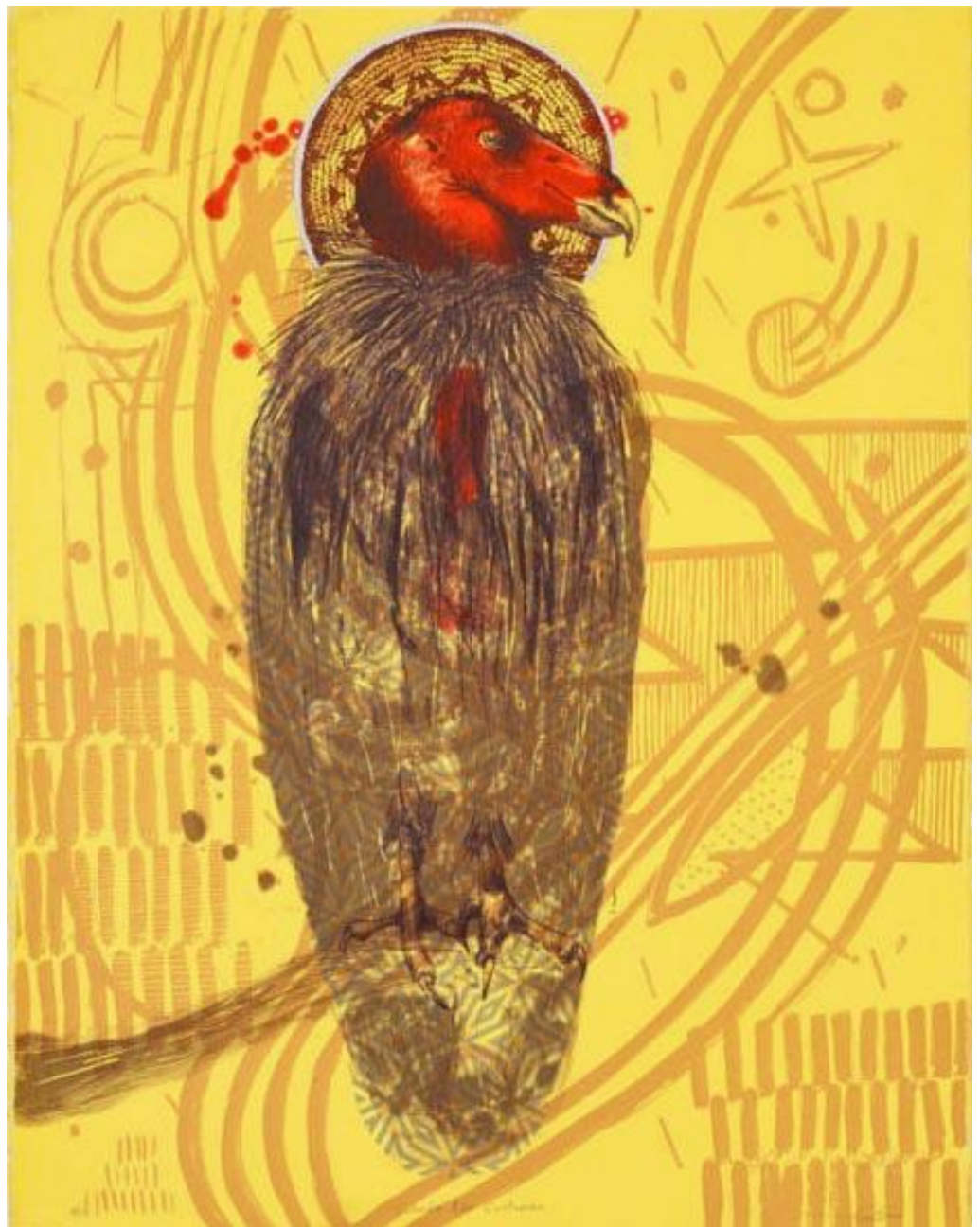




Jackie Larson Bread (Blackfeet, b. 1960), *Fish Wolf Robe Bag*, 2018, 20" tall



Maynard White Owl Lavadour (Cayuse/Nez Perce, b. 1960), *Tixaash/Toy Cradle*, 1998, 21" x 5½"



Marwin Begaye (Navajo [Diné], b. 1970) *Columbia River Custodian*, 2018, lithograph, ed.: 2/18, 28¼" x 22¼"



American Classical Realism

Robert Hale (c. 1893–1981) was one of the most prominent American classical realists. His training can be traced back to the French academic tradition. He studied at the School of the Museum of Fine Arts in Boston and the Académie Julian in Paris, but his work owes much to the work of David (1788–1844), Hippolyte-Paul Delacroix (1798–1856), and Jean-Léon Gérôme (French, 1824–1904). Gammell's teachers were William Sergeant Kendall (American, 1869–1941), and Boston artist and teacher from 1906–1911, and Boston artist and teacher from 1869–1941, who mentored him from 1911–1916.

Gammell was known for painting historical and mythological themes. During the 1920s, he painted a series of portraits of young women. That realization and other works of art became part of a series of paintings that became known as 'The Pictorial Sequence by Gammell' completed in 1956.

In 1950, the artist founded the American Classical Realism painting tradition with three or four students. He was a mentor to a number of young artists, and he gave lectures, taught, and supervised.

The expression 'Classical Realism' was first used by Gammell (1906–2009) who used it on his own atelier in 1961. The work of artists affiliated with the movement is characterized by other representational artists. Lack of interest in abstraction, despite being reluctant to apply a label.

In 1969, a group of artists, educators, and collectors formed the Society of Classical Realism to promote Western European academic and American classical realism. Several different periodicals and journals were published.

After 1943, the Maryhill Museum of Art in Maryhill, Oregon, housed Gammell and those within his circle. The museum now displays about 50 American Classical Realist paintings.

William McGregor Paxton (American, 1869–1941), *The Red Fan*, 1906, oil on canvas, 72" x 48"



STRATEGIC PRIORITIES 2022-26

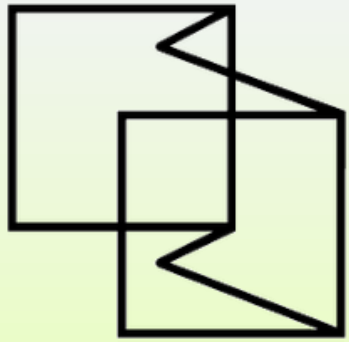
Deepen our educational programs

Renew relationships with Gorge communities

Improve our historic infrastructure

Secure our water right

Strengthen our financial sustainability



Impact

MUSEUM WEEK & EDUCATIONAL TOURS

avg **73%**
percentage of
4th grade
students
visiting a
museum for
the first time





Yakama Nation Basketweaving Community Workshops





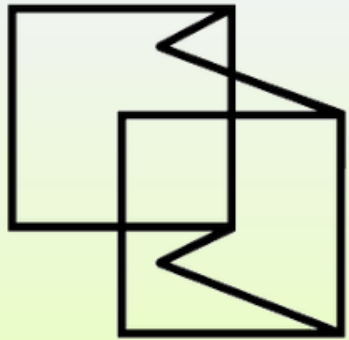
CAMPUS RENOVATION: SCULPTURE GARDEN

William
and
Catherine
Dickson
Sculpture
Park



HISTORIC STRUCTURE PRESERVATION





What's **NEW & NOW**

A.S.R. PRINCIPESA MARIA



46
EDIT. C. SFETEA,
BUCUREȘTI





Secunde
dne
santa
maria

a mater dei pietate precl
sima summi regis filia
mater gloriosissima. mi
sericordiarum consolatio
desolatorum. via erranti
um salus incesperanti
um. virgo ante partum. virgo
post partum. fons misericordie

The page features a highly decorative border with intricate floral and foliate patterns in blue, green, red, and gold. A central miniature depicts the Virgin Mary seated in a blue robe, holding the Christ Child on her lap. They are positioned in a room with a green and white checkered floor and blue architectural elements. To the right of the miniature, a large initial 'S' begins the text, which is written in a Gothic script.

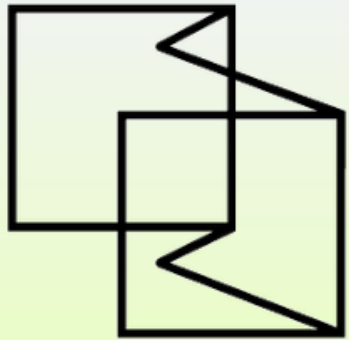




Princess Irene of Greece, Queen Marie of Romania, Princess of Helen of Greece, and Queen Maria of Yugoslavia, 1923







What's NEXT



**DEVELOPMENT OF NEW
FASHION EXHIBITIONS**

CAPITAL IMPROVEMENTS: STONEHENGE MEMORIAL MONUMENT



CAPITAL IMPROVEMENTS: WATER RIGHT DEVELOPMENT



OPERATING FINANCES

Income Sources

23-35% from annual gifts of money

- a. Memberships
- b. Individual & Foundation Gifts
- d. Government Grants
- e. Corporate Gifts
- f. Memorials & planned gifts

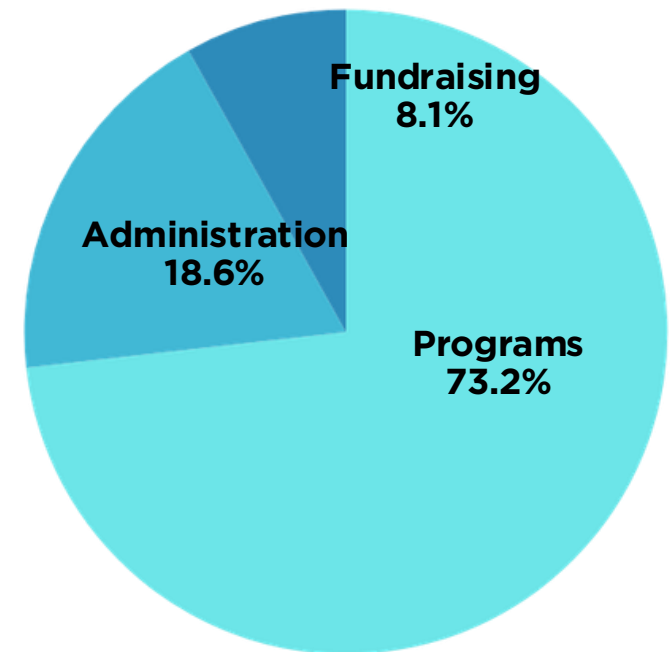
45-65% from earned revenues

- a. Admission and admission related income
- b. Renewable Energy, Venue Rentals, Ranch Leases

12-18% of from Released Funds

- a. Released Restricted Funds
- b. Maryhill Endowment

Functional Expenses



SEE

Pacific
Northwest Plein
Air in the
Columbia River
Gorge
(May 3-25)



DO

Solstice at
Maryhill
Stonehenge
(June 20-21)



JOIN

Centennial
Celebration
(September 19)



THANK
YOU!



Amy Behrens, Director & CEO
(509) 773-3733 x 102
amy@maryhillmuseum.org